



OGIO®
2024 | POWERSPORTS CATALOG

1 FAMILY. 2 CHAMPIONS. 1 BAG...

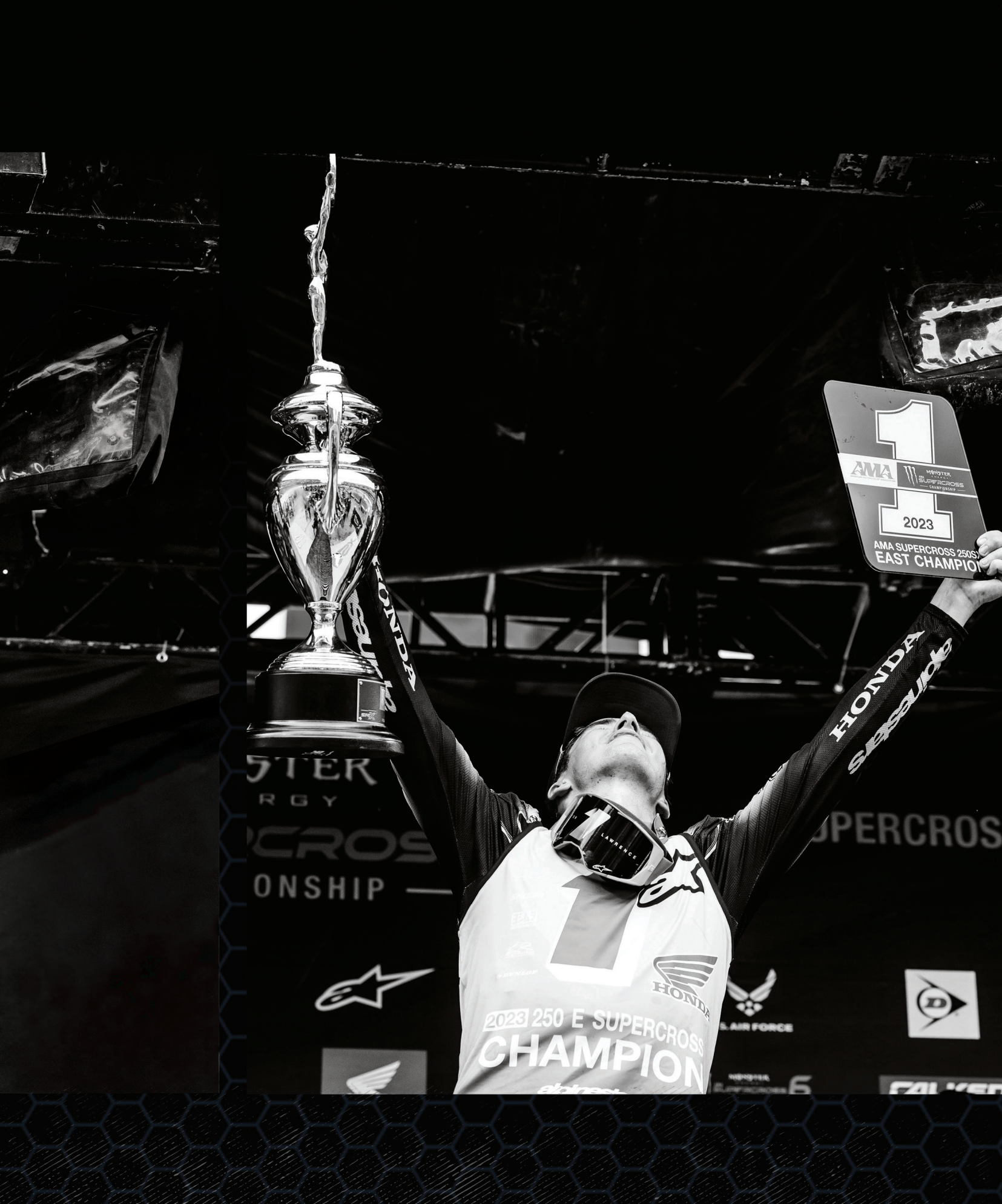
JETT LAWRENCE | 2023 250W SX CHAMPION

FACTORY HRC HONDA

HUNTER LAWRENCE | 2023 250E SX CHAMPION

FACTORY HRC HONDA





GEAR BAGS

- 8 | RIG T-3
- 10 | RIG 9800 PRO
- 12 | RIG 9800
- 14 | DOZER
- 16 | TRUCKER
- 17 | HAULER
- 18 | MX PRO BOOT BAG
- 18 | ATS CASE
- 19 | HEAD CASE
- 19 | MX GOGGLE BOX
- 19 | MX450 TOOL PACK

HYDRATION

- 22 | SAFARI 2L D3O®
- 23 | DAKAR 3L
- 24 | BAJA 2L
- 25 | ATLAS 3L
- 26 | HAMMERS 2L
- 27 | RIPPER 1.5L
- 28 | ERZBERG 1L
- 28 | FLIGHT VEST
- 29 | REPLACEMENT PARTS

STREET

- 32 | MACH 5 D3O®
- 34 | MACH 5
- 35 | MACH S
- 36 | MACH 3
- 37 | MACH 1
- 38 | MACH RAIN COVER
- 38 | RAZOR WAIST BAG
- 39 | RAZOR LEG BAG

ON BIKE

- 43 | M2 8-12L TANK BAG
- 43 | M1 8L TANK BAG
- 44 | S3 4-7L TANK BAG
- 44 | S2 4L TANK BAG
- 45 | S1 4L TANK BAG
- 45 | TANK BAG RINGS
- 46 | 21L & 14L TAIL BAG
- 47 | TAIL BAG HARNESS
- 47 | SADDLE BAGS 2.0
- 48 | TAIL BAG 2.0
- 49 | SUPERMINI TANKER 2.0
- 49 | HONCHO 2.0 ATV BAG

PACKS

- 52 | REV PACK
- 53 | ALL ELEMENTS AERO-D
- 54 | COVERT PACK
- 55 | DRIFTER PACK
- 56 | EXCELSIOR PACK
- 56 | 6L & 3L DRY SACK
- 57 | GRAVITY DUFFEL BAG

TRAVEL

- 60 | ONU-29
- 61 | ONU-22
- 62 | ONU-26
- 63 | ONU 4WD

ICON KEY:



HELMET



PROTECTIVE GEAR



BOOTS



GOGGLES



GLOVES



WATERPROOF



CELL PHONE



SUNGLASSES



TOOLS



HYDRATION READY



SHOES



LAPTOP SIZE



TABLET



AIR FLOW



EXPANDABLE



BACK PROTECTOR



Scan here
for product
installation &
info videos.



| DYLAN FERRANDIS

| GEAR BAGS





MALCOLM STEWART RIG 9800 PRO





GEAR BAGS

RIG T-3 | RIG 9800 PRO | RIG 9800 | DOZER | TRUCKER |



| black/red
801003.998



| silver/black
801003.999



| black/neon
801003.997



RIG T-3



The admiral of the OGIO Gear Bag collection, the Rig T-3 is destined to become an instant classic and must have equipment for any serious rider! This 3-in-1 gear bag comes complete with full featured/removable Head Case Helmet bag and removable full featured Boot Bag with washable liner. With adjustable cargo pockets, added under lid compartments for storage, a full changing mat, hideaway essential tool holder and perfect pocket placement to carry absolutely EVERYTHING – the Rig T-3 is indeed the best carry-all rider bag we have ever created!

STYLE: 5919580OG

- 3-in-1 bag features separate and removable **FULL FEATURED Head Case Helmet bag and MX Boot Bag**
- Extra wide lid opening for easy access to gear bags and under lid storage
- Helmet Case accessible via top panel opening
- Velcro® opening mesh panel for air flow
- SLED (Structural Load Equalizing Deck) System for increased durability and handling in any condition
- New changeable wheel set, with customizable wheel color options (purchased separately)
- Internal adjustable mesh dividers for custom organization
- Hideaway changing mat
- Multiple reinforced padded grab handles
- 3 under lid storage pockets for increased capacity and top slash zipper pocket
- Dual compression strap secure hold system
- iFOM (Integrated Foam) construction throughout for added protection and durability
- Small tool storage pack (included)

36.5" H x 17" W x 15.25" D / CM 92.5 H x 43 W x 38.5 D + 14.2 Lbs/6.4 Kg
8850 Cu.In/145 L (empty) + 600D poly, 420D nailhead dobby poly



| HAIKEN DEEGAN





GEAR BAGS

RIG T-3 | RIG 9800 PRO | RIG 9800 | DOZER | TRUCKER |



| sushi
801003.23



| black/red
801003.998



| silver/black
801003.999



| black/neon
801003.997



| fast times
801003.04



| blackout
801003.01

NEW
COLOR

| spitfire
801003.16



RIG 9800 PRO



The Rig 9800 gets a facelift and added features in the revamped Rig 9800 Pro. Featuring OGIO's renowned SLED, the Rig Pro gets an added MX boot bag and changeable wheel set as part of the new overall design.

- Includes MX Boot Bag
- New changeable wheel set, with customizable wheel color options (purchased separately)
- Internal tie-down straps to hold down boots, your clean clothes or other gear
- Upgraded heavy duty grab handles
- Additional top slash storage pocket
- ID window on the top of the bag
- SLED (Structural Load Equalizing Deck) System for increased durability in the harshest of conditions.
- Wide mouth LID opening for easy access
- Several multi-use under LID compartments for apparel and smaller gear
- iFOM (Integrated Foam) construction throughout for added protection and durability
- Telescopic pull handle

34 1/2" H x 16" W x 15 1/2" D / CM 86 H x 42 W x 38.5 D
13.4 Lbs/6.1 Kg (Empty), 14.8 Lbs/6.75 Kg (with Boot Bag)
7,620 Cu.In/125 L (Empty) + 600D poly, 420D dobby poly



| tropics
801003.08



| petrol
801003.22

NEW
COLOR



| blockade
801003.21

NEW
COLOR



| chaos
801003.20

NEW
COLOR



GEAR BAGS

RIG T-3 | RIG 9800 PRO | RIG 9800 | DOZER | TRUCKER |



| black
121001_03



| black/red
801003.998



| silver/black
801003.999

| black/neon
801003.997



| dark-static
5919316OG



| coyote
801000.02



| green
801000.04

RIG 9800



The Rig 9800 Travel Bag stands alone as the king of all gear bags. Its durability and impressive list of features are legendary and the reason the world's best riders have used it for almost 20 years. This flagship OGIO bag is the industry standard. Whether it's a trip to the track or a trek across the globe, grab the Rig for your next adventure.

- SLED (Structural Load Equalizing Deck) System for increased durability and handling in the harshest of conditions
- Wide mouth LID opening for easy access to all gear compartments
- Large main compartment with adjustable dividers and padded helmet chamber
- Several multi-use LID compartments for apparel and smaller gear
- iFOM (integrated foam) construction throughout for added gear protection
- Secure hold compression strap system
- Telescopic pull handle
- New changeable wheel set, with customizable wheel color options (purchased separately)

34"H x 16.5"W x 15.25"D / CM 86 H x 42 W x 39 D
14.2 Lbs/6.4 Kg + 7500 Cu.In/123 L
420D dobby poly, 420D diamond rip stop, 600D poly



| JUSTIN COOPER





GEAR BAGS

RIG T-3 | RIG 9800 PRO | RIG 9800 | DOZER | TRUCKER |



| black
801005.01





| TOM VIALLE

DOZER



Based on the original Rig 9900 design, the Dozer features a separate compartment for boots, a soft lined compartment for your helmet plus a large main compartment to house all your gear and keep it organized. Featuring a unique 3-wheel design for stability and control to easily roll over the toughest terrain.

- 3 large, separate compartments to keep gear organized
- iFom (Integrated Foam) construction throughout for added gear protection
- Easy clean eco-friendly PVC lined boot compartment
- 3-wheel design for stability and control
- Multiple grab handles for easy handling
- Telescopic pull handle

37"H x 17.75" W x 12.5" D / CM 94 H x 45 W x 37.75 D
10.75 Lbs/4.8kg + 8,200 Cu.In/134 L
600D poly



TRUCKER

Built tough from the bottom up, the Trucker Gear Bag features 4 large separate compartments for all your gear. On the road or in the dirt, the Trucker is full featured and super versatile.

- 4 large, separate compartments keep your gear clean and organized
- Special padded helmet compartment is accessible also from the outside of the bag
- Easy clean eco-friendly PVC-lined boot compartment
- Velcro® divider allows use of the entire bottom of the bag
- Top lid zipper pocket
- Reinforced bottom and all-terrain wheel set
- Large plastic grab handle helps keep bag upright
- Heavy-duty 900D fabric with eco-friendly PVC backing

33"H x 13"W x 15.75"D / CM 85 H x 34 W x 40 D)
10.7 Lbs/4.9 Kg + 6,710 Cu.In/110 L
900D poly, T420D dobby, PVC backing



| blockade
801001.12



| dark static
801001.02



| maui
801001.11



| woody
801001.07



| black
801001.01

HAULER

The heavy-duty Hauler gear bag features a large U-Shaped opening for easy access and dedicated side compartment for goggles or dirty items. Additional storage under the lid helps keep your gear organized and clean. The large padded shoulder harness makes for easy carrying.

STYLE: 801007.01

- Large main compartment stores loads of gear
- Velcro® divider system provides support and allows you to compartmentalize your gear when needed
- Under lid storage area maximizes space
- Detachable padded shoulder harness
- Internal pockets in main compartment for smaller items
- Grab handles can be worn as backpack straps when carrying lots of gear

32" L x 18" W x 16" D / CM 81.2 L x 45.7 W x 40.6 D
5.3 Lbs/2.4 Kg + 9,216 cu in/151 L
Heavy duty 600D fabric with eco-friendly PVC backing



| LEVI KITCHEN



MX PRO BOOT BAG

Featuring upgraded materials, padded carry handle, additional ventilation areas and several pockets, the MX Pro Boot Bag is packed with features to make sure that your boots get first class treatment.

STYLE: 801002.01

- Large size fits up to size 14 boots
- Upgraded padded grab handle
- Internal mesh storage pocket
- Zippered quick access back pocket
- Weather resistant rubberized PU bottom
- Ventilation areas allow for air flow through the bag

18"H x 10.5"W x 15"D / CM 45.7 H x 26.6 W x 38.1 D
1.75 Lbs/0.8 Kg
Heavy duty 600D fabric



ATS CASE

STYLE: 121015_02

- Molded EVA/PE 360° protective shell
- Adjustable padding thickness accommodates multiple helmet and neck brace types
- Compressed foam holds helmet and neck brace still within the case
- Adjustable goggle or visor storage holds up to 4 goggles or 3 goggles and action camera equipment

16.75"H x 11.25"W x 13.50"D / CM 42.5 H x 28.5 W x 34 D
2.5 Lbs/1.1 Kg + 2000 Cu.In/32.8 L
900D fabric with eco friendly PVC backing, PE tub



HEAD CASE

STYLE: 121009_36

- Oversized helmet bag fits all helmet brands and sizes with fins and without
- Integrated foam panels and additional fleece interior provides added protection
- Protective zipper teeth closure prevents scratches from zippers
- Easy access oversized external sleeve pocket for goggles, lenses, and tear offs
- Exterior zippered accessory pocket for valuables
- Durable reinforced bottom
- Concealed front organization panel

19"H x 13"W x 11"D / CM 48 H x 33 W x 28 D
1.6 Lbs/0.7 Kg + 2717 Cu.In/45 L
600D poly, 420D dobby poly



MX GOGGLE BOX

STYLE: 109025_36

- Deluxe goggle storage—fits up to 5 pairs
- Fleece lined interior dividers
- Lens pocket
- EVA foam compression molded top pocket for roll offs, tear offs and other accessories
- Interior organizer pockets
- Easy grab reinforced carry handle

6"H x 11"W x 16"L / CM 15 H x 28 W x 40.5 L
2 Lbs/0.9 Kg + 1056 Cu.In/17 L
Perforated leatherette, lycra-wrapped compression molded EVA



MX450 TOOL PACK

STYLE: 713102_36

- Deluxe front flip down tool organizer pouch
- Right side necessity pocket with water-resistant zipper
- Spare moto tube compartment
- Exterior D-rings for T-handles
- Hip foam padding for ultimate comfort
- Adjustable padded waist belt
- Rubberized backing holds pack in place

4"H x 26"W x 6"D / CM 10 H x 66 W x 15 D
1.4 Lbs/0.6 Kg + 624 Cu.In/10 L
840 dobby poly, 420D dobby poly



HYDRATION





SAFARI 2L D3O®



The Safari 2L hydration pack features a sewn-in D3O® back protector, ideal for tough off-road tracks. With an expandable front storage pocket for your helmet or extra gear, 2-liter bladder and multi-adjust harness system, the Safari is designed to keep you protected, hydrated and comfortable.

STYLE: 802001

- Equipped with a sewn in D3O® Level 2 back protector. D3O® protectors have been developed to be used for protection from blunt impact
- Dedicated Anti-Sloshing hydration bladder compartment with hook & loop secure strap for holding bladder in place and tube channel port
- Features a top fill closure and anti-slosh stabilizing handle for easy fill and cleaning
- Insulated Cooler Fabric lining that keeps liquid cold for 30% longer
- Large front compartment for storing extra gear and accessories
- Upper zippered felt-lined electronics pocket for protection
- Expandable front storage pocket for helmet or large gear
- Dual compression straps to keep items secure
- Two expandable side mesh pockets for quick access storage
- Ergonomic padded back with directional air flow
- Multi-Adjust harness system designed for easy maneuverability
- 70oz./2L bladder – Custom mPE film made in the USA, antimicrobial, BPA free, zero taste, and odor-free

16.25" H x 10" W x 5" D / CM 41 H x 25 W x 12.5 D

2.85 lbs/1.3kg (excludes bladder)

485 Cu.In/8 L (includes bladder)

150D mini honeycomb rip stop with TPE backing

& 420HD oxford nylon with PU backing



DAKAR 3L

Packed with 100 oz. bladder and loads of storage space, the Dakar 3L Hydration Pack delivers streamlined organization in one easy-to-carry pack.

STYLE: 122101_03

- Dedicated Anti-Sloshing hydration bladder compartment with hook & loop secure strap for holding bladder in place and tube channel port
- Features a top fill closure and anti-slosh stabilizing handle for easy fill and cleaning.
- Insulated Cooler Fabric lining that keeps liquid cold for 30% longer
- Large front compartment for storing extra gear and accessories
- Upper zippered felt-lined electronics pocket for security and protection
- Expandable front storage pocket with protective EVA molded armor and air ventilation for large gear
- One expandable and one zippered side mesh pocket for quick access
- Ergonomic padded back with directional air flow
- Multi-Adjust harness system designed for easy maneuverability and secure fit
- Web TECH feature safely secures excess webbing
- 100oz./3L bladder – Custom mPE film made in the USA, antimicrobial, BPA free, zero taste, and odor-free

17.5" H x 10" W x 8" D / CM 44.5 H x 25 W x 20 D

2.05 Lbs/0.9 Kg (excludes bladder) + 730 Cu.In/12 L (includes bladder)

150D mini honeycomb rip stop with TPE backing & 420HD oxford nylon with PU backing



BAJA 2L



The Baja 2L Hydration Pack features an expandable front storage pocket big enough to stow your helmet or any large gear. The 2-liter bladder and multi-adjust harness system will keep you hydrated and comfortable throughout even the toughest ride.

STYLE: 122102_03

- Dedicated Anti-Sloshing hydration bladder compartment with hook & loop secure strap for holding bladder in place and tube channel port
- Features a top fill closure and anti-slosh stabilizing handle for easy fill and cleaning
- Insulated Cooler Fabric lining that keeps liquid cold for 30% longer
- Large front compartment for storing extra gear and accessories
- Upper zippered felt-lined electronics pocket for protection
- Expandable front storage pocket for helmet or large gear
- Dual compression straps to keep items secure
- Two expandable side mesh pockets for quick access storage
- Ergonomic padded back with directional air flow
- Multi-Adjust harness system designed for easy maneuverability
- 70oz./2L bladder – Custom mPE film made in the USA, antimicrobial, BPA free, zero taste, and odor-free

16.25" H x 10" W x 5" D / CM 41 H x 25 W x 12.5 D

1.75 Lbs/0.8 Kg (excludes bladder)

485 Cu.In/8 L (includes bladder) + 150D mini honeycomb rip stop with TPE backing & 420HD oxford nylon with PU backing



| TYLER BEREMAN



ATLAS 3L

Hit the trail in style with the ATLAS 3L Hydration Pack. The sleek design and ergonomic fit will make the Atlas your new favorite bag.

STYLE: 122103_03

- Dedicated Anti-Sloshing hydration bladder compartment with hook & loop secure strap for holding bladder in place and tube channel port
- Insulated Cooler Fabric lining that keeps liquid cold for 30% longer
- Front compartment with mesh ventilation for accessories
- Ergonomic padded back with directional air flow
- Multi-Adjust harness system designed for easy maneuverability. Built for precision fit of all body types
- 100oz./3L bladder – Custom mPE film made in the USA, antimicrobial, BPA free, zero taste, and odor-free
- Features a top fill closure and anti-slosh stabilizing handle for easy fill and cleaning

17.25" H x 9.5" W x 3.5" D / CM 43.5 H x 24 W x 8.5 D

1.35 Lbs./0.6 Kg (excludes bladder)

305 Cu.In/5 L (includes bladder)

150D mini honeycomb rip stop with TPE backing &

420HD oxford nylon with PU backing



HAMMERS 2L

The Hammers 2L hydration pack features an ergonomic fit and streamlined design. A great pack for a quick trail ride or hike.

STYLE: 802002

- Dedicated Anti-Sloshing hydration bladder compartment with hook & loop secure strap for holding bladder in place and tube channel port
- Insulated Cooler Fabric lining that keeps liquid cold for 30% longer
- Front compartment with mesh ventilation for accessories
- Ergonomic padded back with directional air flow
- Multi-Adjust harness system designed for easy maneuverability. Built for precision fit of all body types
- 100oz./3L bladder – Custom mPE film made in the USA, antimicrobial, BPA free, zero taste, and odor-free
- Features a top fill closure and anti-slosh stabilizing handle for easy fill and cleaning

16.75" H x 9.5" W x 4" D / CM 42.5 H x 24 W x 10 D
1.3 Lbs. / 0.6 Kg (excludes bladder)
300 Cu.In / 4.9 L (includes bladder)
150D mini honeycomb rip stop with TPE backing &
420HD oxford nylon with PU backing



RIPPER 1.5L LUMBAR

Built to be worn across the back, the Ripper leaves your chest and shoulder area unencumbered. The 1.5L bladder size is great for all types of rides.

STYLE: 802003

- Dedicated Anti-Sloshing hydration bladder compartment with hook & loop secure strap for holding bladder in place and tube channel port
- Features a top fill closure and anti-slosh stabilizing handle for easy fill and cleaning
- Tube clip on bag body and OGIO retainer clip on hydration tube
- Insulated Cooler Fabric lining that keeps liquid cold for 30% longer
- 2 side pockets for small item storage
- Front storage pocket for larger items
- Bungee cord front area great for lightweight clothes and jackets
- Back panel made with EVA foam and mesh backing
- 50oz./1.5L bladder – Custom mPE film made in the USA, antimicrobial, BPA free, zero taste, and odor-free

7.5" H x 10" W x 4.5" D / CM 19 H x 25 W x 11 D

335 Cu.In/5.5 L (includes bladder)

150D mini honeycomb rip stop with

PU 3x backing



ERZBERG 1L

Ride with your hydration needs securely strapped to your back with the Erzberg 1L Hydration Pack. No matter how many twists, turns or jumps the trail you ride has, this hydration pack stays put.

STYLE: 122104_03

- Dedicated Anti-Sloshing hydration bladder compartment with hook & loop secure strap for holding bladder in place and tube channel port
- Insulated Cooler Fabric lining that keeps liquid cold for 30% longer
- Front zipper quick access pocket
- Quick cooling air mesh back panel
- Multi-Adjust harness system designed for easy maneuverability
- Built for precision fit of all body types. Stays secure to the body
- 35oz./1L bladder – Custom mPE film made in the USA, antimicrobial, BPA free, zero taste, and odor-free
- Features a top fill closure fill and cleaning

11" H x 9.5" W x 1" D / CM 28 H x 24 W x 2.5 D

0.9 Lbs/0.4 Kg (excludes bladder)

185 Cu.In/3 L (includes bladder)

150D mini honeycomb rip stop with TPE backing & 420HD oxford nylon with PU backing



FLIGHT VEST

STYLE: 108024_36

- The ultimate utility vest with built-in hydration
- 70 oz. reservoir bladder and tube system included
- Tool organizer pockets and sleeves
- Goggle and lens pockets
- Back tool storage pockets
- Several multi-use pockets
- Dual side expansion buckles
- Zippered chest pocket
- Multiple adjustment points for custom fit

24"H x 21"W x 4"D

CM 61 H x 53 W x 10 D

2.75 Lbs/1.2 Kg

400D nylon, 420D dobby poly



RESERVOIR BAGS

- Custom mPE film made in the USA
- Slide lock opening with large opening accommodates ice cubes and easy cleaning after use
- BPA-free polyethylene film is protected by Microban® antimicrobial technology
- Hydration Reservoir utilizes radio frequency welded seam technology on seams and exit port to ensure a strong leak-proof bond
- Angled easy flow bite valve provides a constant flow-rate
- TPU tubing is odor free and taste free
- Quick release tube connector

3.0L/100oz	STYLE: 122107_113
2.0L/70oz	STYLE: 122106_113
1.5L/50oz	STYLE: 802100
1.0L/35oz	STYLE: 122105_113



| 1.0 L



| 1.5 L



| 2.0 L



| 3.0 L

THERMAL CONTROL KIT

STYLE: 802004

- Dual-layered tube cover keeps liquids at desired temperature
- Tube includes OGIO retainer clip and bite valve cover
- Plug and play with all OGIO bladders for year-round use



BLADDER BITE VALVE

Angled easy flow bite valve provides a constant flow-rate. Soft-touch valve for easier drinking. Drip-free, odor-free and taste free.

STYLE: 5917001OG

- FDA/NSF approved, medical-grade silicon mouthpiece



| STREET





If you've ever ridden with a typical backpack, you know that loose fabric, hanging straps, and jangling metal zippers are a recipe for disaster. Regular packs can become a virtual tasmanian devil strapped to your back, violently thrashing, flapping, and clawing at you, causing massive amounts of wind drag. The *No Drag* Mach Series is constructed from our "Single Shot" high grade molded exterior and a unique shoulder gasket that conforms to your body helping to reduce wind drag. This, along with unparalleled storage and organization makes the Mach series the only way to travel on two wheels.



MACH 5 D30®



The Mach 5 with a D30® back protector sewn in to the back panel is our first street riders pack with incorporated advanced back protection. The Mach 5 D30® sports all the same features of the Mach 5, making it the most fully outfitted Mach bag ever built.

STYLE: 803010

- Equipped with a sewn in D30® Level 2 back protector. D30® protectors have been developed to be used for protection from blunt impact
- Streamlined molded exterior is water-resistant and will not deform from wind shear
- Shoulder gasket conforms to body and increases aerodynamics
- Bolstered back foam profile increases air ventilation
- 360-degree reflective logo and safety piping
- Removable fleece-lined hip accessory pouch
- Off center removable hip belt won't scratch gas tank
- Large main compartment with adjustable load divider and multiple interior storage compartments
- Deluxe organizer panel with zippered security pocket and stretch mesh dividers
- Dedicated stretch mesh shoe storage for the commuting professional
- Padded interior helmet visor sleeve-shaped
- U-shaped zippered expansion gusset increases storage volume
- Ergonomic, padded and fully adjustable riding specific shoulder straps with quick release exit buckle
- Concealed aerodynamic carry handle
- Fully adjustable and removable no slip sternum strap
- Integrated removable helmet carry strap
- Interior padded laptop sleeve with elastic closure fits most 15" laptops
- Padded iPad/tablet/e-reader sleeve
- Hydration ready

(Expanded) High visibility liner 20.5"H x 14.5"W x 9"D / CM 52 H x 36.5 W x 22.5D
4.4 Lbs/2 Kg + 1350 Cu.In/22.1 L (Unexpanded) + 1475 Cu.In/24.17 L (Expanded)
carbon weave PU shell, 840D Jr. ballistic nylon, 420D poly



MACH 5



The Mach 5 Motorcycle Backpack with *No Drag Technology* is the most comfortable, functional and aerodynamic riding pack on the market. The removable fleece-lined hip accessory pouch provides extra carry room, and the large main compartment features adjustable load dividers and a deluxe organizer panel with stretch mesh divider. It also includes a padded interior helmet visor sleeve, and an U-shaped expansion gusset to increase carrying volume. This fully-loaded Mach comes equipped with a laptop sleeve and dedicated shoe storage all within the most ergonomic design.

STYLE: 123006_36

- Streamlined molded exterior is water-resistant and will not deform from wind shear
- Shoulder gasket conforms to body and increases aerodynamics
- Bolstered back foam profile increases air ventilation
- Soft neck shoulder straps increase comfort while riding and will not scratch helmet exterior
- 360-degree reflective logo and safety piping
- Removable fleece-lined hip accessory pouch
- Off center removable hip belt won't scratch gas tank
- Large main compartment with adjustable load divider and multiple interior storage compartments
- Deluxe organizer panel with zippered security pocket and stretch mesh dividers
- Dedicated stretch mesh shoe storage for the commuting professional
- Padded interior helmet visor sleeve-shaped
- U-shaped zippered expansion gusset increases storage volume
- Ergonomic, padded and fully adjustable riding specific shoulder straps with quick release exit buckle
- Concealed aerodynamic carry handle
- Fully adjustable and removable no slip sternum strap
- Integrated removable helmet carry strap
- Interior padded laptop sleeve with elastic closure fits most 15" laptops
- Padded iPad/tablet/e-reader sleeve
- Hydration ready (fits OGIO 2L replacement bladder)



(Expanded) High visibility liner 20.5"H x 14.5"W x 9"D / CM 52 H x 36.5 W x 22.5D 3.5 Lbs/1.6 Kg
1350 Cu.In/22.1 L (Unexpanded) + 1475 Cu.In/24.17 L (Expanded) + carbon weave PU shell, 840D Jr. ballistic nylon, 420D poly



MACH S



The fully loaded Mach S is a (15%) smaller version of the best selling OGIO Mach 5 and gives riders another option of a full-featured bag with *No Drag Technology*. The U-shaped expansion gusset increases storage capacity and the large main compartment features adjustable load dividers and deluxe organizer panel. With most all of the same features of the Mach 5, the Mach S packs a big punch.

STYLE: 5919330OG

- Streamlined single shot molded exterior is water-resistant and will not deform from wind shear
- Shoulder gasket conforms to body and increases aerodynamics
- Bolstered back foam profile increases air ventilation
- Soft neck shoulder straps increase comfort while riding and will not scratch helmet exterior
- 360-degree reflective logo and safety piping
- Removable fleece-lined hip accessory pouch
- Off-center removable hip belt won't scratch gas tank
- Large main compartment with adjustable load divider and multiple interior storage compartments
- U-shaped zippered expansion gusset increases storage volume
- Concealed aerodynamic carry handle
- Fully adjustable and removable no slip sternum strap
- Integrated removable helmet carry strap
- Interior padded laptop sleeve with elastic closure fits most 13" laptops
- Hydration ready (fits OGIO 2L replacement bladder)

18"H x 12.5"W x 8.5"D / CM 45.5 H x 31.5 W x 21.5 D

2.75 Lbs/1.25 Kg + 1100 Cu.In/18 L

carbon weave PU shell, 840D Jr. ballistic nylon



MACH 3



The Mach 3 Backpack with *No Drag Technology* features sleeves for your shoes, a removable helmet carry strap, and padded interior. The no-slip sternum strap is adjustable and removable. Carry all your valuables in style and in safety with the OGIO Mach 3 Backpack.

STYLE: 123007_36

- Streamlined single shot molded exterior is water-resistant and will not deform from wind shear
- Shoulder gasket conforms to body and increases aerodynamics
- Bolstered back foam profile increases air ventilation
- Soft neck shoulder straps increase comfort while riding and will not scratch helmet exterior
- 360-degree reflective logo
- Off center removable hip belt won't scratch gas tank
- Zippered fleece lined personal electronics/ valuables pocket
- Large main compartment with deluxe organizer panel and zippered security pocket
- Dedicated stretch mesh shoe storage for the commuting professional
- Concealed aerodynamic carry handle
- Integrated removable helmet carry strap
- Interior padded laptop sleeve with elastic closure fits most 15" laptops
- Padded iPad/tablet/e-reader sleeve
- Hydration ready (fits OGIO 2L replacement bladder)

19"H x 12.5"W x 6.5"D / 48 H x 31.5 W x 16.5 D + 2.7 Lbs / 1.22 Kg
1350 Cu.In/22.1 L + PU shell, 450D dobby poly, 420D poly



MACH 1



The Mach 1 Backpack with *No Drag Technology* is true to its name, with a streamlined single shot molded exterior that won't deform from wind shear. The shoulder gasket conforms perfectly to your body, increasing your aerodynamics. It has a large main compartment with interior storage – even an organizer panel to keep it all in place.

STYLE: 123008_36

- Streamlined single shot molded exterior is water-resistant and will not deform from wind shear
- Shoulder gasket conforms to body and increases aerodynamics
- Removable off center hip belt won't scratch gas tank
- Large main compartment with interior organizer panel
- Ergonomic, padded and fully adjustable riding specific shoulder straps
- Concealed aerodynamic carry handle
- Fully adjustable and removable no slip sternum strap
- Interior padded laptop sleeve with elastic closure fits most 15" laptops
- Padded iPad/tablet/e-reader sleeve
- Hydration ready (fits OGIO 2L replacement bladder)

19"H x 12.5"W x 6.5"D / CM 48 H x 31.5 W x 16.5 D + 2 Lbs/0.91 Kg
1350Cu.In/22.1 L + PU shell, 600D poly, 420D poly, 420D dobby poly



MACH RAIN COVER



STYLE: 122014_205

- High Viz Orange and reflective logo
- Designed to fit Mach 5, Mach 3 and Mach 1 bags
- Velcro® brand fastener straps secure rain cover to shoulder harness
- Elastic binding securely cinches around pack for a snug fit

1 Lbs/0.45 Kg + 210 denier polyester oxford with waterproof PU coating

| high viz



RAZOR WAIST BAG



Featuring a new water-resistant front panel, our new molded waist and leg bags offer different solutions to carrying your essential items. Designed for comfort and convenience, both bags have a water-resistant zipper, an interior mesh storage pocket and a padded air flow back panel.

STYLE: 5919581OG

- Features a new water-resistant, EVA molded front panel
- Water-resistant zipper
- Main storage area includes inside zippered mesh storage pocket
- Great for carrying everyday essentials (wallet, keys, phone, etc.)

6.25"H x 14.75"W x 3.5"D / CM 15.5 H x 37.5 W x 8.5 D
0.5 Lbs/0.21 Kg + 100 Cu.In/1.6 L
150D mini honeycomb ripstop with TPE backing,
420D oxford nylon with PU backing



RAZOR LEG BAG



STYLE: 5919574OG

- Features a new water-resistant, EVA molded front panel
- Water-resistant zipper
- Main storage area includes inside zippered mesh storage pocket
- Great for carrying everyday essentials (wallet, keys, phone, etc.)

11"H x 6.5"W x 3.1"D / CM 28 H x 16.5 W x 7.5 D
0.5 Lbs/0.21 Kg + 79 Cu.In/1.3 L
150D mini honeycomb ripstop with TPE backing,
420D oxford nylon with PU backing



| ON BIKE



OGIO TANK BAG COLLECTION

In the initial design and development phase of the new OGIO Tank Bag collection, the one thing we didn't want was a "me too" mounting system. We asked ourselves, "Who should we collaborate with for our new line of tank bags?" The list was just one name, National Products Inc (NPI), manufacturer of RAM® Mounts. RAM® is widely recognized as the industry leader in mobile mounting solutions, providing the most innovative and durable designs in the marketplace. The collaborative result encompasses a patented and patent-pending mounting system that is easy to install, easy to use and both elegant and simple in design. All RAM® mounting bases and tank bag rings manufactured for OGIO are Made in the USA at NPI's facility in Seattle, Washington.

World Leader In Mounting Systems + World Leader In Powersports Bags = World Class Products





M2 EXPANDABLE 8-12L TANK BAG

The M2 is an 8L tank bag with a 2.5" expansion joint that allows the bag to expand and store up to 12L of volume. Made from single shot molded EVA with Carbon Fiber PU film, this bag is water resistant, features a see-through phone window, power cord port, internal removable storage pouch and shoulder strap. Extremely versatile, this bag is both a daily and travel workhorse.

STYLE: 803011

- Single shot molded EVA top/bottom which will not deform from wind shear with outer layer of PU film providing a water-resistant barrier
- Both top and base feature carbon fiber weave graphics
- Quick release pull strap for fast removal
- Touch sensitive window on top of bag allows for phone and map usage
- Reflective piping and graphics for increased visibility in low light
- 2.5" expansion joint increases storage volume
- Removable Velcro® backed Storage Pouch
- Quick access grab handle
- Removable shoulder strap for easy carrying off bike
- Full cover, touch sensitive rain cover features a shock cord with cord lock for tight fit and secure snap for added safety

Dimensions (Expanded) 8.75" L x 14.25" H x 7.5" W / CM 22.2 L x 36 H x 19 W
Weight 2.55 lbs / 1.15kg + 488 Cu.In/8L (Not Expanded) 732 Cu.In/12L (Expanded)
600D poly, carbon weave EVA molded top and base with 600D poly expansion joint



M1 8L TANK BAG

The M1 tank bag is a fixed 8L volume tank bag. The top is made from single shot molded EVA with Carbon Fiber PU film and the bottom of a single shot molded EVA with matte finish PU film. This bag is water resistant, features a see-through phone window, power cord port, internal removable storage pouch and shoulder strap. A great bag featuring ample storage for everyday use.

STYLE: 803012

- Single shot molded EVA top/bottom which will not deform from wind shear with outer layer of PU film providing a water-resistant barrier
- The top features carbon fiber weave graphics, the bottom a matte black finish
- Quick release pull strap for fast removal
- Touch sensitive window on top of bag allows for phone and map usage
- Reflective piping and graphics for increased visibility in low light
- Removable Velcro® backed Storage Pouch
- Quick access grab handle
- Removable shoulder strap for easy carrying off bike
- Full cover, touch sensitive rain cover features a shock cord with cord lock for tight fit and secure snap for added safety

8.75" L x 11.75" H x 7.5" W / CM 22.2 L x 29.8 H x 19 W
2.25 lbs / 1 kg + 488 Cu.In/8L
600D poly, carbon weave EVA molded top and matte finish PU molded base



S3 EXPANDABLE 4-7L TANK BAG

The S3 is a 4L tank bag with a 2.5" expansion joint that allows the bag to expand and store up to 7L of volume. Made from single shot molded EVA with Carbon Fiber PU film, this bag is water resistant, features a see-through phone window, power cord port, internal removable storage pouch and shoulder strap. A flexible bag for the daily commute.

STYLE: 803013

- Single shot molded EVA top/bottom which will not deform from wind shear with outer layer of PU film providing a water-resistant barrier
- Both top and base feature carbon fiber weave graphics
- Quick release pull strap for fast removal
- Touch sensitive window on top of bag allows for phone and map usage
- Reflective piping and graphics for increased visibility in low light
- 2.5" expansion joint increases storage volume
- Removable Velcro® backed Storage Pouch
- Quick access grab handle
- Removable shoulder strap for easy carrying off bike
- Full cover, touch sensitive rain cover features a shock cord with cord lock for tight fit and secure snap for added safety

Dimensions (Expanded) 8.75" L x 10.25" H x 7.75" W / CM 22.2 L x 26 H x 19.6 W
1.75 lbs / 0.8 kg + 244 Cu.In/4L (Not Expanded) + 427 Cu.In/7L (Expanded)
600D poly, carbon weave EVA molded top and base with 600D poly expansion joint



S2 4L TANK BAG

The S2 is a fixed 4L tank bag with a top made from single shot molded EVA with Carbon Fiber PU film and the bottom of a single shot molded EVA with matte finish PU film. This bag is water resistant, features a see-through phone window, power cord port, internal removable storage pouch and shoulder strap. A great bag for everyday use, the S2 is packed with features to make carrying small items convenient.

STYLE: 803014

- Single shot molded EVA top/bottom which will not deform from wind shear with outer layer of PU film providing a water-resistant barrier
- The top features carbon fiber weave graphics, the bottom a matte black finish
- Quick release pull strap for fast removal
- Touch sensitive window on top of bag allows for phone and map usage
- Reflective piping and graphics for increased visibility in low light
- Removable Velcro® backed Storage Pouch
- Quick access grab handle
- Removable shoulder strap for easy carrying off bike
- Full cover, touch sensitive rain cover features a shock cord with cord lock for tight fit and secure snap for added safety

8.75" L x 7.75" H x 7.75" W / CM 22.2 L x 19.6 H x 19.6 W + 1.65 lbs / 0.75kg
244 Cu.In/4L + 600D poly, carbon weave EVA molded top and matte finish PU molded base



S1 4L TANK BAG

The S1 is a fixed 4L tank bag with a 600D Polyester top and features a bottom made of a single shot mold with 600D Polyester cover. Underlid storage and removable shoulder strap make this bag a perfect choice for packing your necessities.

STYLE: 803015

- Single shot, 600D Poly covered EVA molded bottom is water resistant and will not deform from wind shear
- Quick release pull strap for fast removal
- Reflective graphics for increased visibility in low light
- Quick access grab handle
- Removable shoulder strap for easy carrying off bike

8.75" L x 7.75" H x 7.75" W / CM 22.2 L x 19.6 H x 19.6 W
.45 lbs / 0.65kg + 244 Cu.In/4L + 600D poly top, 600D poly covered EVA molded base



OGIO TANK BAG RINGS

OGIO tank bag rings are made in the USA by collab partner RAM™ MOUNTS®. Engineered to fit most major motorcycle brands, OGIO tank bag rings are designed to install easily and maintain their shape for years of on-off use. RAM™, a global leader in mounting systems, produces OGIO tank bag rings at their Seattle, WA manufacturing facility.

OR1 Tank Ring (Fits most BMW/Ducati/KTM)*
STYLE: 803901

OR2 Tank Ring (Fits most Triumph/Aprilia/ MV Augusta)*
STYLE: 803902

OR3 Tank Ring (Fits most Kawasaki)*
STYLE: 803903

OR4 Tank Ring (Fits most Suzuki)*
STYLE: 803904

OR5 Tank Ring (Fits most Yamaha)*
STYLE: 803905

OR6 Tank Ring (Fits most Honda Africa Twin)*
STYLE: 803906

*Please see the fitment guide at ogiopowersports.com/collections/street

| OR1



Scan QR code
for a complete
list of fitment
makes and
models!

TB1 14L TAIL BAG & TB2 21L TAIL BAG



The TB1 is a 14L Tail Bag that expands to 18L for added volume. The TB2 is a 21L Tail Bag with a 3" expansion joint that allows the bag to expand and store up to 28L of volume.

The Molded EVA with Carbon Fiber PU film provides structure and support while providing water resistance from the elements. The unique design is low-profile and provides an internal storage pocket, waterproof rolltop liner and carry strap. The RAM® EZY-Mount™ partnership with OGIO created a patent pending system that makes it easy to install, easy to use and easy to take-off when the ride is over.

TB1 14L STYLE: 803016

TB2 21L STYLE: 803017

- Molded EVA Top/Bottom will not deform from wind shear and outer layer of PU film provides a durable water-resistant barrier
- Quick release pull strap for fast removal
- Reflective piping and side graphics for increased visibility in low light conditions
- 3" expansion joint increases storage volume
- Removable Velcro® backed storage pouch
- Quick access grab handle and carry strap make egress from bike easier
- Internal waterproof rolltop liner for protecting electronics and keeping gear dry in extreme weather conditions
- OGIO Tail Bag Harness included
- Rain cover features a shock cord with cord lock for tight fit

TB1

14L = 11.5" L x 8.6" W x 8.5" H / CM 29.2 L x 22 W x 21.6 H

840 cu in./13.7L

18L Expanded = 11.5" L x 8.6" W x 11.5" H

CM 29.2 L x 22 W x 29.2 H + 1137 cu in./18.5L

2.9 lbs/1.3 Kg

600D poly, carbon weave EVA molded top and base with

600D poly expansion joint

TB2

21L = 14" L x 10.75" W x 8.5" H / CM 35.5 L x 27.3 W x 21.6 H

1279 cu in./21L

28L Expanded = 14" L x 10.75" W x 11.5" H

CM 35.5 L x 27.3 W x 29.2 H + 1730 cu in./28.3L

2.3 lbs/1.05 Kg

600D poly, carbon weave EVA

molded top and base with 600D

poly expansion joint



TAIL BAG HARNESS SYSTEM

New OGIO universal mounting system has 360-degree swivel cams that allow the Harness to fit any angle on your bike. The EVA molded mount is structured to provide a stable platform for an OGIO/RAM® EZY-Mount™ product to lock in place providing storage for your gear.

STYLE: 803018

- RAM® EZY-Mount™ mounting system with OGIO ring included allows for stable platform to mount an OGIO Tank or Tail Bag
- 2mm embossed SBR Neoprene protects the bottom of the harness from rubbing or scratching your bike
- 360-degree swivel cams allow straps to be cinched at the correct angle for your bike and cinch loop ends make strapping to your frame or rack simple

10.75" L x 9.0" W x 1.15" H / CM 27.3 L x 22.9 W x 3.0 H
1.1 Lbs/0.5 Kg



SADDLE BAGS 2.0



Designed to be your ideal travel companion, the universal mount OGIO Saddle Bags feature expandable main compartments and integrated rain hoods. The matte black finish and sleek design look great on any bike.

STYLE: 803003

- Deluxe dual main compartments with wide U-shaped openings
- Dual side accessory pockets
- Sleek streamlined design for optimal air flow
- 2" expansion zippers for extra storage
- Integrated hidden rain hoods
- Heat-resistant silicone impregnated bottoms
- Textured neoprene non-slip pad for paint protection
- Universal webbing mount system for secure attachment
- Add the OGIO Tail Bag for a complete rear bag bike set

11" H x 8" W x 16" D (10"W expanded) [each side]
CM 28 H x 20 W x 40.5 D (25 W expanded) [each side]
5 Lbs/2.3 Kg (pair) + 1408 Cu.In/23 L (1760 Cu.In/29 L expanded) High visibility liner + 1000D poly, 400D nylon, textured neoprene, heat-resistant silicone-impregnated nylon



TAIL BAG 2.0



The universal mount OGIO Tail Bag is super functional and easy to use. The expandable main compartment is 30L in capacity and has a reinforced grab handle for grab-and-go convenience.

STYLE: 803002

- Deluxe main compartment with 240 Cu.In of expansion volume
- Sleek streamlined airflow surface design
- Top organizer pocket
- Dual side accessory pockets
- Integrated hidden rain hood
- Reinforced textured neoprene non-slip pad for paint protection
- Universal webbing mount system for secure attachment
- Easy grab reinforced handle
- Add OGIO Saddle Bags for a complete rear bag bike set

7" H x 13" W x 14" D (10"H expanded)
 CM 17.5 H x 33 W x 35.5 D (25 H expanded)
 2.2 Lbs/1 Kg + 1274 Cu.In/21 L (1820 Cu.In/30 L expanded)
 1000D poly, 400D nylon, textured neoprene



SUPERMINI TANKER 2.0



Despite its small size, you can really pack the Supermini Tanker Bag tight thanks to several compartments and organization pockets. Grab and go with the reinforced handle, and when it's time to jump off the bike, use the convenient shoulder strap to throw it on and go.

STYLE: 803001

- Touch sensitive phone window
- Deluxe main compartment design with easy access organizer pocket
- Sleek streamlined air flow surface design
- Textured neoprene non-slip pad for paint protection
- Shoulder strap included for off-the-bike use
- Easy grab reinforced handle

3.75" H x 9" W x 11" D / CM 9.5 H x 22.5 W x 28 D + 1.0 Lbs/0.45 Kg
371 Cu.In/6 L + 1000D poly, 400D nylon, textured neoprene



HONCHO 2.0 ATV REAR BAG



The Honcho is made of heavy grade materials with added molded exterior features, our "Dust Gasket" seal closure system, expandable storage compartments and universal mounting straps. Rest assured that this bag is built to take on the roughest of rides.

STYLE: 805005

- Rigid construction holds shape when empty
- Zipper-less main compartment opening for easy access
- Quick access buckles
- Multiple internal compartment storage with collapsible divider
- "Dust Gasket" seal protects inside contents from moisture, dust and mud
- Quick access molded top pocket with water-resistant zipper
- Adjustable/removable cinch strap system for extra storage
- Oversized bungee "Lid Lockers" keep bag closed at higher speeds
- Multiple D-rings for added tied down attachments
- Durable Velcro® strap tie downs easily secure to most ATV's
- Internal zippered water-resistant pockets
- 6 internal elastic mesh compartments
- Padded back rest
- 1 external weather-resistant bag
- 1 external insulated weather-resistant bag

11" H x 33" W x 11" D / CM 28 H x 83.5 W x 28 D
14 Lbs / 6.5 Kg + 6,125 Cu.In/100L + 1280D ballistic poly,
tarpaulin, 600D poly



| PACKS





JO SHIMODA DRIFTER PACK

REV PACK



The OGIO Rev Laptop Backpack is a fully-loaded pack that can handle any situation. Strategically placed compartments and pockets keep all the most essential gear right at your fingertips.

STYLE: 5918037OG

- Large main compartment for your daily essentials
- Crush proof Tech Vault pocket with soft tricot liner
- Dedicated fleece-lined top loading laptop compartment fits most 15" laptops
- Integrated foam panels keep your electronics and other valuables protected
- Padded iPad/tablet/e-reader pocket
- HUB (Hybrid Uni-body Back-panel) for ultimate comfort
- Padded mouse/digital camera pocket
- Increased shoulder strap foam padding creates Sweet Spot comfort zone
- Fully adjustable ergonomic shoulder straps with molded protection zone
- Two zippered side utility pockets
- Dual side water bottle/accessory holders
- Deluxe organization panel with zippered stash pocket
- Soft touch padded neoprene grab handle

18.25"H x 15"W x 10.5"D / CM 46 H x 38 W x 26.5 D
3.5 Lbs/1.6 Kg + 2050Cu.In/33.5 L
Laptop Sleeve 15.5"H x 11"W x 1"D + 420D ballistic poly

| stealth



| ALEX MARTIN



ALL ELEMENTS AERO-D



The All Elements Aero-D is a sweptback design paired with durable, seam-welded waterproof construction ideal for motorists, cyclists, and outdoor sports enthusiasts. The welded seams and roll-top construction locks out moisture and the water-resistant front zipper pockets keeps essentials easy to access. Whether on your daily commute or a weekend trek, this pack is essential to keeping your gear dry.

STYLE: 5919573OG

- Waterproof welded pipe and seam roll top construction
- New aerodynamic shape with 3 external water-resistant pockets
- Velcro® attached and removable organization panel fits most 15" laptops
- Padded air flow back panel
- Reflective accents for visibility at night

20.5" H (rolled) x 10.5" W x 6.75" D / CM 52 H x 26.5 W x 17 D

2.5 Lbs/1.13 Kg + 1600 Cu.In/26 L

Laptop sleeve 14.5"H x 9.75"W x 1"D

Welded 420D nylon with TPU film laminate



| LEVI KITCHEN



COVERT PACK



The Covert Pack's sleek design is packed with pockets and features to keep you organized and your gear protected. 4 zippered front pockets, 2 stretch mesh side pockets and a luggage handle pass-through on the back panel will make this your go to bag for daily use.

STYLE: 804008.01

- Dedicated padded laptop compartment fits most 15" laptops
- Large main compartment with padded tablet sleeve
- Quick access top pocket with 2 stretch mesh organizers
- Front pocket features an organizer panel
- 2 large side stretch mesh pockets can hold water bottles
- Ergonomic padded shoulder straps and adjustable sternum strap
- Padded back panel with luggage handle pass-through feature

17.5"H x 10" W x 7 1/4" D / CM 44.5 H x 25.4 W x 18.4 D
2.2 Lbs/1.0kg + 1,265 Cu.In/20.7 L
600D printed poly

| woody



| HAIKEN DEEGAN



DRIFTER PACK



The Drifter Pack features a padded luggage handle pass-through system on the back panel and includes 4 separate zippered main body compartments, a side pocket and a mesh water bottle holder to keep you totally organized.

STYLE: 804004.02

- Separate computer pocket fits most 17" laptops
- Custom molded aluminum grab handle
- Large main compartment with padded tablet pocket
- Deluxe organization panel
- Padded Air Flow back panel with moisture wicking air mesh
- Sternum strap for secure fit
- Luggage handle pass-through on the back panel

18.8" H x 15" W x 7.75" D / CM 47.5 H x 38 W x 19.5 D
2.6 Lbs/1.15 Kg + 1,875 Cu.In./31 L
330D x400D nylon/poly



| dark static

| CHRIS BLOSE



EXCELSIOR PACK



With dual main compartments and an ultra-padded air mesh back, this casual style pack is an excellent choice for school or work.

STYLE: 411069_03

- Main compartment with padded laptop and tablet/e-reader sleeves
- Large secondary compartment for belongings and essentials
- Easy-access front sleeve pocket
- Front zippered pocket with organization panel and key clip
- Fleece-lined valuables pocket
- Ergonomic padded straps with adjustable sternum strap
- Laptop sleeve: 15.5"H x 11.25"W x 1.5"D; fits most 17" laptops

19.5"H x 13.5"W x 9"D / CM 49.5 H x 34 W x 22.5 D
2 Lbs/0.9 Kg + 2450 Cu.In/40.1 L
Laptop sleeve 15.5"H x 11.25"W x 1.5"D
600 D printed poly, 600 D shadow ripstop

| stealth



6L AND 3L DRY SACK



The 6L and 3L Dry Sacks were designed to fit the Medium sized and Small sized tank bags, but can be used with any OGIO on bike bag (or any other OGIO bag!) The roll top design and taped seams make this watertight and super protective. The high vis lining makes finding your stored goods a snap.

SMALL 3L | STYLE: 805007

MEDIUM 6L | STYLE: 805006

- Roll top design
- Taped seams for waterproof storage
- High vis lining

MEDIUM 6L DRY SACK
15" H x 6.5" W x 4.75" D / CM 38 H x 16.5 W x 12 D
366 Cu.In/6 L + 0.1 Lbs/45 grams
210D Ripstop Nylon with PU Coating

SMALL 3L DRY SACK
12.75" H x 5.75" W x 4" D / CM 32.3 H x 14.6 W x 10.1 H
183 Cu.In/3 L + 0.08 Lbs/36 grams
210D ripstop nylon with PU coating



| small



| medium

GRAVITY DUFFEL BAG



The Gravity Duffel bag is the answer to any serious athlete's needs. Featuring a large main compartment, side pockets for shoes and additional storage, an armored tech vault pocket, and expandable bottom keep your gear organized and in ready condition.

STYLE: 5919323OG

- Crush resistant, lockable tech vault pocket
- Expandable, breathable bottom storage area
- Large main compartment
- External Helmet storage system
- Ventilated side shoe pocket, fits multiple pairs of shoes
- Opposite side pocket for additional shoes or wet/dry area
- Adjustable backpack style shoulder straps with integrated carry handle
- Multiple zippered pockets/organization compartments in front storage panel pocket
- Full size, insulated water bottle holder
- Lightweight, high tensile strength fabrics, and abrasion resistant tarpaulin base

26" L x 12" W x 11.5" H / CM 66 L x 30.5 W x 29 H
3.2 Lbs/1.5 Kg + 3000 Cu.In/49 L
420D cross dobby, 210D hexa cross



| TRAVEL





JORDAN SMITH



ONU-29 BAG

The ONU-29 Travel Bag features our signature focus on quality, space and organization. Its durability is showcased in the solid structure and attention to detail. For a check-in bag that can fit it all and fit into your style, the ONU-29 is your bag.

STYLE: 5918040OG

- Multiple grab handles
- Internal suit strap
- Interior mesh divider
- Interior compression strap
- 2.5" expansion zipper
- Retractable Pullman handle
- Two large external pockets

(Unexpanded) 29" H x 16" W x 13" D /
CM 73.5 H x 40.5 W x 33 D
10.6 Lbs/4.8 Kg + 5800 Cu.In/95 L
600D poly, 1680D poly, 840D poly swivel dobby

| stealth
5918040OG



| stay classy
804001.02

| NATE THRASHER



ONU-22 BAG

The ONU-22 is our most popular travel bag and with good reason. It's the perfect U.S. airline regulation carry-on size and combines style with streamlined easy-going looks.

- Custom in-line skate wheels and locking retractable handle provide optimum mobility
- Internal compression straps
- Two low profile external pockets
- Custom OGIO ID sleeve
- Multiple grab handles
- Airline regulation carry-on size with 2.5" expansion zipper (must be checked when expanded)

(Unexpanded) 22" H x 14" W x 9" D /
CM 55.5 H x 35.5 W x 22.5 D
8 Lbs/3.6 Kg + 2800 Cu.In/46 L
600D poly, 1680D poly, 840D poly
swivel dobby



| stealth
5918039OG



| BRANDON HARTRANFT



| stay classy
804000.03



| woody
804000.02

ONU-26

The sturdy ONU-26 features great internal organizational storage, an upgraded trolley handle and rugged TPU wheel set. Designed to be your go-to travel bag no matter where the road takes you.

STYLE: 804002.01

- 26" check-in rolling suitcase
- Main compartment with clothing compression straps
- Dual (1 mesh / 1 liner) internal zippered divider pockets
- 2" zippered expansion gusset
- 2 external quick access pockets
- Rugged TPU wheel set
- Burly extendable luggage handle

(Unexpanded) 26"H x 15" W x 12" D /
CM 66 H x 28 W x 30 D + 11 Lbs/5 Kg + 4,290 Cu.In/70 L
400D nylon with TPE backing



| dark static



ONU 4WD

This 4-wheel drive hybrid carry on to meet your highest expectations. Big enough for carrying your essential needs, the quick access external panel can carry your features a padded laptop compartment. Glide through airports in style with the ONU-4WD.

STYLE: 804003.01

- USA airline regulation carry-on
- Hybrid molded hard shell bottom and soft sided top
- External zippered compartment for easy access when stowed in the overhead bin
- Main compartment with clothing compression panels
- Internal zippered privacy pocket
- Zippered divider panel with low profile mesh pocket
- 2" zippered expansion gusset
- Polycarbonate/ABS shell with Hinomoto™ wheel set
- Rugged zippers and transport grab handle

(Unexpanded) 21.75" H x 14" W x 9" D /
CM 55 H x 35.5 W x 22.75 D + 7 Lbs/3.2 Kg + 2,194 Cu.In/36 L
400D nylon with TPE backing

| dark static



| CHRISTIAN CRAIG



MEET THE TEAM

SX/MX TEAMS

HRC HONDA
PRO CIRCUIT KAWASAKI
RED BULL KTM
ROCKSTAR HUSQVARNA
STAR YAMAHA
HEP SUZUKI
MCR HONDA
CLUB MX YAMAHA
AEO KTM
PHOENIX HONDA
AJE GAS GAS
TEDDER RACING
MDK RACING
BARX SUZUKI

PRO / AM

AARON PLESSINGER
 AJ CANTANZARO
 ANDREW HERTZLER
 ANTHONY RODRIGUEZ
 ANTONIO CAIROLI
 AUSTIN BLACK
 AUSTIN FORKNER
 AUSTIN POLITELLI
 BENNY BLOSS
 BRANDON HARTRAFT
 BROCK PAPI
 BROCK TICKLE
 BRYSON GARDNER
 CADE CLASON
 CAMERON MCADOO
 CARSON MUMFORD
 CHRIS BLOSE
 CODY SCHOCK
 COLE THOMPSON
 COLT NICHOLS
 COOPER WEBB
 COTY SCHOCK
 CULLIN PARK
 DAXTON BENNETT
 DEAN WILSON
 DEREK DRAKE
 DEREK KELLY
 DEVEN RAPER
 DEVIN SIMINSON
 DOMINIQUE THURY
 DYLAN FERRANDIS
 DYLAN WALSH
 DYLAN WOODCOCK
 ENZO LOPEZ
 FABIO SANTOS
 FREDRIK NOREN
 GABI ANDRIGO
 GARED STEINKE
 GARRETT ALUMBAUGH
 GARRETT MARCHBANKS
 GAVIN TOWERS
 GRANT HARLAN
 GRAYSON ELLER
 GUILHERME BRESOLIN
 GUILLEM FARRES
 HAIDEN DEEGAN
 HENRY MILLER
 HUNTER LAWRENCE
 HUNTER YODER
 JACE KESSER
 JACE OWEN
 JACK CHAMBERS
 JACK ROGERS
 JARRET FRYE

JEFF WALKER
 JEFFREY HERLINGS
 JEREMY HAND
 JEREMY MARTIN
 JERRY ROBIN
 JETT LAWRENCE
 JO SHIMODA
 JOEL HETRICK
 JORDAN JARVIS
 JORDAN SMITH
 JORGE PRADO
 JOSE ANTONIO BURTON
 JOSH CARTWRIGHT
 JOSH HILL
 JOSH OSBY
 JOSH VARIZE
 JUSTIN BOGLE
 JUSTIN COOPER
 JUSTIN HILL
 JUSTIN RODBELL
 JUSTIN STARLING
 KEN FINELS
 KEVIN MORANZ
 KYLE BITTERMAN
 KYLE CHISHOLM
 KYLE PETERS
 LADEN BRASWELL
 LANCE KOBUSCH
 LANDIN PEPPERED
 LANDON GIBSON
 LEVI KITCHEN
 LOGAN KARNOW
 LORENZO LOCURUO
 LUCA MARSALISI
 LUKE NEESE
 MADDOX TEMMERMAN
 MALCOLM STEWART
 MARCELLO LEODORICO
 MARSHAL WELTIN
 MARVIN MUSQUIN
 MAX MILLER
 MAX VOHLAND
 MICHAEL HICKS
 MIKE ALESSI
 MITCHELL FALK
 MITCHELL OLDENBURG
 NATE THRASHER
 NICK BLILER
 NICK DESIDERIO
 NICK ROMERO
 NICK SCHMIDT
 NICOLAS ISRAEL
 PAULO ALBERTO
 PHIL NICOLETTI
 PRESTON BOESPFLUG
 RAMYLLER ALVES
 RJ HAMPSHIRE
 ROBBIE WAGEMAN
 RYAN BREECE
 RYDER DIFRANCESCO
 SARAH RAQUEL
 SETH HAMMAKER
 SHANE MCELDRATH
 STILEZ ROBERTSON
 TALON HAWKINS
 TIGER WOOD
 TOMMY RIOS
 TRISTAN LANE
 VINCE FRIESE
 WILLY BROWNING

FREERIDE / FMX

PATRICK EVANS
 ADAM JONES
 AXELL HODGES
 BLAKE WILLIAMS
 BRIAN "MCGNARLS" MCCARTY
 COLBY RAHA
 DARRYN DURHAM
 DESTIN CANTRELL
 GENKI "WANKY" WATANABE
 JEREMY "TWITCH" STENBERG
 JIMMY FITZPATRICK
 JUSTIN MULFORD
 ROBBIE MADISON
 TAKAYUKI "TAKA" HIGASHINO
 TYLER BEREMAN
 VICKI GOLDEN

OFF ROAD

CODY WEBB
 COLE MARTINEZ
 COLTON AECK
 JOSH STRANG
 MARK SAMUELS
 RICKY BRABEC
 RYAN SURRATT
 TREVOR STEWART
 ZACH BELL

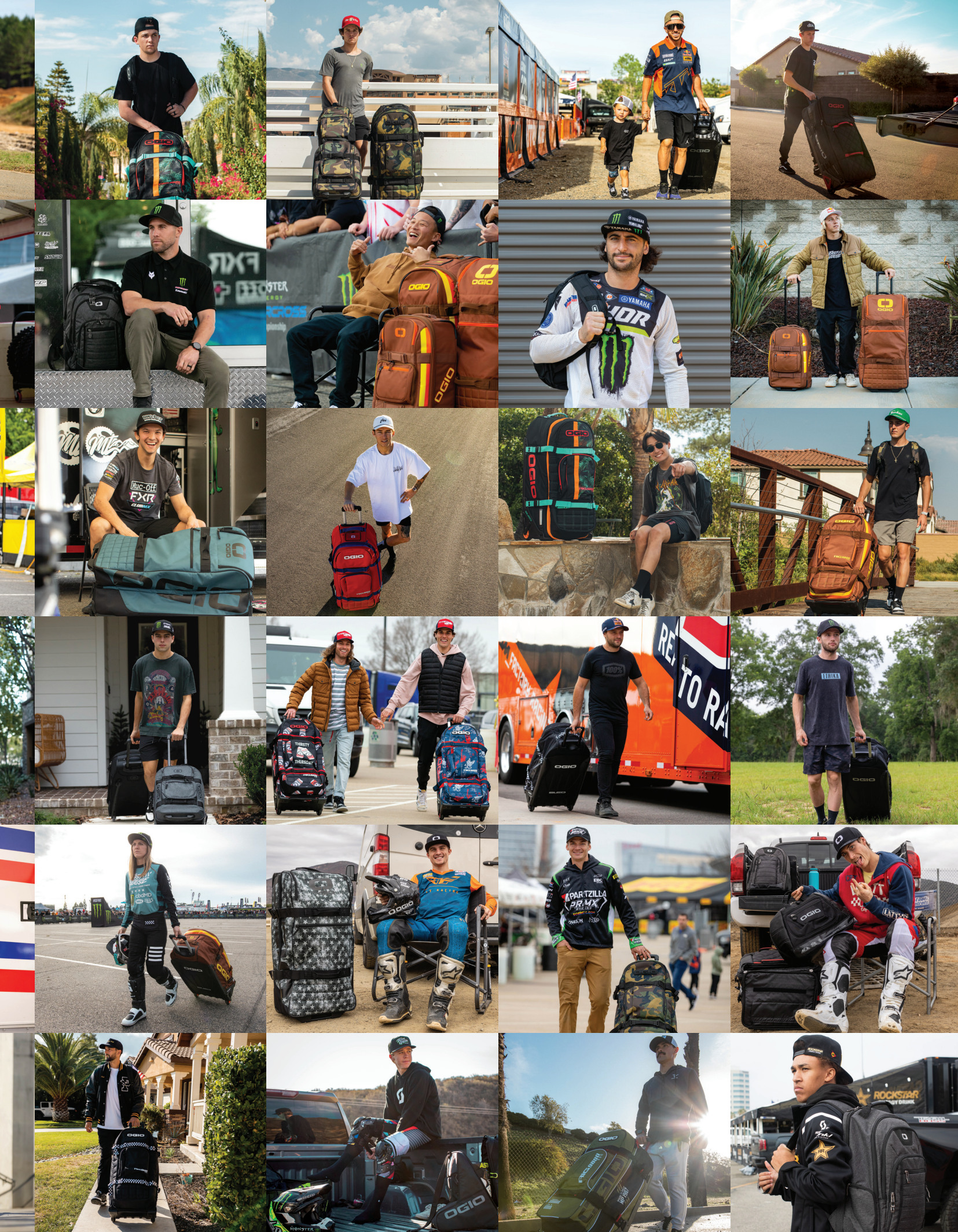
ROAD RACE

MAX WHALE
 BRIAR BAUMAN
 JAMES RISPOLI
 KODY KOPP
 SAMMY HALBERT
 SHAYNA TEXTER-BAUMAN

AMBASSADOR

ADAM ENTICKNAP
 ALEX MARTIN
 ALEX RAY
 ASHLEY FIOLEK
 BEN LAMAY
 CHAD REED
 COLE SEELY
 DAVI MILLSAPS
 JAKE ZEMKE
 JIMMY BUTTON
 JOSH GRANT
 JOSH HANSEN
 JUSTIN BRAYTON
 RICKY JOHNSON
 RYAN VILLOPOTO
 TYLA RATTRAY
 VANN MARTIN





INTERNATIONAL DEALER CONTACTS:

INTERNATIONAL INQUIRIES:
sales@ogio-powersports.com

ARGENTINA AND URUGUAY:

POWERPARTS SRL

Email: infor@powerparts.site
Phone: +54 9 228 165 4083
Website: powerparts.site

AUSTRALIA:

CASSONS

Email: enquiries@cassons.com.au
Phone: +61 2 8882 1900
Website: www.cassons.com.au

BELGIUM, NETHERLANDS, LUXEMBOURG:

BIHR BELGIUM

Email: info@bihr.eu
Phone: +32 (471) 10 18 94
Address: Pierstraat 231 (3rd floor), 2550
Kontich, Belgium

BRAZIL:

BRASIL RACING

Email: brasil@brasilracing.com.br
Phone: 55-11-3855-4571
Website: www.brasilracing.com.br

BULGARIA:

LINSON MOTO LTD.

Email: sales@linsonmoto.bg
Phone: +359 882 743 105
Website: linsonmoto.bg

CANADA:

MOTOVAN

Email: contact@motovan.com
Phone: 800-363-0808
Website: www.motovan.com

CHILE:

PALMAX

Email: contacto@palmax.cl
Phone: 56-2-2229526
Website: www.palmax.cl

CHINA:

WUYI CHUANGMEI SPORTING GOODS CO., LTD.

Email: 15372924234@163.com
Phone: +86 15372924234
Website: chuangmeicp.tmall.com

FRANCE:

BIHR

Email: info@bihr.eu
Phone: +33 3 89 70 30 00
Website: bihr.pro

GEORGIA:

TECH CRAFT LLC

Email: sales1@techcraft.ge
Website: www.techcraftdistr.com
Address: Georgia, Tbilisi, Isani district,
Vazisubani setll., bld. 1

GERMANY:

PASSION PARTS

Email: info@passion-parts.com
Phone: +49 7556 93168 50
Website: www.passion-parts.com

GREECE:

DRAKOS

Email: george@drakos.com.gr
Phone: +30 210 825 1640
Website: www.drakos.com.gr

INDONESIA:

ARDIANS MX SHOP (CV ARDIANS)

Email: irwanardiansyah2003@yahoo.com /
admin@ardiansmx.com
Phone: +62 274 374439 / +62 811286650
Website: www.ardiansmx.com

ISRAEL:

ABMC MANAGING & INVESTMENTS LTD

Email: sales@abmc.co.il
Phone: 972 1 700 553 007
Website: www.abmc.co.il

ITALY, SPAIN, MALTA:

ATHENA

Email: 2ruote@athena.eu
Phone: +39.0444.727272
Website: www.athena.eu

JAPAN:

EUROGEAR

Phone: +81 -03-3527-3686
Website: www.eurogear.jp/collections/
ogio-powersports

KUWAIT, SAUDI ARABIA, UAE, OMAN:

K&S BIKE TRADING EST.

Email: info@knskw.com
Phone: +965 922 56 326
Website: www.knskw.com

MALAYSIA:

RIDERS GARAGE

Email: sales@ridersgarage.co
Phone: +6017-2929775
Website: www.ridersgarage.co
Address: 22, Jalan PJS 11/14, Bandar
Sunway, 46150 Petaling Jaya, Selangor

MEXICO:

EXCLUSIVE MOTO PRODUCTS

Website: www.xmp.mx
Consumer Website: www.motocity.mx
Email: gerencia@xmp.mx
Phone: 7176398

NEW ZEALAND:

FORBES AND DAVIES

Email: sales@forbesanddavies.co.nz
Phone: +64 3 344 0023
Website: www.forbesanddavies.co.nz

SWEDEN, DENMARK, NORWAY:

BIHR NORDICS

Email: info@bihr.eu
Phone: +46-31 727 63 00
Website: www.bihr.eu/se

PERU:

SPORTS PLANET LATINOAMERICA SAC

Email: reception@sportsplanetla.com
Phone: (511) 6287244 / 628 7248
Website: www.sportsplanetla.com

PHILIPPINES:

MOTOWORLD

Phone: + 63 2 4704745 or 46
Email: assistme@motoworld.com.ph

POLAND, CZECH REPUBLIC, SLOVAKIA:

PRO SPOT RB S.C.

Email: prospot@prospot.pl
Phone: +48 665.91.90.90
Website: h e-ogio.pl
Facebook: /Ogio Poland

ROMANIA:

LINSON MOTO LTD.

Email: sales@linsonmoto.ro
Phone: +40 316 301 315
Website: linsonmoto.ro

SWITZERLAND:

BIHR SWISS SA

Email: info@bihr.eu
Phone: +41 26 422 01 60
Address: Route de la plaine 45
1580 AVENCHES, Suisse

UK & IRELAND:

MADISON

Email: sales@madison.co.uk
Phone: 020 8385 3385
Website: www.ogio.co.uk

UNITED ARAB EMIRATES:

MX ONLINE

Email: sale@mxonline.shop
Phone: +971585926865
Website: www.mxonline.shop



DISTRIBUTED EXCLUSIVELY
BY O'NEAL USA
799 CAMARILLO SPRINGS RD
CAMARILLO, CA 93012 USA

TOLL FREE: (800) 326-6325
LOCAL: (805) 426-3300

**FOR INTERNATIONAL OR DOMESTIC
SALES INFORMATION CONTACT:**

SALES@OGIOPOWERSPORTS.COM

WWW.OGIOPOWERSPORTS.COM

@OGIO_POWERSPORTS  



| MAX VOHLAND

2024 | POWERSPORTS CATALOG

OGIO®



1 96919 16160 1
Product ID: 0000-279
2024 OGIO POWERSPORTS CATALOG