



Find the freedom to show your *relaxed* and *fun* side



About Us

When we say “About Us,” we mean “About You.” It’s your life, and you have the freedom to choose... who you want to be, where you want to go, who you love, where you live, where you work, and what you wear. Your life is diverse, bold, and ever-evolving, and no single lifestyle brand can get the job done. Fashion is what you buy, and style is what you do with it. We are humbled to find our way into your closet and to help create your style showcasing your life, your spirit.

Boxercraft was founded in 1985, catering to a casual loungewear style sweeping across college campuses. Our loungewear and cool graphics positioned us at the heart of the “spirit wear” world in the campus bookstores. With decades of experience in the “spirit” business, our Boxercraft “spirit” has greatly evolved. As we have continued to perfect our brand, we have built a culture of true teamwork and a service spirit that caters to its customers. We now offer a variety of men’s and women’s loungewear. Today’s Boxercraft is a collection crafted for comfort and style. It embraces a casual lifestyle and the freedom to relax.

BOXERCRAFT
your life. your spirit.™

Women's Essentials Collection

“The world is full of
magic things, patiently
waiting for our senses
to grow sharper.”

W.B. YEATS

BOXERCRAFT
your life. your spirit.





Essential? Yes. Basic? Definitely not. The cotton blend jersey with a softly brushed finish makes a difference. With a scoop neck and racerback, there's no limit to how you can wear this solid tank top. Pair with shorts. Layer under a deep V sweater. Dress it up with a blazer. Get creative. Stay classic. Just make sure you have plenty of colors on hand.

BW2502 *Essential Racerback Tank*

- 4.3 oz., 80% polyester, 20% cotton
- self binding at neck and armhole
- shirrtail hem

Sizes: Women's XS - 2XL

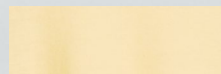
MSRP \$18.85



Black
BLK



Brick Red
650



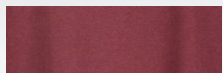
Daffodil
743



Granite
GNT



Mandarin
815



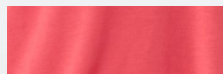
Maroon
MAR



Navy
NAV



Pacific Blue
460



Paradise
643



Purple
505



Shamrock
320



Sky Blue
490



True Red
660



True Royal
425



White
WHT



Wisteria
565





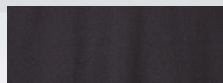
Put a new twist on your next workout with our Twisted Back Tank. The poly-cotton brushed jersey fabric is breathable, soft and moves easily with you. Features racerback styling with a single twist and a shirrtail hem for added freedom and comfort.

BW2505 *Women's Twistback Tank*

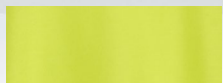
- 4.28 oz., 80% polyester, 20% cotton
- self binding finishing armhole & neck opening
- racerback detailing with single twist
- machine wash cold; tumble dry low
- shirrtail hem

Sizes: Women's XXS - 2XL

MSRP \$24.85



Black
001



Cyber Lime
385



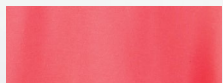
Mandarin
815



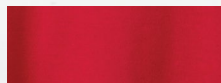
Navy
400



Pacific Blue
460



Paradise
643



True Red
660



True Royal
425



Wisteria
565





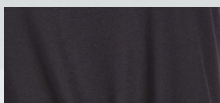
With the Knot Front Tank, you can dare to be a bit different with your tank game. The soft poly-cotton brushed jersey fabric design has a scoop neckline and off-center knot front twist. It keeps you comfortably cool, with a look that is completely cute!

BW2507 *Knot Front Tee*

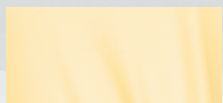
- 4.28 oz., 80% polyester, 20% cotton brushed jersey
- self binding finishing armhole & neck opening
- off-center knot front twist
- scoop neckline

Sizes: Women's XXS - 2XL

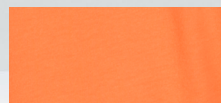
MSRP \$26.85



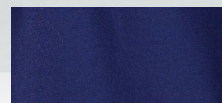
Black
001



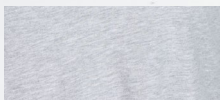
Daffodil
743



Mandarin
815



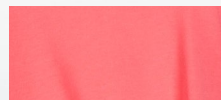
Navy
400



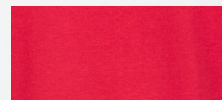
Oxford Heather
078



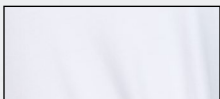
Pacific Blue
460



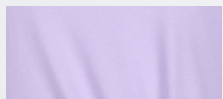
Paradise
643



True Red
660



White
100



Wisteria
565



NEW



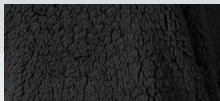
This tank looks and feels so soft, you'll want to wear it to work out, hang out or chill out. The loose fit style with a smidge of stretch make it a perfect fit. With a super-flattering racerback design, a satin scoop neckline and a hi/low hem, it's sure to become a favorite for every casual endeavor.

BW2508 *Bamboo Hi/Low Tank*

- 5.8 oz., 96% bamboo, 4% spandex
- stretch satin scoop neckline and armholes
- luxurious soft feel and look
- hi/low hem
- racerback

Sizes: Women's XXS - 2XL

MSRP \$22.85



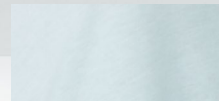
Black
001



Navy
400



Oxford Heather
078



Sky Blue
490



NEW



You'll love the luxuriously soft feel and look of this bamboo tee shirt. The loose fit style is perfected with just the right amount of stretch. A satin neck trim on the scoop neckline and a hi/low hem take it from basic to basically every day!

BW2105 *Bamboo Hi/Low Tee*

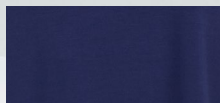
- 5.8 oz., 96% bamboo, 4% spandex
- stretch satin neck trim
- scoop neckline
- luxuriously soft feel and look
- hi/low hem

Sizes: Women's XXS - 2XL

MSRP \$26.85



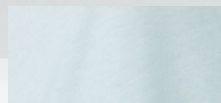
Black
001



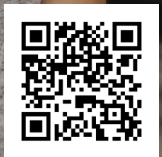
Navy
400



Oxford Heather
078



Sky Blue
490





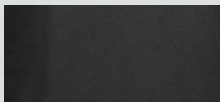
Add a pure cotton V-Neck Tee to your collection to mix things up while keeping comfort at the forefront. Simply designed with side-seam construction for a more tailored and flattering silhouette that will pair well with jeans, shorts or anything. The self-fabric back neck tape adds durability.

BW2201 *Women's V-Neck Tee*

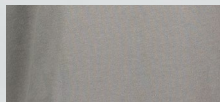
- 4.5 oz., 100% cotton
- ribbed V-neck collar
- self-fabric back neck tape

Sizes: XS - 3XL

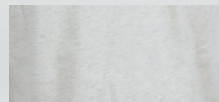
MSRP \$18.85



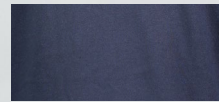
Black
BLK



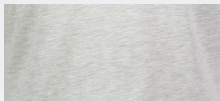
Granite
GNT



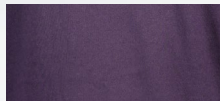
Natural Heather
NAH



Navy
NAV



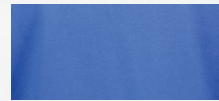
Oxford Heather
OXH



Purple
PRP



Red
RED



Royal
ROY



White
WHT





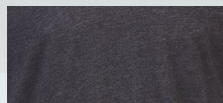
A must-have for your wardrobe, this Tri-Blend Crew is anything but basic. With its soft and stretchy poly, cotton and rayon blend, it will be a tee that you'll wear with everything. The self-fabric neck tape and folded neck opening ensure that it will hold its shape over time.

BW2101 *Women's Tri-blend Tee*

- 4.3 oz., 50% polyester, 38% cotton, 12% rayon
- folded self neck opening
- self-fabric neck tape

Sizes: Women's XXS - 2XL

MSRP \$18.85



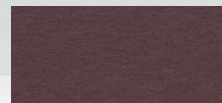
Charcoal Heather
CHH



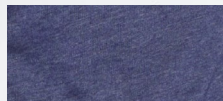
Hunter Heather
HUH



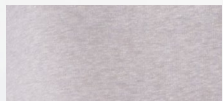
Mint Heather
MNH



Maroon Heather
MRH



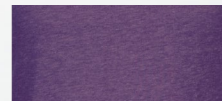
Navy Heather
NVH



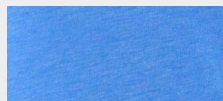
Oxford Heather
OXH



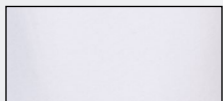
Pink Heather
PKH



Purple Heather
PUH



Royal Heather
RYH



White
WHT



NEW



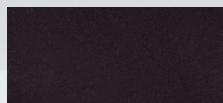
Essential in every sense of the word, the Essential Crewneck Tee will prove itself wear after wear. Double-brushed cotton-poly jersey is so soft to the touch. The folded, self-fabric neck band ensures that it will hold its shape over time. Turnbacks at the sleeve and bottom openings offer a bit more polish to the everyday casual style.

BW2104 *Women's Essential Crew Tee*

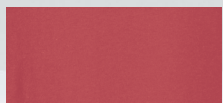
- 4.28 oz., 50% cotton, 50% polyester
- double brushed jersey
- folded neck band
- turnback at bottom opening and sleeve opening

Sizes: Women's XXS - 2XL

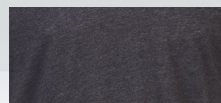
MSRP \$18.85



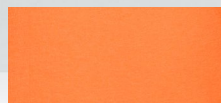
Black
001



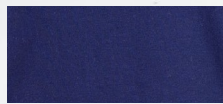
Brick Red
650



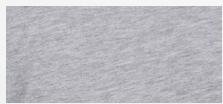
Charcoal Heather
091



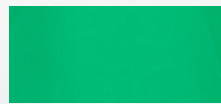
Mandarin
815



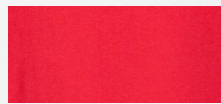
Navy
400



Oxford Heather
078



Shamrock
320



True Red
660



True Royal
425



White
100





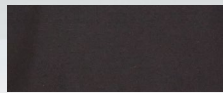
Cute, casual, and oh-so comfy, our Carefree Tee will be one you reach for when working out or simply hanging out. Soft cotton-poly double brushed jersey has a relaxed fit that's extremely versatile. Lapped shoulder seams and a keyhole back opening add athletic appeal. Turnbacks at the sleeve and bottom openings add an extra degree of polish to the tee.

BW2404 *Women's Carefree Tee*

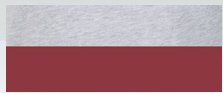
- 4.28 oz., 50% cotton, 50% polyester double brushed jersey
- lapped shoulder seam
- keyhole back opening
- turnback at bottom opening and sleeve opening

Sizes: Women's XXS - 2XL

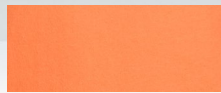
MSRP \$26.85



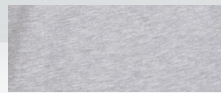
Black
001



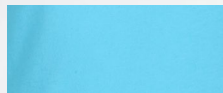
Brick Red/Oxford
965



Mandarin
815



Oxford Heather
078



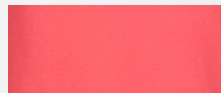
Pacific Blue
460



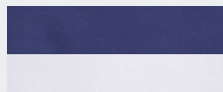
True Royal
425



True Red
660



Paradise
643



Navy/White
904



White/Oxford Htr
903





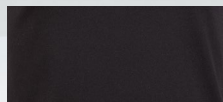
Coming or going, the Bella Crossback Tee provides ultimate comfort - along with fun crossover back detailing. Soft and durable brushed cotton-poly blend fabric is designed with a ribbed neckline and turnback detailing at the sleeves and bottom openings.

BW2405 *Bella Crossback Tee*

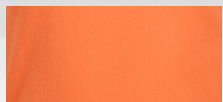
- 4.28 oz., 50% cotton, 50% polyester
- brushed jersey
- crossover back detailing
- keyhole back opening
- turnback at bottom opening and sleeve opening

Sizes: Women's XXS - 2XL

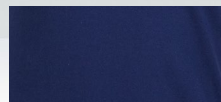
MSRP \$28.85



Black
001



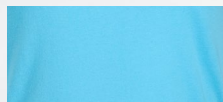
Mandarin
815



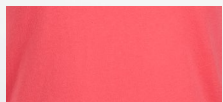
Navy
400



Oxford Heather
078



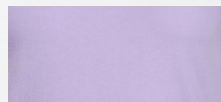
Pacific Blue
460



Paradise
643



White/Oxford Htr
903



Wisteria
565





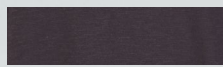
Leave them doing a double take as you walk by. It's fun to do in our Cut It Out Tee. The racerback with cutaway detail is slyly flattering, offset by a slightly scooped neck, short sleeves and shirttail hem. Made of a super soft cotton and poly slub jersey, there's no denying how enjoyable it is to give "back" the attention you deserve.

T67 *Cut It Out Tee*

- 4.3 oz., 60% cotton, 40% poly slub jersey
- super soft and flattering
- racerback with cutaway detail

Sizes: Women's XXS - 2XL

MSRP \$26.85



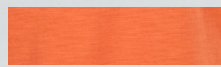
Black
BLK



Daffodil
743



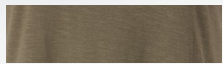
Garnet
GAR



Mandarin
815



Navy
NAV



Olive
OLV



Pacific Blue
460



Paradise
643



Purple
PRP



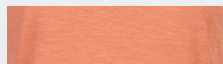
Red
RED



Royal
ROY



Sage
SAG



Terracotta
TER



White
WHT



Wisteria
565





As the name says, this is one Sweet Tee! Soft, textured slub jersey is ultra comfy and the tee is finished with charming details like double-rolled sleeve cuffs, a turnback at the bottom opening and a pleated back yoke panel. The tee has a loose fit, a curved hem on the front and straight hem on back, along with 3" side vents, make it an ideal choice for wearing out over jeans or leggings.

BW2102 *Women's Sweet Tee*

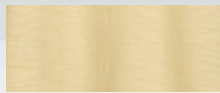
- 4.13 oz., 60% cotton, 40% polyester
- slub jersey • 3" side vents • pleated back yoke panel
- turnback at bottom opening and sleeve opening
- curved hem on front body; straight hem on back body

Sizes: Women's XXS - 2XL

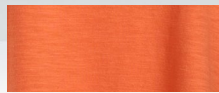
MSRP \$26.85



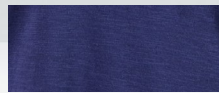
Black
001



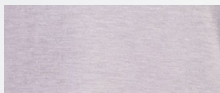
Daffodil
743



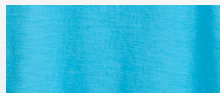
Mandarin
815



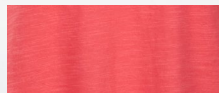
Navy
400



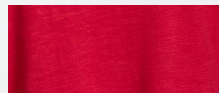
Oxford Heather
078



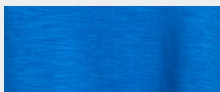
Pacific Blue
460



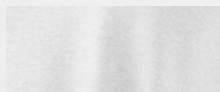
Paradise
643



True Red
660



True Royal
425



White
100



Wisteria
565





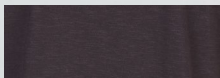
Dare to be a bit different with the flowing style of our Willow Tee. Cotton-poly construction is comfortable in any setting, and the ruffle-layered hem makes this shirt more feminine and flirty than your average tee.

BW2401 Willow Tee

- 4.1 oz., 60% cotton, 40% polyester
- back neck tape
- ruffle-layered bottom

Sizes: Women's XXS - 2XL

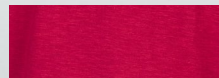
MSRP \$26.85



Black
BLK



Daffodil
743



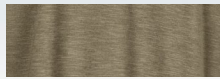
Garnet
GAR



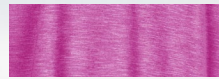
Indigo
IND



Mandarin
815



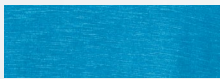
Olive
OLV



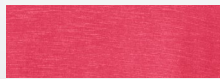
Orchid
ORC



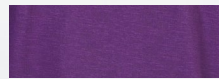
Oxford Heather
OXH



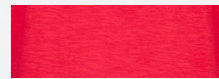
Pacific Blue
460



Paradise
643



Purple
PRP



Red
RED



Royal
ROY



Wisteria
565





Show off your sporty side while keeping it completely cute and comfortable! This solid color tee is made of a super soft cotton and poly slub jersey, with contrasting stitching at the seams and elbow patches for a fun look. Ribbed neck and cuffs holds their shape wherever you day takes you.

BW3166 *Solid Preppy Patch Tee*

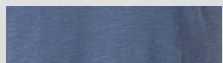
- 4.3 oz., 60% cotton, 40% poly slub jersey
- 1x1 ribbed neck and cuffs
- self-fabric back neck tape

Sizes: Women's XXS - 2XL

MSRP \$28.85



Black
BLK



Indigo
IND



Garnet
GAR



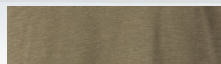
Granite
GNT



Mandarin
815



Navy
NAV



Olive
OLV



Oxford Heather
OXH



Pacific Blue
460



Paradise
643



Red
RED



Royal
ROY



White
WHT



Wisteria
565





Give a loud cheer for your new favorite jersey. With double stripes on sleeves for athletic style, and a roomy, oversized fit for extra comfort, this all-cotton jersey is a winning look, layered or not. Rib knit at cuffs and crewneck. Lift up your team spirit in our long-sleeve Pom Pom Jersey.

BW3514 Pom Pom Jersey

- 5.5 oz., 100% cotton ringspun jersey
- relaxed, oversize fit; double athletic sleeve stripes

Sizes: Ladies XS - 2XL

MSRP \$36.85

		
Black 001	Black/Oxford Htr BOX	Charcoal 090
		
Collegiate Blue 458	Coll. Blue/Black CBL	Daffodil 743
		
Grape 508	Grape/Oxford GPX	Latte 280
		
Natural 103	Navy 400	Navy/Oxford Htr NOX
		
Paradise 643	Purple 505	Red 660
		
Royal 425	Sky Blue 490	White 100
		
		Wisteria 565





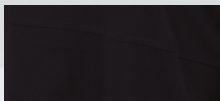
Give a loud cheer for your new favorite jersey. With double stripes on sleeves for athletic style, and a roomy, oversized fit for extra comfort, this all-cotton jersey is a winning look, layered or not. Rib knit at cuffs and crewneck. Lift up your team spirit in our long-sleeve Pom Pom Jersey.

BW3515 *Cropped Retro Jersey*

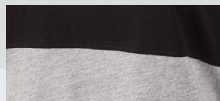
- 5.5 oz., 100% cotton ringspun jersey
- oxford is 90% cotton, 10% poly; charcoal is 60% cotton, 40% poly
- relaxed, oversize fit
- double athletic sleeve stripes

Sizes: Women's XS - XL

MSRP \$34.85



Black
001



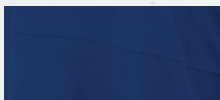
Black/Oxford Htr
BOX



Brick Red
650



Cyber Lime
385



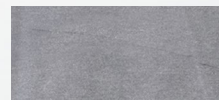
Denim
418



Mandarin
815



Navy/Oxford Htr
NOX



Oxford Heather
078



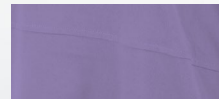
Paradise
643



Shamrock
320



White
100



Wisteria
565





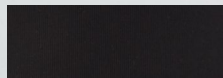
Designed with workouts in mind, the Adrienne Tank helps you keep your cool while working up a sweat. The cotton-spandex fabric is breathable, with enough stretch to move with you. Features racerback styling and a shirttail hem for maximum comfort however you choose to move.

BW2501 *Adrienne Tank*

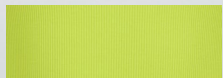
- 5.9 oz., 96% cotton, 4% spandex
- racerback detail
- shirttail hem

Sizes: Women's XXS - 2XL

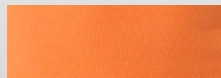
MSRP \$22.85



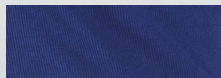
Black
BLK



Cyber Lime
385



Mandarin
815



Navy
NAV



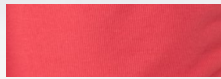
Oxford Heather
OXH



Olive
OLV



Pacific Blue
460



Paradise
643



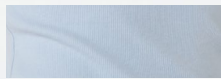
Purple
PRP



Red
RED



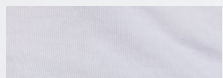
Shamrock
320



Sky Blue
490



True Royal
425



White
WHT





Feminine and flirty, the Baby Rib Top offers cool cotton comfort with just a hint of stretch. Enjoy a contemporary, slightly smaller shirt length with a square neck, lettuce-edge sleeve and hem. An undeniably adorable style that will add flare to any casual look.

BW2403 *Baby Rib Top*

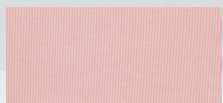
- 5.9 oz., 96% cotton, 4% spandex
- square neckline
- lettuce edge sleeve and bottom opening

Sizes: Women's XXS - 2XL

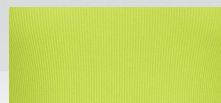
MSRP \$26.85



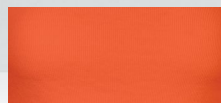
Black
BLK



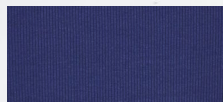
Blush
BLS



Cyber Lime
385



Mandarin
815



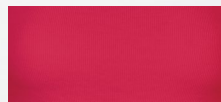
Navy
NAV



Oxford Heather
OXH



Pacific Blue
460



Paradise
643



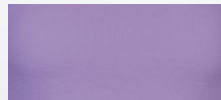
Red
RED



True Royal
425



White
WHT



Wisteria
565





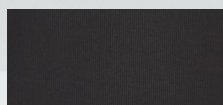
With the Harper Henley, we've taken a classic style and updated it with feminine appeal. Pure cotton softness has a shot of spandex for stretchable, easy comfort. Twill back neck tape and twill tape on the placket are a casual accent, while antique silver snaps are just the thing to set this shirt apart.

BW2402 Harper Henley

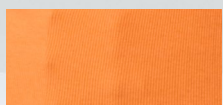
- 5.9 oz., 96% cotton, 4% spandex
- twill back neck tape and twill tape placket
- antique silver snaps

Sizes: Women's XXS - 2XL

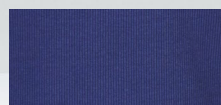
MSRP \$34.85



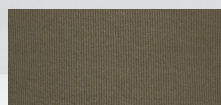
Black
BLK



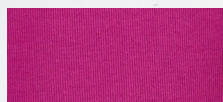
Mandarin
815



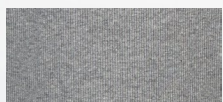
Navy
NAV



Olive
OLV



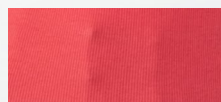
Orchid
ORC



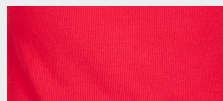
Oxford Heather
OXH



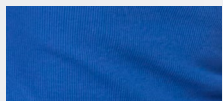
Pacific Blue
460



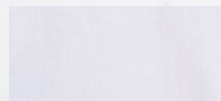
Paradise
643



Red
RED



True Royal
425



White
WHT



Wisteria
565





With its simple design, our Coastal Cover-Up is the perfect dress for a day at the beach or pool. Cotton-poly fabric is soft, comfortable and easy to slip on. Features a crew neckline and racerback detail for restriction-free movement.

BW4101 *Coastal Cover Up*

- 4.1 oz., 60% cotton, 40% poly slub jersey
- self-fabric and armhole binding
- crew neckline
- racerback detail

Sizes: Women's XXS - 2XL

MSRP \$28.85



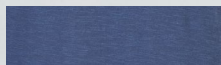
Blush
BLS



Daffodil
743



Garnet
618



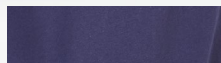
Indigo
IND



Oxford Heather
OXH



Mandarin
815



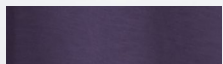
Navy
NAV



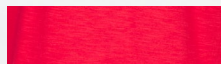
Pacific Blue
460



Paradise
643



Purple
505



Red
RED



True Royal
425



Sage
SAG



Wisteria
565





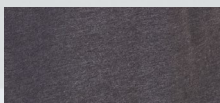
This may be the most versatile piece you add to your wardrobe. Slip on the Caydn Tank Dress and relax in the cool comfort of the 100% cotton design. Wear it alone or dress it up for a fun night out. Neck and armholes are finished with self-bias tape for shape retention, with natural shoulder seams for a flattering look.

BW4102 *Women's Caydn Tank Dress*

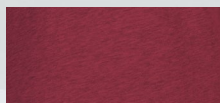
- 4 oz., 100% cotton
- neck and armholes finished self-bias tape
- racerback; straight fit

Sizes: XXS - 2XL

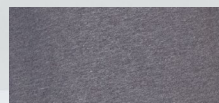
MSRP \$28.85



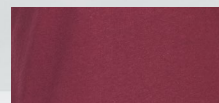
Charcoal
CHA



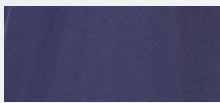
Crimson
CRM



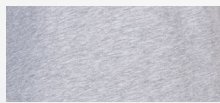
Granite
GNT



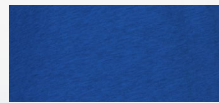
Maroon
MAR



Navy
NAV



Oxford Heather
OXH



Royal
ROY





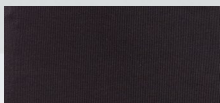
Flattering, flirty and completely comfortable, the Vivian Dress is versatile enough to move between a night out or a day lunching with friends. The pure cotton fabric, with just a hint of stretch, moves with you. Ribbed design has a self-fabric ribbed neck and armhole bands and a self-fabric placket with silver snaps for added appeal. Turnback at bottom opening completes the look.

BW4201 *Women's Vivian Dress*

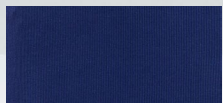
- 5.9 oz., 96% cotton, 4% spandex
- 2x2 ribbed knit
- self-fabric ribbed neck and armhole bands

Sizes: Women's XXS - 2XL

MSRP \$38.85



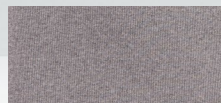
Black
001



Navy
400



Navy/White
901



Oxford Heather
078





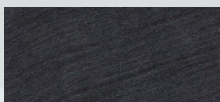
If you're on the prowl for a dress that will give an all-star performance, here you go. It's a heathered tri-blend jersey that's as soft and easy as it gets. The flirty neckline gets laced up with a braided twill cord, while the short sleeves become more playful with athletic striping. Complete with a shirttail hem, the All-Star Dress is sure to win you over.

T59 *All Star Dress*

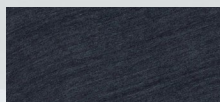
- 4.3 oz., 50% poly, 38% cotton, 12% rayon heather tri-blend jersey
- athletic details with feminine flair
- lace-up neck with braided drawcord

Sizes: XS - 2XL

MSRP \$22.85



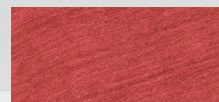
Charcoal Heather
CHH



Navy Heather
NVH



Oxford Heather
OXH



Red Heather
RHT





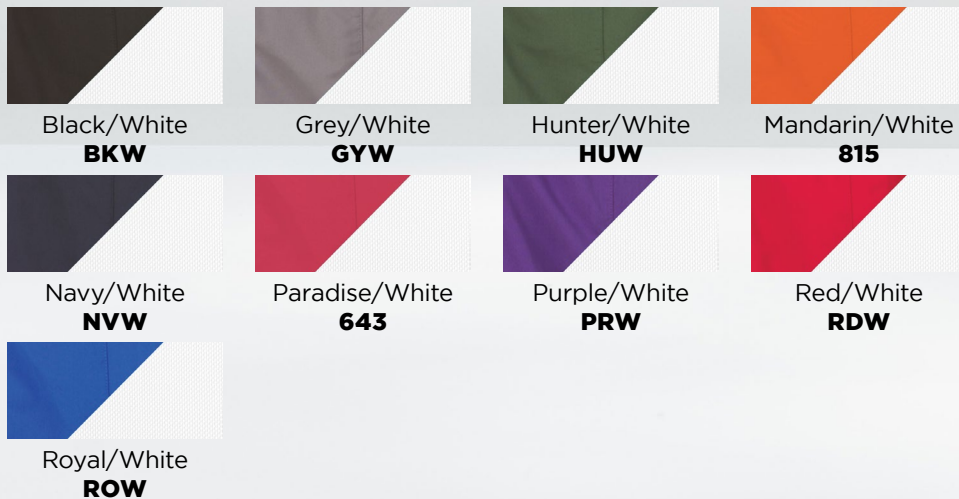
Running, walking or strength training, they're all better when wearing our Basic Sport Short. This poly short has a white mesh side panel, with bindings that match the body color, and a mesh liner and coin pocket.

BW6102 *Women's Sport Short*

- 2.4 oz., 100% poly
- white mesh side panel, liner and coin pocket
- scallop-shaped leg opening

Sizes: Women's XXS - 2XL

MSRP \$24.85





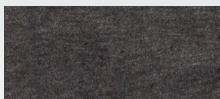
It's time to Rally. We're talking about a spirited fleece short with lived-in softness from day one. With a special enzyme and stone wash process, our essential solid short rivals any vintage look. The wide elasticized waist won't bind or twist, and it adjusts to fit just right with a 3/8" natural colored rope cord. The side pockets always come in handy. Go on, team up the Rally Short with your favorite tee for a winning look every time.

K11 Rally Short

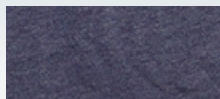
- 6.5 oz., 60% cotton, 40% poly fleece
- stone washed for a vintage feel
- adjust the fit with a 3/8" rope cord

Sizes: Women's XS - 2XL
Youth YS - YL

MSRP \$26.85 - Women's
\$22.85 - Youth



Charcoal
CHA



Navy
NAV



Oxford
OXF





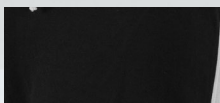
On the track. At the beach. Close to home. You name it. You'll always want the Relay Short at the ready. In skin-sational French terry with a full elastic waist, contrast twill drawcord and jersey trim, this pair is made to be your go-to active shorts.

R65 *Relay Short*

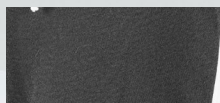
- 8.3 oz., 70% cotton, 30% poly French terry
- 2-1/2" inseam on size small, 2-3/4" on medium
- elastic waist with drawcord

Sizes: Women's XS - 2XL

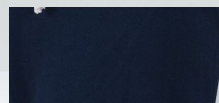
MSRP \$26.85



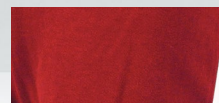
Black/White Trim
BKW



Granite/White Trim
GNW



Navy/White Trim
NVW



Red/White Trim
RDW





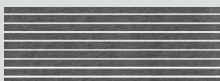
Whether it's a movie night in or a quick weekend errand, the Evelyn Wide Leg is made for everyday casual and sure to be an instant favorite. Soft poly, rayon and cotton blend fabric is oh-so soft and has a shirred waistband with ruffle header and forward side seam for an ultra-feminine look. Side-seam pockets have self pocket bags.

BW6615 *Evelyn Pant*

- 4.3 oz., 60% poly, 28% rayon, 12% cotton
- shirred waistband with ruffle header and forward side seam
- side-seam pockets with self pocket bags

Sizes: Women's XS - 2XL

MSRP \$36.85



Black Heather
Oxford Stripe
BOX



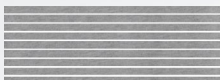
Blush Heather
White Stripe
HSB



Navy Heather
White Stripe
NST



Orchid Heather
White Stripe
STO



Oxford Heather
White Stripe
OXW



Paradise Heather
White Stripe
963



Royal Heather
White Stripe
ROW



True Red Heather
White Stripe
960



Wisteria Heather
White Stripe
956





Cuddle Collection

“I have learned that
there is more power
in a good strong hug
than in a thousand
meaningful words.

- Ann Hood

BOXERCRAFT

your life. your spirit.™



The cuddle vibes are strong every time you wear this Cuddle Puff-Sleeve Top. Super-soft, warm and stretchy fabric is perfect for cooler temperatures. The crewneck style has feminine details like a cinched drawstring waist, three-quarter sleeves and gathering at shoulder seams and sleeve hems.

BW1101 *Cuddle Puff Sleeve Top*

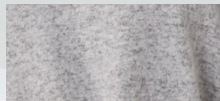
- 6.5 oz., 80% viscose, 17% polyester, 3% elastane
- crew neckline
- cinched drawstring at waist hem
- gathering at shoulder seam and sleeve hem
- machine wash cold; tumble dry low

Sizes: Women's XXS - 2XL

MSRP \$48.85



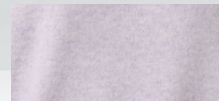
Espresso Heather
211



Oxford Heather
078



Sky Blue Heather
491



Wisteria Heather
566





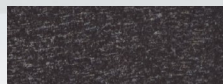
A gentle cuddle can put you in your happy place. Grab hold of that feeling any day, any time in our Cuddle Boxy Crew of crazy-soft Hacci fabric. And you think, huh? What's Hacci? It's a loopy, open knit texture that's as soft as a sweater, but more like a comfy sweatshirt. Only it's lighter, cozier, more stretchable and goes more places. The perfect casual chic hybrid in a loose and flowy fit with a flattering high-low vented hem and brushed finish. Our long-sleeve solid pullover is ready to cuddle. Are you?

L06 Cuddle Boxy Crew

- 6.2 oz., 80% viscose, 17% polyester, 3% elastane
- sweater / sweatshirt hybrid
- rib knit at crewneck and cuffs
- boxy fit

Sizes: Women's XS - 3XL

MSRP \$44.85



Black Heather
BLA



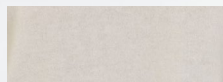
Charcoal Heather
CHH



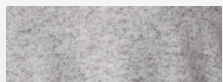
Espresso Heather
211



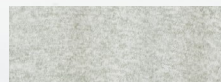
Navy Heather
NVH



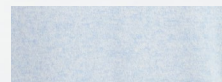
Natural Heather
NAT



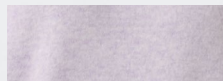
Oxford Heather
OXH



Sage Heather
SAH



Sky Blue Heather
491



Wisteria Heather
566



NEW



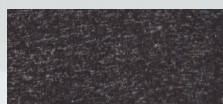
There's comfort, and then there's oversized cuddle comfort. This oversized crew will take it to a new level with raglan sleeves and split side seams. The rounded hem design is super cute, and the ribbed collar, cuffs and waistband add texture and help hold the shape wash after wash.

BW1102 *Cuddle Oversized Crew*

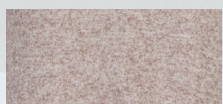
- 6.2 oz., 80% viscose, 17% poly, 3% elastane knit
- hi/low hem; raglan sleeves
- crew neckline; rib cuffs and bottom band
- cover seamed armholes and neckline
- BXC woven logo label at wearers left side seam

Sizes: Women's XXS - 2XL

MSRP \$44.85



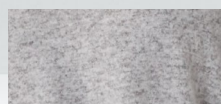
Black Heather
BLA



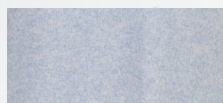
Espresso Heather
211



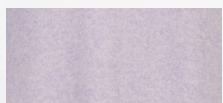
Navy Heather
NVH



Oxford Heather
OXH



Sky Blue Heather
491



Wisteria Heather
566





When it's cuddle weather outside, the Cuddle Soft Wrap Top gives you cuddle vibes anytime you want them. Ultra soft, warm and stretchy fabric literally wraps you in cozy comfort. A wide, circular knit tie closure threads through a hole set on the right side for a perfect wrap. With self-fabric binding at the neck, and 2x2 rib cuffs that hold their shape throughout the day while keeping the cold out. Get ready to wrap yourself in cuddly comfort!

BW1301 *Cuddle Soft Wrap Top*

- 6.2 oz., 80% viscose, 17% poly, 3% elastane
- wide, circular knit tie closure
- 2x2 rib cuffs

Sizes: Women's XXS - 2XL

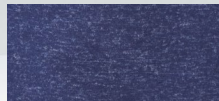
MSRP \$48.85



Black Heather
BLA



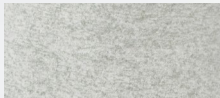
Blush Heather
BLS



Navy Heather
NVH



Oxford Heather
OXH



Sage Heather
SAH





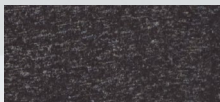
What's in a name? In this case, it's everything! Our Cuddle Soft Hoodie is a cozy layer constructed of viscose, poly and a bit of elastane for ultimate comfort and a just-right amount of stretch. Wear it on its own, or use it to layer up. The hood features wide, tubular drawcards for adjustability. 2x2 folded rib bottom opening and sleeve cuffs hold their shape wear after wear.

BW1501 *Cuddle Hoodie*

- 6.2 oz., 80% viscose, 17% polyester, 3% elastane
- 1 ply, 2 piece hood; self-fabric back neck tape
- 2x2 folded rib bottom opening band and sleeve cuffs
- kangaroo pocket and wide, tubular knit drawcords

Sizes: Women's XXS - 2XL

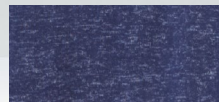
MSRP \$54.85



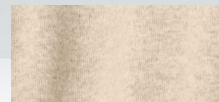
Black Heather
BLA



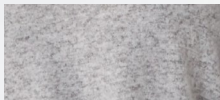
Espresso Heather
211



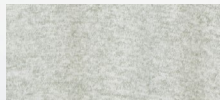
Navy Heather
NVH



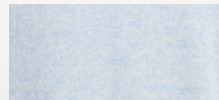
Oatmeal Heather
OMH



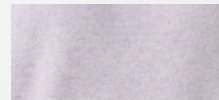
Oxford Heather
OXH



Sage Heather
SAH



Sky Blue Heather
491



Wisteria Heather
566





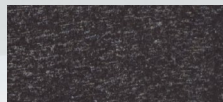
When cold season strikes, make sure the Cuddle Cowl Pullover is in your rotation. It's made of crazy-soft Hacci fabric; a loopy knit texture with subtle stretch and a brushed finish that feels so good against the skin. We think you'll agree that the twill drawcord on the cowl neck is a really cool feature that you can adjust to your exact liking. And who doesn't like a kangaroo pocket, a shirttail hem and cuffs with thumbholes? So come on, it's time to Cuddle.

L12 Cuddle Cowl Pullover

- 6.2 oz., 80% viscose, 17% polyester, 3% elastane
- cowl neck with twill drawcord
- rib cuffs with thumb holes

Sizes: Women's XS - 3XL

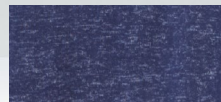
MSRP \$48.85



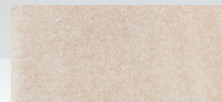
Black Heather
BLA



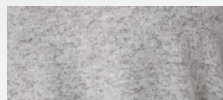
Espresso Heather
211



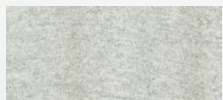
Navy Heather
NVH



Oatmeal Heather
OMH



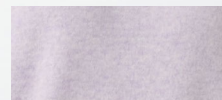
Oxford Heather
OXH



Sage Heather
SAH



Sky Blue Heather
491



Wisteria Heather
566





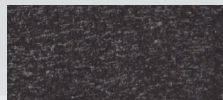
We all love a gentle cuddle. Get that happy feeling anytime in our Cuddle Short. They're made of crazy-soft Hacci fabric, a loopy, open-knit texture with subtle stretch and a brushed finish that feels so good against your skin. Adjust the fit with a twill drawcord waist. Perfect for a cute and cuddly outfit.

L11 Cuddle Short

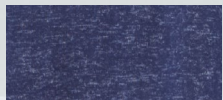
- 6.2 oz., 80% viscose, 17% polyester, 3% elastane
- sweater softness
- self-fabric waistband with drawcord

Sizes: Women's XS - 2XL

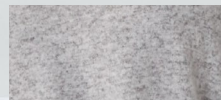
MSRP \$29.85



Black Heather
BLA



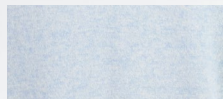
Navy Heather
NVH



Oxford Heather
OXH



Oxford Heather
Natural Stripe
ONS



Sky Blue Heather
491





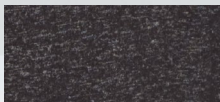
Beyond average joggers, these pants are made of crazy-soft Hacci fabric. It's a loopy, open knit texture that feels as soft as a sweater, and functions more like comfy sweat pants. Only lighter, cozier, more stretchable and goes more places. The perfect casual chic hybrid. The self-fabric waistband adjusts to fit just right with a knotted drawcord, while the ribbed cuffs keep the cold out. These joggers are ready to cuddle. Are you?

L09 Cuddle Jogger

- 6.2 oz., 80% viscose, 17% polyester, 3% elastane
- sweater softness
- self-fabric waistband with drawcord

Sizes: Women's XS - 2XL

MSRP \$44.85



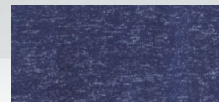
Black Heather
BLA



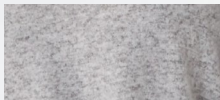
Charcoal Heather
CHH



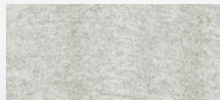
Espresso Heather
211



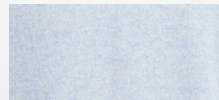
Navy Heather
NVH



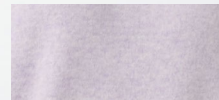
Oxford Heather
OXH



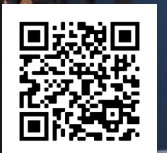
Sage Heather
SAH



Sky Blue Heather
491



Wisteria Heather
566





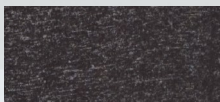
Goodbye boring sweatpants, hello Cuddle Wide Pant. The ultra-soft and lightweight knit fabric gently cuddles your skin, giving you good reason to be happy. You'll quickly like the relaxed and flowy silhouette with a hint of stretch for extra comfort. With a two-tone heather effect and a crazy-soft finish, be ready to cuddle in style (indoors or out).

L10 *Cuddle Wide Leg Pant*

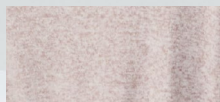
- 6.2 oz., 80% viscose, 17% polyester, 3% elastane
- sweater softness
- self-fabric waistband with drawcord

Sizes: Women's XS - 2XL

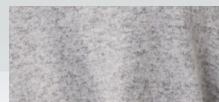
MSRP \$44.85



Black Heather
BLA



Espresso Heather
211



Oxford Heather
OXH





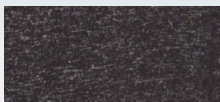
Think about the softest, most versatile cardigan you could ever own. Here you go. Our Cuddle Hooded Cardigan is made from Hacci fabric. It's a loopy, brushed knit texture that's as soft as a sweater and as comfortable as a sweatshirt. Only it's lighter, cozier, more stretchable and goes more places. It's the perfect tunic-length with an open front style that gently drapes into a relaxed fit. Deep front pockets, side vents and a hood enhance the look. Go ahead, cuddle up in your new favorite cardigan.

L08 Cuddle Hooded Cardigan

- 6.2 oz., 80% viscose, 17% polyester, 3% elastane
- super soft with stretch comfort
- versatile tunic length

Sizes: Women's XS - 3XL

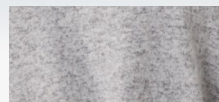
MSRP \$54.85



Black Heather
BLA



Espresso Heather
211



Oxford Heather
OXH



NEW



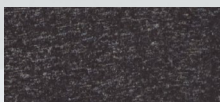
A live-in style and a time-tested look have combined to create the perfect go-to cardigan. The open-front design with a single snap button closure plus a wide ribbed collar, cuffs and bottom band work together for versatility and function. The oversized fit, with a rounded hem and convenient front pockets, make it even better.

BW1103 *Cuddle Cardigan*

- 6.2 oz., 80% viscose, 17% poly, 3% elastane knit
- wide ribbed collar, cuffs and bottom band
- open front with single snap button closure; front pockets
- rounded hem; oversized fit

Sizes: Women's XXS - 2XL

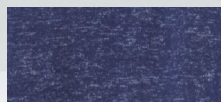
MSRP \$54.85



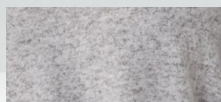
Black Heather
BLA



Espresso Heather
211



Navy Heather
NVH



Oxford Heather
OXH



Women's Layers Collection

“I cannot endure to
waste anything so
precious as autumnal
sunshine by staying in
the house.”

- **Nathaniel Hawthorne**

BOXERCRAFT
your life. your spirit.





Slip into our Dream Fleece Pullover Hoodie, and feel the dreamy softness and warmth. The scallop-shaped bottom gives this pullover a feminine look. With a lined hood, antique silver 20L grommets for the drawcord exit, and 1x1 ribbed sleeve openings, it will be a cool weather favorite.

BW5301 *Dream Fleece Pull Over Hood*

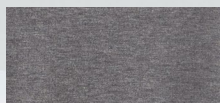
- 6.9 oz., 67% poly, 29% rayon, 4% spandex
- 2-piece, 2-ply lined hood
- scallop-shaped bottom opening

Sizes: Women's XXS - 2XL

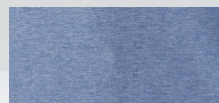
MSRP \$54.85



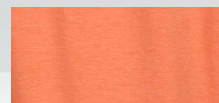
Blue Heather
BTH



Black Heather
BLA



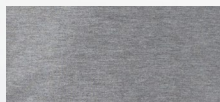
Indigo Heather
INH



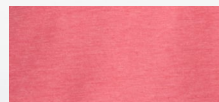
Mandarin Heather
816



Navy Heather
401



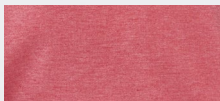
Oxford Heather
OXH



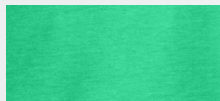
Paradise Heather
644



Purple Heather
PUH



Red Heather
RHT



Shamrock Heather
320





Dreaming of relaxing? Our Dream Fleece Pullover has a relaxed fit with a hint of stretch to make you feel as good as you look. The self-fabric collar with a half-zip placket and dropped shoulders mean you don't have to sacrifice style for comfort. Self-fabric cuffs and waistband complete the look of your new favorite fleece.

BW5205 *Dream Fleece Quarter Zip*

- 6.9 oz., 67% poly, 29% rayon, 4% spandex
- self-fabric collar, cuffs and bottom band
- zip front placket
- dropped shoulder

Sizes: Women's XXS - 2XL

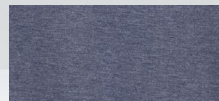
MSRP \$54.85



Black Heather
BLA



Indigo Heather
INH



Navy Heather
401



Oxford Heather
078





The Dream Fleece Full-Zip Hoodie will forever change the way you feel about this essential cool weather piece. It feels so good, so soft, from the moment you put it on that it really is like wearing a dream! Features include a 2-ply lined hood, self-fabric drawcords and metal grommets for the drawcord exit. Concealed zipper teeth. Convenient kanga pocket keeps your hands toasty warm. 1x1 rib on bottom band and sleeve cuffs.

BW5201 *Dream Fleece Full Zip Hood*

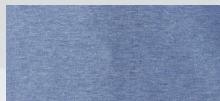
- 6.9 oz., 67% poly, 29% rayon, 4% spandex
- 2-piece, 2-ply lined hood
- kanga pocket

Sizes: Women's XXS - 2XL

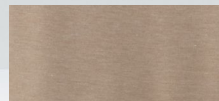
MSRP \$58.85



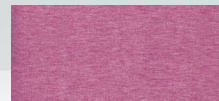
Black Heather
BLA



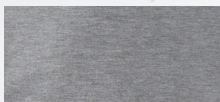
Indigo Heather
INH



Latte Heather
281



Orchid Heather
OCH



Oxford Heather
OXH





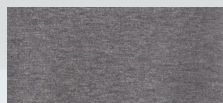
Complete your dreamy fleece feeling with the Dream Fleece Pant. Soft and warm poly-rayon construction with straight leg styling offers a flattering silhouette. 1x1 folded rib waistband with elastic set through center has a self-fabric tubular drawcord finished with knotted ends. Slash pockets with jersey pocket bags are perfect for holding valuables or warming your hands.

BW6601 *Dream Fleece Pant*

- 6.9 oz., 67% poly, 29% rayon, 4% spandex
- straight leg styling
- slash pockets with soft jersey pocket bags

Sizes: Women's XXS - 2XL

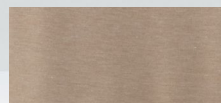
MSRP \$44.85



Black Heather
BLA



Indigo Heather
INH



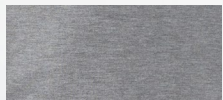
Latte Heather
281



Navy Heather
401



Orchid Heather
OCH



Oxford Heather
OXH



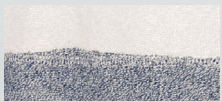


L04 *Cozy Contrast Pullover*

- 8.6 oz., 52% cotton, 48% polyester loop Terry
- self neck band, sleeve cuffs and bottom band
- raglan sleeves
- self sleeve stripes
- kangaroo pocket
- contrast pocket, sleeves and neckband

Sizes: Women's XS - 3XL

MSRP \$24.85



Denim/
Oatmeal
DOA



Garnet/
Oatmeal
GRO



Grey/
Oatmeal
GYO





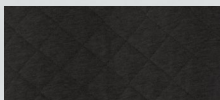
Bye-bye boring sweatshirt. Hello Quilted Crew! The all-over diamond quilting not only looks stylish, it also adds plenty of warmth. Raglan sleeves help you move more freely, while the tonal elbow patches show off a retro vibe. Rib knit at crewneck, cuffs and bottom hem. Layered or not, this is the pullover to call on again and again.

R08 *Quilted Crew*

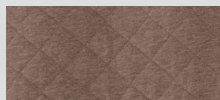
- 4.1 oz., 60% cotton, 40% poly jersey; 100% poly fill
- sweatshirt/jersey hybrid
- quilting adds style and warmth

Sizes: Women's XXS - 2XL

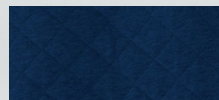
MSRP \$59.85



Black
BLK



Espresso
210



Indigo
IND



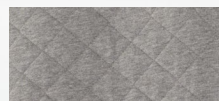
Mandarin
815



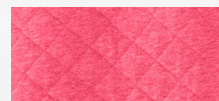
Natural
NAT



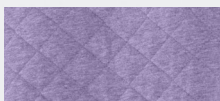
Olive
OLV



Oxford
OXF



Paradise
643



Wisteria
565



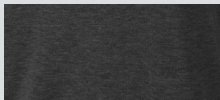


V03 *Women's Rally Lace-Up Pullover*

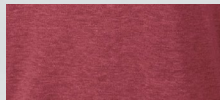
- 6.5 oz., 60% cotton, 40% polyester; enzyme and stone washed fleece
- rib neckband, sleeve cuffs, and bottom band
- forwarded side seam
- lace up detail on left side

Sizes: Women's XS - 3XL

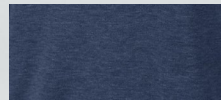
MSRP \$32.85



Charcoal
CHA



Garnet
GAR



Navy
NAV



Oxford
OXF





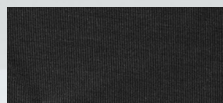
It's time to Rally. We're talking about a corduroy knit pullover with lived-in softness from day one. With a special enzyme and stone wash process, our essential solid crew rivals any vintage sweatshirt. Holds shape wash after wash with rib knitting at neck, cuffs and bottom band.

D02 *Rally Corduroy Crew*

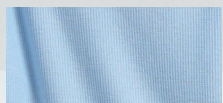
- 8.3 oz., 60% cotton, 40% poly corduroy Knit
- enzyme and stone washed for lived-in comfort
- rib knit at neck, cuffs and bottom band

Sizes: Adult XS - 3XL

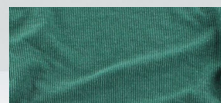
MSRP \$48.85



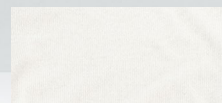
Black
BLK



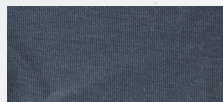
Carolina Blue
CAB



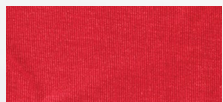
Hunter
HUN



Natural
NAT



Navy
NAV



Red
RED





Your everyday sweatshirt just got a whole lot better! This Lace-Up Pullover is made of super-soft French terry to feel great and hold its shape, and the lace-up front placket with gold eyelets means it's a lot cuter than a basic sweatshirt. The topstitched mid-chest seam adds clean lines to the look. The self-fabric drawcord is perfect for adjustability.

BW5401 *Women's Lace Up Pullover*

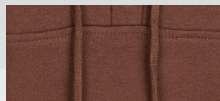
- 8.3 oz., 70% cotton, 30% polyester
- top-stitched mid-chest seam creates clean lines
- self-fabric drawcord for adjustability

Sizes: Women's XXS - 2XL

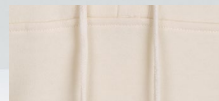
MSRP \$59.85



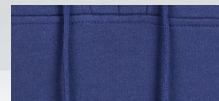
Black
001



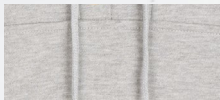
Espresso
210



Natural
103



Navy
400



Oxford Heather
078



Pacific Blue
460



Paradise
643





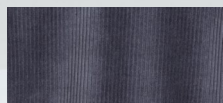
Give your cozy weekend wardrobe a modern update with our Manchester Quarter Zip Pullover. Soft, corded cotton-poly fabric has a velour texture with a hint of built-in stretch for added comfort. A deep gold-tone zipper is accented with a retro ring zipper pull. Banded bottom and cuffs. Slash welt pockets complete the versatility.

BW5203 *Women's Manchester Quarter Zip*

- 8.3 oz., 60% cotton, 40% polyester fleece
- rib waistband with self drawcord
- set on front pockets

Sizes: Women's XXS - 2XL

MSRP \$88.85



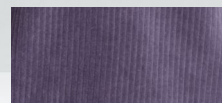
Castlerock
085



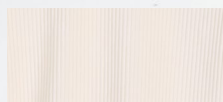
Espresso
210



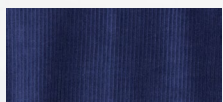
Moss
313



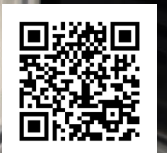
Mystic
510



Natural
103



Navy
400





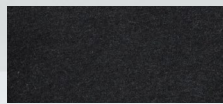
Slip into the all-around performing comfort of the Travel V-Neck Pullover. It's casual, warm, soft and oh-so comfy! With raglan sleeves, ribbed cuffs and bottom band and raw-edge seams, this will be a favorite fleece option wherever your days take you. With flattering body contour front seams and a self-fabric back moon.

BW5402 *Women's Travel V-Neck Pullover*

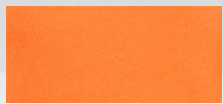
- 8.3 oz., 60% cotton, 40% polyester fleece
- raglan sleeves
- ribbed cuffs and bottom band with raw edge seams

Sizes: Women's XXS - 2XL

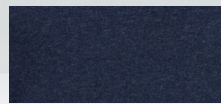
MSRP \$48.85



Charcoal
090



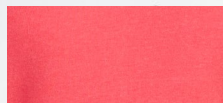
Mandarin
815



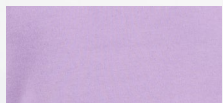
Navy
400



Oxford Heather
078



Paradise
643



Wisteria
565





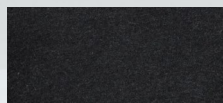
Finish off your cozy fleece style with the Travel Crop Pant. Ultra-soft and warm cotton-poly fleece has a ribbed waistband with self-drawcord and set-on front pockets. Reverse face side panels add to the comfy, casual appeal.

BW6202 *Women's Travel Crop Pant*

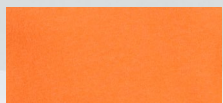
- 8.3 oz., 60% cotton, 40% polyester fleece
- rib waistband with self drawcord
- set on front pockets

Sizes: Women's XXS - 2XL

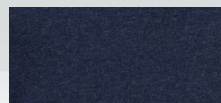
MSRP \$44.85



Charcoal
090



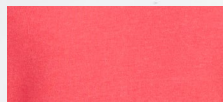
Mandarin
815



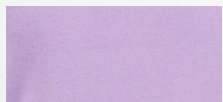
Navy
400



Oxford Heather
078



Paradise
643



Wisteria
565



NEW



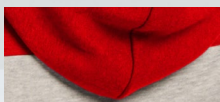
Raise your hoodie game by adding this crazy-cute cropped style to your rotation. The cozy warmth of fleece will quickly make it a fall favorite. The ribbed cuffs and waistband add to the design and the durability.

BW5404 *Women's Fleece Cropped Hood*

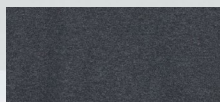
- 7.1 oz., 50% cotton, 50% polyester brushed fleece
- 2-ply self-fabric hood
- top yoke panel in solid and contrasting colors
- rib cuffs and bottom band
- BXC woven logo label at wearers left side seam

Sizes: Women's XXS - 2XL

MSRP \$42.85



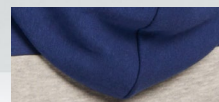
Brick Red
Oxford Heather
965



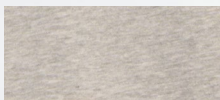
Charcoal
Heather
091



Mandarin
815



Navy
Oxford Heather
914



Oxford
Heather
078



White
Oxford Heather
978



Shamrock
320



True Royal
425



NEW



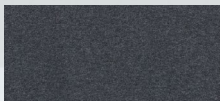
Designed for comfort and versatility, these fleece shorts have a self-fabric covered elastic waistband for comfort and a self-fabric drawstring for adjustability. You'll love the look of the side seam V-notches, and the side pockets are great for storing light items.

BW6502 *Women's Fleece Short*

- 7.1 oz., 50% cotton, 50% polyester brushed fleece
- 3 1/2" inseam; high waist fit
- self-fabric covered elastic waistband; self-fabric drawstring
- side entry pockets; sideseam v-notches
- BXC woven logo label at wearers left side seam

Sizes: Women's XXS - 2XL

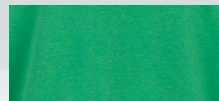
MSRP \$28.85



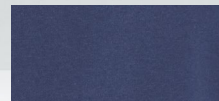
Charcoal Heather
091



Oxford Heather
078



Shamrock
320



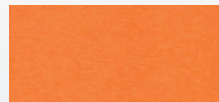
Navy
400



True Royal
425



Brick Red
650



Mandarin
815





Our Fleece Out Crew soft-washed, reverse fleece pullover feels and looks so good, you'll never want to take it off! The fleece typically seen on the inside is sewn on the outside, elevating the snuggle factor. Retains shape with rib knitting at the crewneck, cuffs and vented bottom hem. It's a perfect time to "Fleece Out"!

K01S Reverse Fleece Out Crew

- 6.5 oz., 60% cotton, 40% poly reverse fleece
- snuggly soft on the outside
- boxy fit with bottom side vents

Sizes: Women's XXS - 2XL

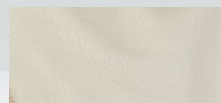
MSRP \$44.85



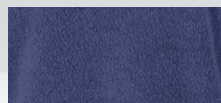
Charcoal
CHA



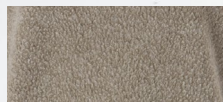
Mandarin
815



Natural
NAT



Navy
NAV



Olive
OLV



Orchid
ORC



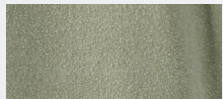
Purple
PRP



Red
RED



Royal
ROY



Sage
SAG



(K01P) Navy Tie Dye
NTD





Sometimes it's better to go in reverse. That's certainly the case in our reverse fleece short. A comfy seam-folded waistband stays put and adjusts, thanks to a tubular braided drawcord. Find handy slash pockets, plus an old-school coin pocket. Scalloped shaping and raw edges give the leg openings a bit more oomph.

K02S *Reverse Fleece Out Short*

- 6.5 oz., 60% cotton, 40% poly reverse fleece
- snugly soft on the outside
- seam-folded waist with braided drawcord

Sizes: Women's XXS - 2XL

MSRP \$29.85



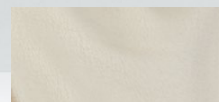
Charcoal
CHA



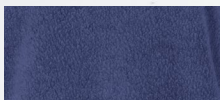
Blush
BLS



Mandarin
815



Natural
NAT



Navy
NAV



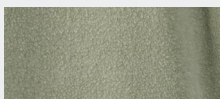
Purple
505



True Red
660



True Royal
425



Sage
SAG



NEW



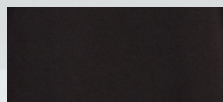
Oversized, with raglan sleeves, this terry crewneck pullover was made for comfort. Plenty of room for layering, but just as cute on its own with the hi/low hem. Ribbed cuffs and waistband ensure it holds its shape wear after wear.

BW3101 *Harlow Oversized Terry Pullover*

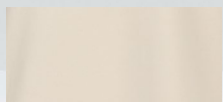
- 8.3 oz., 70% cotton, 30% poly French terry
- hi/low hem; raglan sleeves
- crew neckline; rib cuffs and bottom band
- cover seamed armholes and neckline
- BXC woven logo label at wearers left side seam

Sizes: Women's XXS - 2XL

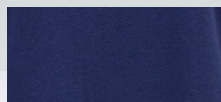
MSRP \$42.85



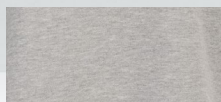
Charcoal Heather
091



Natural
103



Navy Heather
401



Oxford Heather
078



NEW



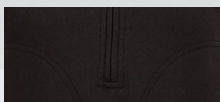
It's hard to resist the cropped fit of this sleeveless, half-zip pullover. Layered or worn alone, the ribbed shoulder panels and stand-up collar are designed to enhance the look. With side vents for extra comfort and front zippered pockets to stow your stuff.

BW2407 *Women's Sleeveless Terry Half Zip Pullover*

- 8 oz., 70% cotton, 30% poly French terry
- double welt placket
- half-zip with stand-up rib collar
- side vents; front zip pockets
- BXC woven logo label at wearers left side seam

Sizes: Women's XXS - 2XL

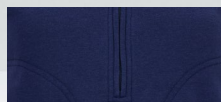
MSRP \$44.85



Charcoal Heather
091



Natural
103



Navy Heather
401



Oxford Heather
078





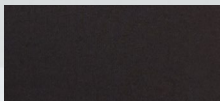
Comfort? Check. Cute? We've got you. Adventure? You decide. These terry safari shorts will definitely be a regular in your shorts rotation. With a ribbed elastic waistband for comfort and a dyed-to-match twill drawcord for adjustability. The applied pockets with ribbed trim raise the style level even more.

BW6503 *Women's French Terry Safari Short*

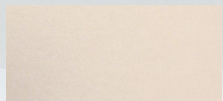
- 8 oz., 70% cotton, 30% poly French terry
- 3" inseam
- rib elastic waistband; dyed to match twill drawcord
- self-fabric applied pockets with rib trim
- BXC woven logo label at wearers left side seam

Sizes: Women's XS - 2XL

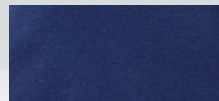
MSRP \$32.85



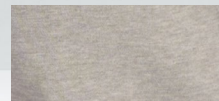
Charcoal Heather
091



Natural
103



Navy Heather
401



Oxford Heather
078



NEW



Getting colder? No worries! Stay warm in this Alpine fleece jacket with forward princess seams for a streamlined and flattering fit. A concealed full-zip front and a self-fabric collar, cuffs and waistband add to the look. The thumbhole cuffs will keep the sleeves in place and the cold out.

BW5207 *Women's Alpine Fleece Full Zip*

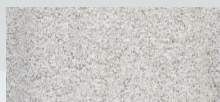
- 7 oz., 100% polyester double knit fleece
- self-fabric collar, cuffs and bottom band
- forward princess seams
- concealed full zip front
- contrast cover seaming; cuff thumbholes

Sizes: Women's XXS - 2XL

MSRP \$58.85



Black Heather
010



Oxford Heather
078



Navy Heather
401





Women's Outerwear Collection

“20 years from now
you will be more
disappointed by the
things that you didn't
do than by the ones you
did do. So throw off the
bowlines. Sail away from
the safe harbor. Catch
the trade winds
in your sails.
Explore. Dream.
Discover.”
- **Mark Twain**

BOXERCRAFT
your life. your spirit.™



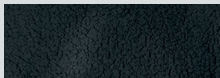
So cozy and warm, the Everest Half-Zip Pullover looks as good as it feels. Matte tonal bindings complement the poly Everest fleece body. Adjusts to your perfect fit thanks to the foldover elasticized bottom opening for a snuggler fit and an inner drawcord that provides added adjustability to keep the cold out. Plus, pockets!

BW8501 *Everest Half Zip*

- 8.4 oz, 100% poly Everest fleece
- matte tonal bindings for standout style
- foldover elasticized bottom and an inner drawcord for a custom fit

Sizes: Women's XXS - 2XL

MSRP \$58.85



Black
Black Trim
BLK



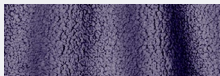
Espresso
Black Trim
210



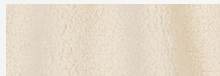
Indigo
Indigo Trim
IND



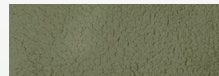
Moss
Black Trim
313



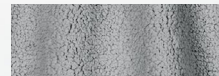
Mystic
Black Trim
510



Natural
Black Trim
NAB



Olive
Olive Trim
OLV



Oxford
Charcoal Trim
007





FZ01 *Fuzzy Fleece Pullover*

- top/sleeves: 8.5 oz., 100% polyester stripe fuzzy fleece
- bottom: 7.4 oz. 100% polyester fuzzy fleece
- 1' 1/4" grosgrain placket with gold snaps
- contrasting collar, upper body and sleeves
- side seam pockets
- sleeve and bottom opening finished w/jersey bindings
- unisex design

Sizes: Women's XS - 3XL

MSRP \$34.85



Camel Stripe/
Natural
CSN



Navy Stripe/
Natural
NSN



Oxford Stripe/
Natural
OXN





Get that warm bear hug feeling every time you throw on this Fuzzy Fleece Crew. Rib knit cuffs keep out chilly drafts while giving you “pull power” over your hands when desired. With a rib knit crewneck, a slight hi-low hem and side vents, there’s no limit to when (and where) you can have that oh-so-cozy sensation.

FZ03 *Fuzzy Fleece Crew*

- 7.3 oz., 100% poly fuzzy fleece
- cozy without feeling bulky
- rib knit cuffs

Sizes: Women’s XS - 3XL
Youth YM - YL

MSRP \$29.85 - Women’s
\$24.85 - Youth



Frosty Grey
FGR





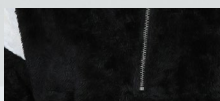
If you're a creature of comfort, especially on cold, gloomy days, you'll quickly appreciate our Remy Fuzzy Fleece Pullover. Hibernation not required. You'll want to be seen in this one. Check out the wide contrast arm bands and the retro ring pull on the quarter zipper. And your hands will love our jersey-lined muff pockets. Get that oh-so-cozy sensation wherever you go.

FZ04 *Remy Fuzzy Fleece Pullover*

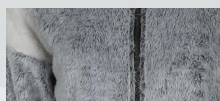
- 7.3 oz., 100% poly fuzzy fleece
- cozy without feeling bulky
- quarter zip with retro ring pull

Sizes: Women's XS - 3XL

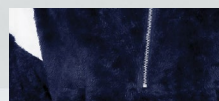
MSRP \$34.85



Black/
Natural
BNA



Frosty Grey/
Natural
FRN



Navy/
Natural
NVN





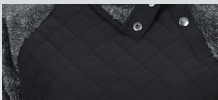
Who says a super-plush fleece pullover can't have swag? Nobody at Boxercraft. Diamond quilted woven fabric at front yoke and inside sleeves not only looks stylish, it adds warmth. The asymmetrical snap quarter placket makes a current statement unsnapped or snapped to the tippy top. Contrast trim adds form and function. Of course, the fuzzy fleece acts like your own body heater, and the jersey-lined muff pocket rivals toasty mittens.

FZ06 *Quilted Fuzzy Fleece Pullover*

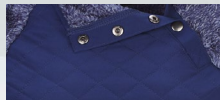
- 7.3 oz., poly fuzzy fleece; 2.1 oz., poly quilted woven
- chill-busting comfort
- asymmetrical snaps and quilted contrast

Sizes: Women's XS - 3XL

MSRP \$34.85



Black Pepper/
Black
BPB



Navy Pepper/
Navy
NPB





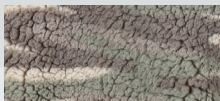
How can plush Sherpa fleece make you feel? Toasty warm. Really comfortable. Adventure ready. Styled with a half-moon back yoke and twill taping inside neckline. Zip to the top or keep it relaxed with the collar open. However you wear it (or layer it), you'll be glad to have this Sherpa Quarter-Zip Pullover handy during cold season.

Q10 Sherpa Quarter Zip Pullover

- 8.9 oz., 100% poly Sherpa
- chill-busting warmth
- garment dyed for unique character; colors may vary

Sizes: Women's XS - 3XL

MSRP \$34.85



Desert Camo
DCM



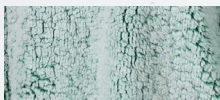
Frosty Chocolate
FCH



Frost Garnet
FGN



Frosty Grey
FGR



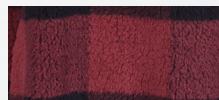
Frosty Hunter
FHU



Frosty Navy
FNV



Navy/Frosty Grey
NFG



Garnet Black Plaid
GBF



Granite/Natural
GNP





Be adventure ready and stay toasty warm via our Sherpa Full-Zip Jacket. Details matter, like handwarmer pockets, cinch drawcord bottom, elasticized cuffs and half moon facing at back neck. Zip to the top or keep it relaxed with the collar open. However you wear it, you'll be glad to have this plush Sherpa fleece jacket handy during cold season.

Q12 *Women's Sherpa Full-Zip Jacket*

- 8.9 oz., 100% poly Sherpa
- chill-busting warmth
- garment dyed for unique character; colors may vary

Sizes: Women's XS - 3XL

MSRP \$34.85



Frosty Grey
FGR



Natural
NAT





Our Adventure Jacket lives up to its name while it keeps you ready for all of life's many adventures. The quilted poly shell has woven arms for stretchable comfort and flexibility, while delivering lightweight warmth and protection. Features a zippered chest pocket, and side-seam pockets with lightweight pocket bags.

BW8101 *Women's Adventure Jacket*

- body: 1.5 oz., 100% poly
- woven sleeves: 11.2 oz., 68% rayon, 28% chinlon, 4% spandex
- fill: 3 oz., 100% poly
- 3-ply body with fiber fill
- zippered chest pocket
- side-seam pockets

Sizes: Women's XXS - 2XL

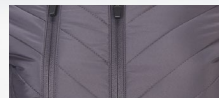
MSRP \$88.85



Black
BLK



Navy
NAV



Slate
SLT





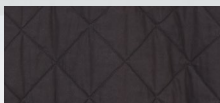
The right jacket makes all the difference. Our Quilted Market Jacket keeps you toasty while looking stylish. A woven outer has 100% poly fill for extra warmth. Features a rolled sleeve cuff that is secured with a tack, antique brass snaps, and welt pockets with soft jersey pocket bags to warm the hands or hold essentials.

BW8102 *Quilted Market Jacket*

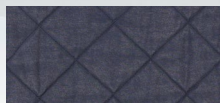
- 3.4 oz., Woven fabric
- (navy, pacific blue, & paradise) 70% cotton, 30% poly
- (black) 100% cotton; Fill: 100% poly
- self-fabric binding and twill back neck tape
- rolled sleeve cuff secured with a tack

Sizes: Women's XXS - 2XL

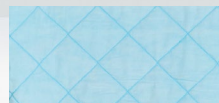
MSRP \$84.85



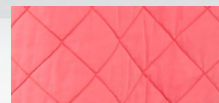
Black
BLK



Navy
NAV



Pacific Blue
460



Paradise
643



Women's Active Collection

“Sometimes the smallest step in the right direction ends up being the biggest step of your life. Tiptoe if you must but take a step.”
- **Naeem Callaway**

BOXERCRAFT
your life. your spirit.





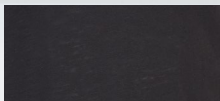
Get the support you need with the Support Your Team Bra. This sporty style can be worn alone or underneath other tops or jackets to help make the most of every workout. Cotton-spandex construction is breathable with enough stretch to move with you. Racerback styling is super comfortable and supportive.

S101 *Support Your Team Bra*

- 6.5 oz., 90% cotton, 10% spandex
- versatile sports bra styling
- racerback detailing

Sizes: Women's S - XL
Youth YS - YL

MSRP \$16.85 - Women's
\$14.85 - Youth



Black
BLK





Whether worn underneath your layering or as a workout top, there's a lot to love about the Sweetheart Sports Bra. The design is both supportive and flattering with overstitched front contour seams and neck and armhole seams. Racerback styling provides an excellent range of motion for all of your activities, while the sweetheart neckline is flattering for most body types. Encased elastic band is comfortable and helps prevent the bra from riding up.

BW2701 *Sweetheart Sports Bra*

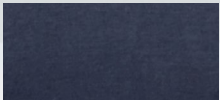
- 8 oz., 91% cotton, 9% spandex
- overstitched front contour, neck and armhole seams
- racerback styling

Sizes: Women's XXS - 2XL

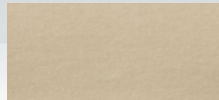
MSRP \$28.85



Black
001



Castlerock
085



Latte
280



Mystic
510



Navy
400





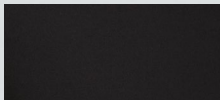
These woven shorts have added stretch for comfort and a perfect fit. The wide, high waistband and forward-set side seams are super flattering, and the waistband has a back interior pocket to keep light items secure. You'll also love the attached liner shorts with a built-in cell phone pocket.

BW6103 *Stretch Woven Lined Short*

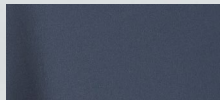
- 3.4 oz., 90% poly, 10% spandex; Lining: 100% polyester jersey
- wide high waistband with center back interior pocket
- interior attached spandex liner short w/cell phone pocket

Sizes: Women's XXS - 2XL

MSRP \$34.85



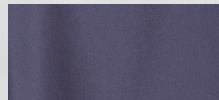
Black
001



Castlerock
085



Indigo
430



Mystic
510





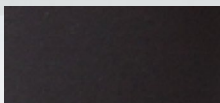
Of course, leggings are a necessity, but they're not all built the same. Ours are smoothly knit and packed with plenty of stretch, but not a struggle to pull on. The elasticized waist falls mid-rise, and not jacked up above your waist like many others. Most importantly, you'll Love'em Longer with full length and versatile enough to wear with anything.

S08 *Love 'Em Longer Legging*

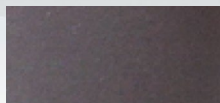
- 6.5 oz., 90% cotton, 10% spandex
- versatile sports bra styling
- racerback detailing

Sizes: Women's XS - 2XL
Youth YS - YL

MSRP \$22.85 - Women's
\$18.85 - Youth



Black
BLK



Charcoal
CHA



Navy
NAV





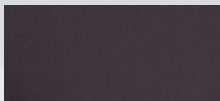
Live in them. Play in them. Love them. The Luna Legging proves that with the right leggings, you can do most anything! The poly-spandex construction moves with you and gives plenty of comfortable support. With a front waistband pocket, seamed panels and mesh side-panel pocket for added convenience.

BW6301 *Luna Legging*

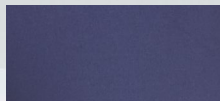
- 6.8 oz., 86% poly, 14% spandex
- front waistband pocket with lightweight pocket bag
- mesh side panel pocket

Sizes: Women's XXS - 2XL

MSRP \$48.85



Black
BLK



Navy
NAV



Slate
SLH





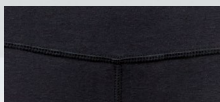
The name says it all: you will adore the level of support and comfort that the Adore Leggings offer to your active lifestyle. Designed with overstitched seams, the leggings have a wide high waistband and a contoured sweetheart back waistband that is both extra comfortable and flattering. An exterior side pocket is perfect for holding your phone during long walks or jogs. With a 7/8 length.

BW6302 *Adore Me Legging*

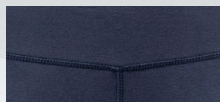
- 6.5 oz., 91% cotton, 9% spandex
- wide, high-waisted band with contoured sweetheart style back
- one exterior side pocket

Sizes: Women's XXS - 2XL

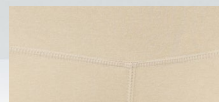
MSRP \$38.85



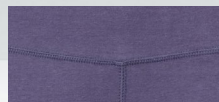
Black
001



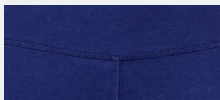
Castlerock
085



Latte
280



Mystic
510



Navy
400





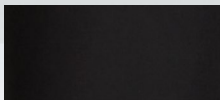
Almost too cute for jogging, there's much to love about our woven, stretch Sport Jogger! The ankle-length design has a wide drawstring waistband for added style, comfort and adjustability. Inner elastic pulls at the leg openings keep them right where you want them, and you can use the side pockets to stow your stuff away.

BW6201 *Women's Sport Jogger*

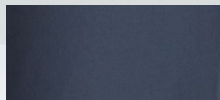
- 3.4 oz., 90% poly, 10% spandex; stretch woven
- wide waistband with drawcord
- inner elastic pull at leg opening
- side entry pockets
- ankle length

Sizes: Women's XXS - 2XL

MSRP \$44.85



Black
001



Castlerock
085



Indigo
430



Mystic
510





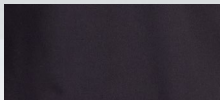
Designed to enhance your active lifestyle, the Flex Quarter-Zip Pullover will be a favorite. The stretch woven design is soft to the touch, with built-in stretch that keeps it flexible and comfortable with every move. Self-fabric quarter-zip placket makes it easy to slip on and off. With sleeve thumbholes and front pockets set at the waist.

BW5202 *Women's Flex Quarter Zip*

- 4.8 oz., 95% poly, 5% spandex
- stretch woven
- self-fabric quarter zip placket
- sleeve thumbholes
- front pocket set at waist

Sizes: Women's XXS - 2XL

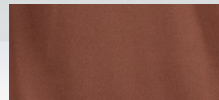
MSRP \$49.85



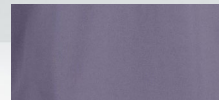
Black
001



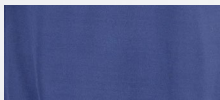
Castlerock
085



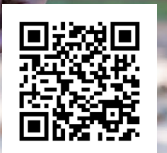
Espresso
210

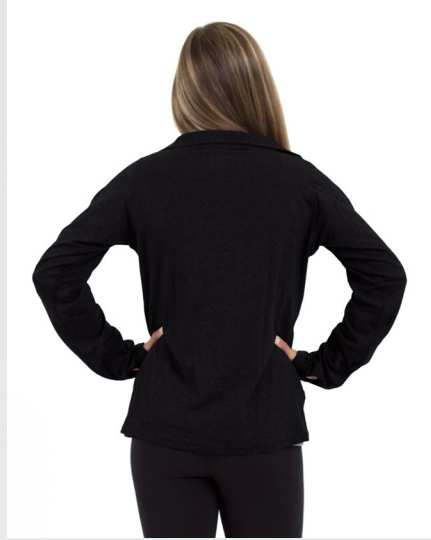


Mystic
510



Navy
400





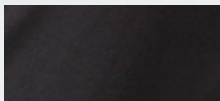
Morning runs are a treat in our cute and comfy activewear. Made to fit an active lifestyle, this sporty full-zip jacket can get you through those workouts that require greeting the crisp morning breeze. Made from cotton and spandex fabric blends, this jacket is designed with a slightly snug fit that has the ability to stretch accordingly for activities. Pair it with leggings, sneakers, and a tee/tank to achieve a sporty, active look.

\$89 Practice Jacket

- 6.5 oz., 90% cotton, 10% spandex
- cadet collar
- full front zipper
- kangaroo pocket

Sizes: Women's XS - 2XL
Youth YS - YL

MSRP \$42.85 - Women's
\$36.85 - Youth



Black
BLK





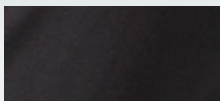
After yoga class. During a breezy 5k run. On the city streets. Our Studio Jacket is always ready to go. Made from a moisture-wicking performance fabric that moves with you. Added ventilation via mesh inserts at back yoke and sleeves. Super functional with two zippered pockets, full-zip front and thumbhole cuffs.

S95 *Studio Jacket*

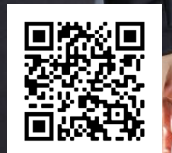
- 6.8 oz., 88% poly, 12% spandex body
- 5.8 oz., 90% poly, 10% spandex side and back mesh inserts
- stretches with your every move
- body-mapped ventilation

Sizes: Women's XS - 2XL
Youth YS - YL

MSRP \$48.85 - Women's
\$44.85 - Youth



Black
BLK





Our Flannel Collection

For over 35 years, our Flannel lounge pants have been the foundation of our brand. We continue to elevate our Flannel program with new colors and patterns. Every pattern and color is woven from a 100% cotton “super” yarn. A high-twist yarn that provides increased strength and durability that stands up to the heavy brushing we use to achieve the amazing soft hand feel. Super yarn allows for better color saturation, delivering vibrancy and longevity to the pattern and it is pre-shrunk to ensure the meticulously crafted fit remains true.

Our cozy, comfortable loungewear is always a welcomed addition to your casual rotation. Our Haley and Harley Flannel Pant is no exception. For lazy mornings sleeping in or cuddling up to binge your favorite shows, these pants are a perfect choice. And yes, they have pockets!

BOXERCRAFT
your life. your spirit.™

Cozy, comfortable loungewear is always a welcome addition to your casual rotation, and our Haley Flannel Pant is no exception. Lazy mornings sleeping in or cuddling up to binge your favorite shows, these pants are a perfect choice. They feature double-brushed softness and a folded waistband with twill outer drawcord. And yes, they have pockets!

BW6620 Women's Haley Flannel Pant

- 4.3 oz., 100% cotton flannel
- folded waistband
- twill outer drawcord

Sizes: Women's XXS - 2XL

MSRP \$29.85

 Green Charcoal Buffalo Check BCG	 Black Gold Plaid BGO	 Paradise Buffalo Check BP1	 Autumn Buffalo Check BP2	 Black White Buffalo Check BWF	 Black White Plaid BWP
 Charcoal Black Buffalo Check CKB	 Navy Field Day FD1	 Kelly Field Day FD2	 Royal Field Day FD3	 Orange Field Day FD4	 Crimson Field Day FD5
 Green White Plaid GWP	 Kingston Plaid H04	 Heritage Black Plaid HEB	 Heritage Hunter Plaid HEH	 Heritage Maroon Plaid HEM	 Heritage Garnet Plaid HGP
 Heritage Carolina Blue Plaid HNC	 Heritage Navy Orange Plaid HOG	 Burnt Orange Kingston Plaid KN1	 Red Navy Kingston Plaid KN2	 Oxford Navy Kingston Plaid KN3	 Oxford Royal Kingston Plaid KN4
 Orange Indigo Metro Plaid MP1	 Maroon Plaid MRP	 Navy Columbia Plaid NCP	 Navy Silver Plaid NSP	 Navy Gold Plaid NGP	 Purple White Plaid PWP
 Red Black Buffalo Plaid RBB	 Royal Buffalo Plaid RKB	 Royal Silver Plaid RSV	 Red White Plaid RWP	 Lavender Sophia Plaid SP1	 Pink Sophia Plaid SP4
 Scottish Tartan STP	 Oxford Red Tomboy Plaid TB1	 Charcoal Lavender Tomboy Plaid TB2	 Navy Pink Tomboy Plaid TB3		



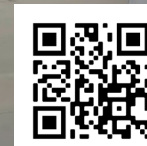
Loungewear is always in season! From lazy weekends in to relaxing after work or school, our Harley Flannel Pant is the one you'll reach for time after time. These pants will keep you warm and comfortable with double-brushed cotton softness. Neatly finished with a self-folded waistband (with inner drawcord), hidden button-close fly, and yes, they have pockets!

BM6624 Men's Harley Flannel Pant

- 4.3 oz., 100% cotton flannel
- self-folded waistband
- functional fly

Sizes: XXS - 3XL

MSRP \$29.85





Outdoor activities, casual days out or just lounging around are all options for these comfortable cotton flannel joggers. The interior-drawcord style is easy to wear, with a self-fabric fold over elastic waistband. The self-elastic leg openings keep them in place, and the wide-seam front pockets are great for keeping your belongings close.

BM6625 Adult Flannel Jogger

- 4.3 oz., 100% cotton flannel
- self-fabric fold over elastic waistband; interior drawcord
- side-seam front pockets and self elastic leg openings

Sizes: Adult XXS - 2XL

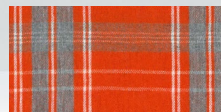
MSRP \$29.85



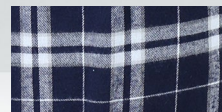
Green White
Plaid
GWP



Heritage Black
Plaid
HEB



Orange
Kingston Plaid
KN1



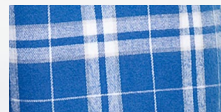
Navy Silver Plaid
NSP



Purple White
Plaid
PWP



Red Black
Buffalo Plaid
RBB



Royal Silver
Plaid
RSV



Scottish
Tartan
STP



NEW



Laid-back comfort is what these poly flannel lounge pants are all about. Stylish enough for your most casual days out, and comfortable enough for your most relaxed days in. A simple seamed waistband and a turnback finish at the leg openings complete the look.

BY6624 Youth Poly Flannel Pant

- 4.3 oz.,100% polyester
- no drawcord; seamed waistband
- turnback finish at leg opening; inner side seam pockets

Sizes: Youth YS - YXL

MSRP \$26.85

Special Note: Recommend Embroidery or Heat Transfer Embellishments



Black Gold Plaid
BGO



Black White Plaid
BWP



Green White Plaid
GWP



Orange Kingston Plaid
KNI



Navy Columbia Plaid
NCP



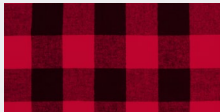
Navy Gold Plaid
NGP



Navy Silver Plaid
NSP



Purple White Plaid
PWP



Red Black Buffalo Plaid
RBB



Royal Silver Plaid
RSV



Red White Plaid
RWP



Scottish Tartan
STP





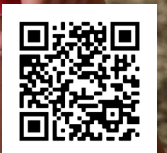
Your go-to for relaxing in comfort, our Flannel Short has feminine details that set it apart from the others. The 2-ply waistband has a satin drawcord, with satin piping at the leg openings. Pure comfort that's completely cute.

BW6501 Women's Flannel Short

- 4.3 oz., 100% cotton flannel
- 2-ply waistband with elastic
- tonal 3/8" cut and sew satin drawcord, and satin piping at leg opening

Sizes: Women's XXS - 2XL

MSRP \$22.85





Soft, breathable, and brushed on both sides for comfort and warmth, our 100% Cotton Flannel Boxers are a daily gift to yourself. Classic-fit boxers have a full elasticized waist that never pinches or twists. Includes functional hidden button-close fly.

BM6701 Men's Flannel Short

- 4.3 oz., 100% cotton flannel
- seamed waistband
- functional fly
- turnback finish at leg opening

Sizes: XS - 3XL

MSRP \$22.85



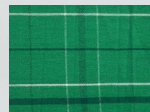
Black White
Plaid
BWP



Charcoal Black
Buffalo Plaid
CKB



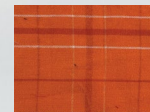
Navy
Field Day
FD1



Kelly
Field Day
FD2



Royal
Field Day
FD3



Orange
Field Day
FD4



Crimson
Field Day
FD5



Green White
Plaid
GWP



Orange
Kingston Plaid
KN1



Red Navy
Kingston Plaid
KN2



Navy Columbia
Plaid
NCP



Navy Gold
Plaid
NGP



Navy Silver
Plaid
NSP



Purple
White Plaid
PWP



Red Black
Buffalo Plaid
RBB



Royal
Silver Plaid
RSV



Red White
Plaid
RWP



Scottish
Tartan
STP





Men's Essentials Collection

“Sometimes, the most productive thing that you can do is to step outside and do nothing... relax and enjoy nature.”

- Melanie Charlene

BOXERCRAFT

your life. your spirit.



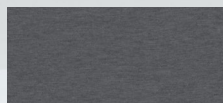
So soft, so stretchy, so comfortable. Our Tri-Blend Tee combines the best elements of three different fibers to create one-of-a-kind, lived-in comfort that you'll reach for over and over. The folded rib band and back neck tape offer added durability. Made of a super soft poly, cotton, rayon knit that resists wrinkles while maintaining its shape.

BM2102 *Men's Tri Blend Tee*

- 4.3 oz., 50% poly, 38% cotton, 12% rayon
- folded rib band
- back neck tape

Sizes: XXS - 3XL

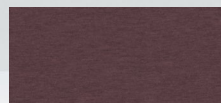
MSRP \$18.85



Charcoal Heather
CHH



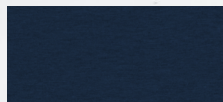
Hunter Heather
HUH



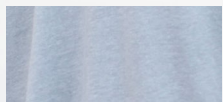
Maroon Heather
MRH



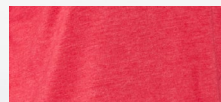
Mint Heather
MNH



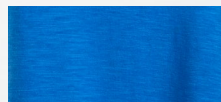
Navy Heather
NVH



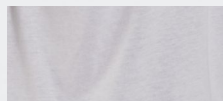
Oxford Heather
OXH



Red Heather
RHT



Royal Heather
RYH



White Heather
WHT





Easily one of your new favorites, our Essential Crewneck Tee is redefining the go-anywhere tee. Double-brushed cotton-poly construction is super soft, resists wrinkles and moves with you. With a folded neck band and back neck tape for added structure and durability. Turn-back at sleeve openings and bottom complete the look.

BM2103 Men's Crewneck Tee

- 4.28 oz., 50% cotton, 50% poly
- folded neck band
- self-fabric back neck tape

Sizes: XXS - 3XL

MSRP \$18.85

			
	Amber Gold 708		
			
Black 001	Brick Red 650		
			
Burnt Orange 850	Charcoal Heather 091	Collegiate Blue 458	Dark Green 316
			
Denim 418	Mandarin 815	Maroon 610	Navy 400
			
Oxford Heather 078	Paradise 643	Purple 505	Shamrock 320
			
True Red 660	True Royal 425	White 100	White Heather 105





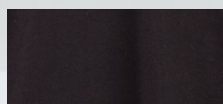
A modern take on the everyday tee, this High V-Tee combines the best of comfort and updated style. Soft double-brushed cotton-poly jersey is finished with a folded neck band and contrasting self back neck tape. The round bottom drop tail makes it ideal for wearing untucked. Turn backs at bottom and sleeve openings add visual interest.

BM2204 *Men's High V-Tee*

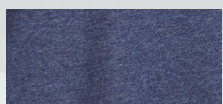
- 4.28 oz., 50% cotton, 50% poly double brushed jersey
- folded neck band
- contrasting self back neck tape

Sizes: XXS - 3XL

MSRP \$24.85



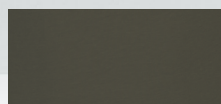
Black
001



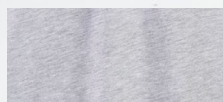
Denim
418



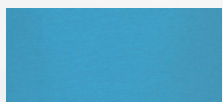
Mandarin
815



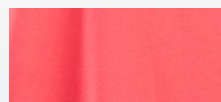
Olive
310



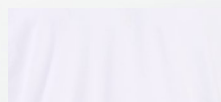
Oxford Heather
078



Pacific Blue
460



Paradise
643



White
100



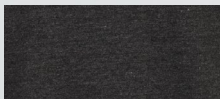


BU3102 *Essential Long Sleeve Tee*

- 4.75 oz., 60% cotton, 40% pre-shrunk polyester
- unisex styling
- set-in sleeves
- rib-knit collar

Sizes: Adult XXS - 3XL

MSRP \$26.85



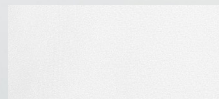
Charcoal Heather
091



Navy
400



Oxford Heather
078



White
100



White Heather
105





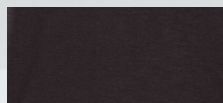
Every guy needs a comfortable Henley in their closet, and this one more than delivers. Slub jersey knit is super soft with a great look and texture. The three-button placket opens to a contrasting oxford heather, and it also has a contrasting self-fabric back neck tape. Our Henley is finished with a self-fabric half-moon back neck and a round bottom hem.

BM3101 *Men's Henley Long Sleeve*

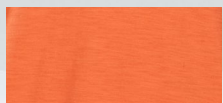
- 4.28 oz., 60% cotton, 40% poly slub jersey
- self-fabric placket and collar
- contrasting heather self-fabric back neck tape

Sizes: XXS - 3XL

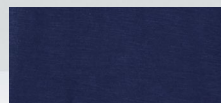
MSRP \$32.85



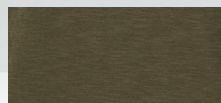
Black
001



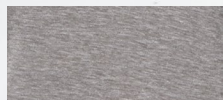
Mandarin
815



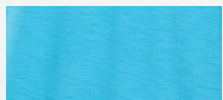
Navy
400



Olive
310



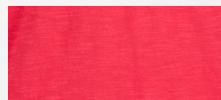
Oxford Heather
078



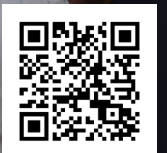
Pacific Blue
460



Royal
425



True Red
660





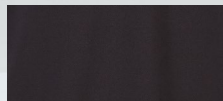
Every guy needs an exceptional polo to add to their collection, and this is the one. The piqué knit goes the distance with durability, comfort and a sporty look. Our polo is finished with a self-fabric color, chest pocket, 22L buttons and side vents on the bottom for added versatility.

BM2301 *Men's Pique Polo*

- 5.3 oz., 60% cotton/40% poly
- self-fabric collar
- left chest pocket

Sizes: XXS - 3XL

MSRP \$49.85



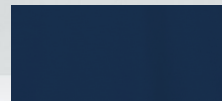
Black
BLK



Indigo
IND



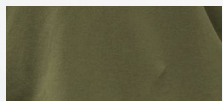
Mandarin
815



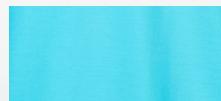
Navy
400



Oxford Heather
OXH



Olive
OLV



Pacific Blue
460



Paradise
643



Saltwater
SWT



White
WHT





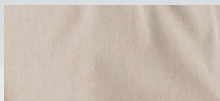
Swim trunks or workout short? Now you don't have to make the choice. Our Riptide Hybrid Short has you covered either way. The lightweight poly-spandex woven shell offers comfortable stretch, with a self waistband with center elastic and inner drawcord for adjustability. Front slash pockets with mesh pocket bag and zippered back pocket.

BM6101 *Riptide Hybrid Short*

- 5.1 oz., Woven outer shell: 95% polyester, 5% spandex
- Lining: 92% poly, 8% spandex; Pocket bag: 100% poly mesh
- self-waistband with center elastic
- braided flat interior drawcord

Sizes: XXS - 3XL

MSRP \$48.85



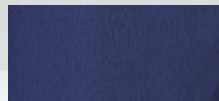
Latte
280



Light Grey
LGR



Mandarin
815



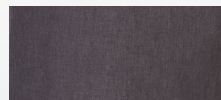
Navy
NAV



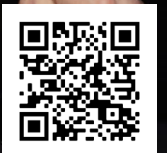
Pacific Blue
460



Paradise
643



Slate
SLT



Men's Layers Collection

“In wisdom gathered
over time I have found
that every experience is
a form of exploration.”

- Ansel Adams

BOXERCRAFT
your life. your spirit.™





Keep your fleece game going strong with our Fleece Crew pullover that's the perfect mix of casual comfort and warmth. The cotton/poly blend is both sporty and easy to care for, with a folded rib neck band, cuffs and bottom. It is accented with a rib triangle detailing and forward-set shoulder seam.

BM5101 Men's Crewneck Fleece

- 7 oz., 58% cotton, 42% polyester
- seamed rib collar with oxford rib on interior
- ribbed triangle detailing on neck

Sizes: XXS - 3XL

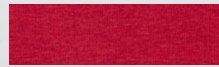
MSRP \$42.85



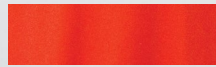
Amber Gold
708



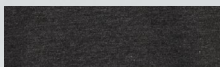
Black
001



Brick Red
650



Burnt Orange
850



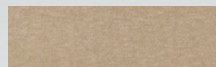
Charcoal Heather
091



Collegiate Blue
458



Dark Green
316



Latte
280



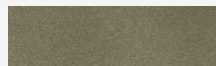
Mandarin
815



Maroon
610



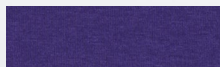
Navy
400



Olive
310



Oxford Heather
078



Purple
505



Saltwater
461



Shamrock
320



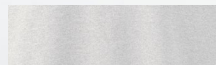
True Red
660



True Royal
425



White
100



White Heather
105





Add this cold-weather essential to your everyday lineup and be ready for anything. Our Fleece Hoodie is made from an ultra comfortable and versatile cotton-poly blend, and features a 2-ply hood with drawcords. Folded rib cuffs and bottom opening hold their shape. Kanga pocket keeps hands toasty.

BM5302 Men's Fleece Hood

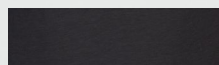
- 7 oz., 58% cotton, 42% polyester
- 2-ply hood with self lining
- kanga pocket

Sizes: XXS - 3XL

MSRP \$48.85



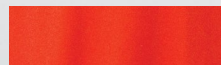
Amber Gold
708



Black
001



Brick Red
650



Burnt Orange
850



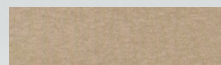
Charcoal Heather
091



Collegiate Blue
458



Dark Green
316



Latte
280



Mandarin
815



Maroon
610



Mystic
510



Navy
400



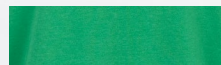
Olive
310



Oxford Heather
078



Purple
505



Shamrock
320



Saltwater
461



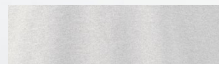
True Red
660



True Royal
425



White
100



White Heather
105





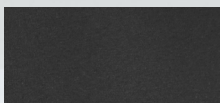
Meet your new favorite Fleece Jogger! So soft, so comfortable and completely ready for lazy days on the couch or active days outdoors. The folded waistband design has decorative topstitching and drawcords for adjustability. Side-seam front pockets and a back zippered pocket provide plenty of storage for essentials. Folded cuffs at the leg openings complete the look.

BM6602 *Men's Fleece Jogger*

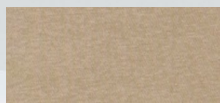
- 7 oz., 58% cotton, 42% polyester
- folded waistband construction with decorative topstitching
- self drawcord and on-seam pockets with self pocket bags

Sizes: XXS - 3XL

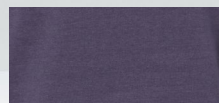
MSRP \$42.85



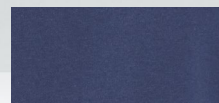
Black
001



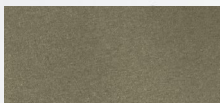
Latte
280



Mystic
510



Navy
400



Olive
310



Oxford Heather
078



Royal
425





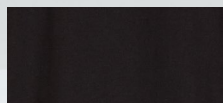
Add some flex to your fleece game with this ultra-soft and versatile Alumni Quarter-Zip Pullover. The cotton-poly blend fabric is warm, sporty and easy care, with a self-fabric quarter-zip collar and bottom zipper garage. Solid color 1x1 rib knit cuffs and bottom band hold their shape throughout the day.

BM5205 *Men's Alumni Quarter Zip Pullover*

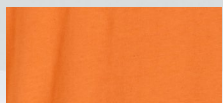
- 5.6 oz., 60% cotton, 40% poly jersey
- quarter-zip mock neck collar
- 1x1 rib knit cuffs and bottom band

Sizes: XXS - 3XL

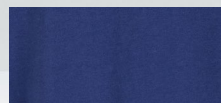
MSRP \$44.85



Black
001



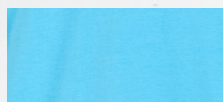
Mandarin
815



Navy
400



Oxford Heather
078



Pacific Blue
460



True Red
660



True Royal
425





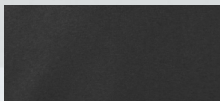
Who's ready for some cool outdoor adventures? With this Quarter-Zip Fleece Pullover, you will be! The warm cotton, poly blend and casual fleece styling makes this an ideal layering piece. With seamed rib collar and side panels, and folded rib cuffs and bottom band. It also sports contrast piping on the zipper placket.

BM5202 *Men's Quarter Zip Fleece Pullover*

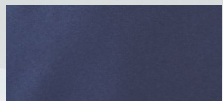
- 7 oz., 58% cotton, 42% polyester
- piping detail at CF zipper opening
- seamed rib side panels

Sizes: XXS - 3XL

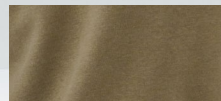
MSRP \$54.85



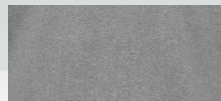
Black
001



Navy
400



Olive
310



Oxford Heather
078



Royal
425





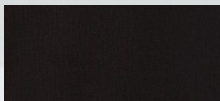
The simple design of our Sullivan Quarter-Zip Pullover only adds to its versatility. You'll love the soft feel and the go-with-anything style. With a self-fabric zipper placket and a faux leather zipper pull. A quilted back yoke and shoulder adds durability. 1x1 folded rib knit cuffs retain their shape. Side vents give a little extra breathing room.

BM5201 *Men's Sullivan Quarter Zip Pullover*

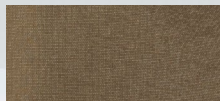
- 10.6 oz., 100% poly
- self-fabric front zipper placket
- quilted back yoke and shoulder

Sizes: XXS - 3XL

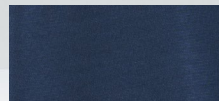
MSRP \$69.85



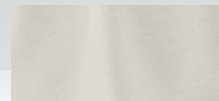
Black
BLK



Green Heather
HWZ



Indigo
IND



Natural Heather
NAH



Oxford Heather
OXH





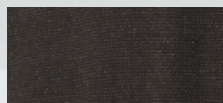
Stay in tune with your casual vibe with the Baja Fleece Pullover. Soft poly fleece has a self-placket that is seamed on top with raw edges for a more natural look. With flat, natural braided drawcords and a 1-ply, 2-piece hood. Back neck tape adds durability, and the kanga pocket keeps hands warm. Side vents add a bit of flexibility.

BM5301 *Fleece Baja Pullover*

- 10.6 oz., 100% poly
- self-placket with top seaming
- kanga pocket

Sizes: XS - 3XL

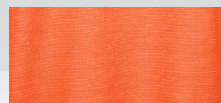
MSRP \$64.85



Black/Charcoal Htr
BCH



Indigo Heather
INH



Mandarin Heather
816



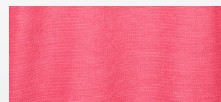
Natural Heather
NAH



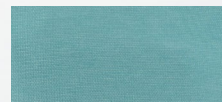
Oxford Heather
OXH



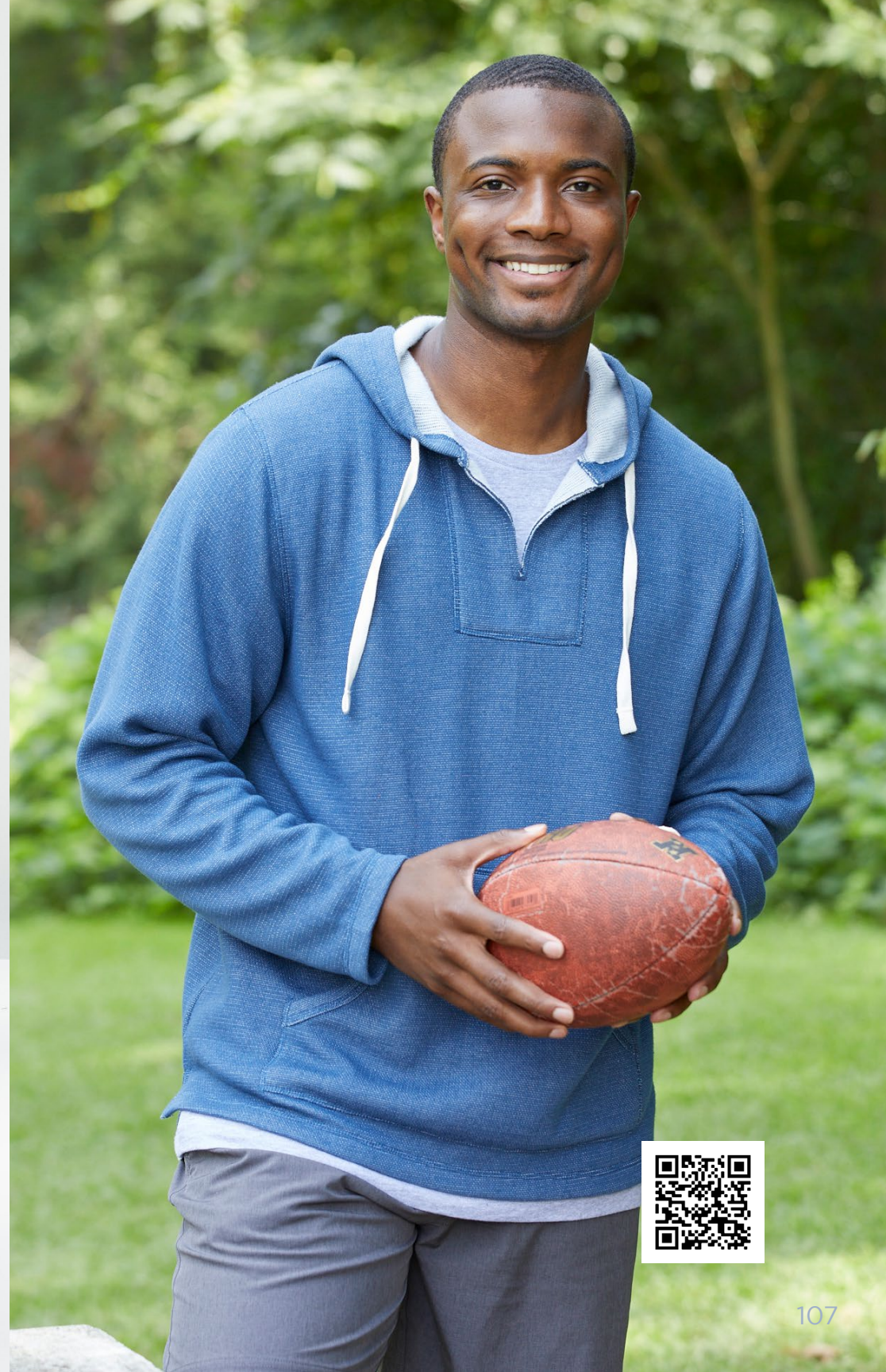
Pacific Blue Heather
459



Paradise Heather
644



Saltwater Heather
SWH





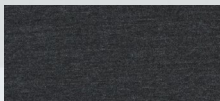
Made of ultra-soft French terry, this crewneck pullover is essential for fall layering. The ribbed collar, cuffs and waistband ensure it keeps its shape wear after wear. The V-notch at the neck and contrast stitching add visual interest to this versatile fall favorite.

BM5104 *French Terry Crew*

- 8.3 oz., 70% cotton, 30% poly French terry
- 2 x 2 rib v-notch collar, cuffs and bottom band
- raglan armhole seams with contrast stitching
- self-fabric back locker patch
- BXC logo woven label at left seam

Sizes: XXS - 3XL

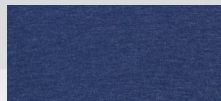
MSRP \$48.85



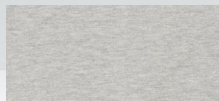
Charcoal Heather
091



Natural Heather
103



Navy Heather
401



Oxford Heather
078

NEW



NEW



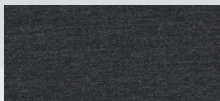
The temperature is lower, but you're about to raise your warmth game. This soft, double-sided knit fleece has a button placket closure for added visual appeal. The ribbed cuffs and waistband add to the look and keep it in shape. You'll reach for this one over and over again.

BM5209 *French Terry Button Pullover*

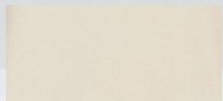
- 10.6 oz., 70% cotton, 30% poly French terry
- button placket front closure
- 2 x 2 rib cuffs and bottom band
- cover seaming on collar seam
- BXC logo woven wrap label at wearers side seam

Sizes: XXS - 3XL

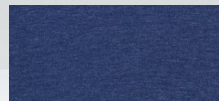
MSRP \$48.85



Charcoal Heather
091



Natural Heather
103



Navy Heather
401



Oxford Heather
078



NEW



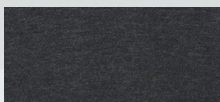
You can never have too many hoodies, but this one will quickly become the MVP (most valuable pullover). The softness of French terry with a self-fabric hood feels warm and comfortable, while the V-notch at the neck and self-fabric drawcords just look cool. The ribbed cuffs and waistband mean your new favorite hoodie will hold its shape over time.

BM5303 *French Terry Hoodie*

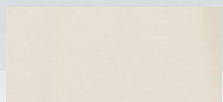
- 8.3 oz., 70% cotton, 30% poly French terry
- self-fabric hood, drawcords & v-notch at Center Front
- 2 x 2 rib cuffs and bottom band
- BXC woven logo label at wearers left side seam

Sizes: XXS - 3XL

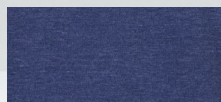
MSRP \$54.85



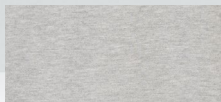
Charcoal Heather
091



Natural Heather
103



Navy Heather
401



Oxford Heather
078





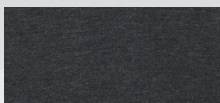
You'll want to live in these pants. Soft French terry comfort with a self-fabric elastic waistband and a really cool flat twill drawcord. Welt side and back pockets keep everything close, and front faux fly stitch details add to the look.

BM6603 *French Terry Pant*

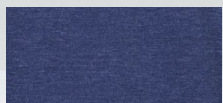
- 8.3 oz., 70% cotton, 30% poly French terry
- self-fabric elastic waistband
- flat twill drawcord; natural on all colors
- 5/8" welt side entry and back pockets
- front faux fly stitch details
- BXC woven logo label at wearers left side seam

Sizes: XXS - 3XL

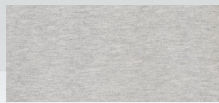
MSRP \$44.85



Charcoal Heather
091



Navy Heather
401



Oxford Heather
078



NEW



Warmth Level: Expert. It's time to level up and beat the chill with this double-knit Alpine fleece pullover. A versatile, quarter-zip style that sports a self-fabric collar, cuffs, and waistband plus contrast cover seams for added appeal.

BM5207 *Men's Alpine Fleece Quarter Zip*

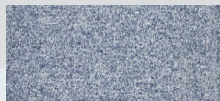
- 7 oz., 100% polyester double knit fleece
- self-fabric collar, self-fabric cuffs and bottom band
- forward shoulder seams
- concealed zipper placket
- contrast cover seaming

Sizes: XXS - 3XL

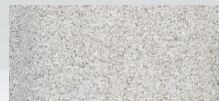
MSRP \$64.85



Black Heather
010



Navy Heather
401



Oxford Heather
078





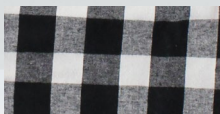
This work shirt works for you! The soft feel of flannel with the warmth of Everest fleece lining the body, where you need it the most. It's so easy to throw on and off, and the oversized fit is perfect for layering. Chest pockets and front side-seam pockets will keep all of your belongings within reach.

BM7601 *Men's Flannel Sherpa Workshirt*

- Outer: 100% cotton flannel
- Lining: 100% poly sherpa everest
- lined front and back main body with Everest fleece
- front chest pockets; front side seam pockets
- snap button closures

Sizes: XXS - 3XL

MSRP \$78.85



Red White
Buffalo Check
BWF



Gordon
Plaid
H01



Red Black
Buffalo Check
RBB



Scottish
Tartan
STP





Men's Outerwear Collection

“If happiness is the goal
– and it should be, then
adventures should be
top priority.”

– **Richard Branson**

BOXERCRAFT
your life. your spirit.™



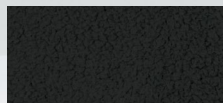
Comfortable, soft men's jacket that can handle a little cold while keeping you relaxed.

BM8102 Men's Peak Jacket

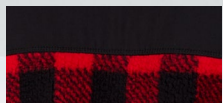
- 8.4 oz., 100% poly-body everest fleece
- 100% woven poly-front and back yoke
- woven fabric blocked full zip jacket
- contrast woven bindings at sleeve cuff, collar, and pocket openings
- side entry pockets; two-way center front zipper
- stand-up collar

Sizes: XXS - 3XL

MSRP \$68.85



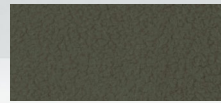
Black
001



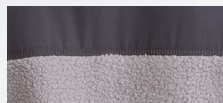
Buffalo Red/Black
RBB



Navy
400



Olive
310



Oxford/Charcoal
908





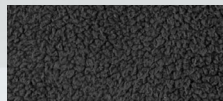
Our quarter-zip Everest Fleece Pullover is both warm and stylish, making it your new cold-weather best friend. The poly sherpa body has faux leather trim at the zipper and a kanga pocket that keeps hands toasty.

BM8510 *Men's Everest Fleece Pullover*

- 8.4 oz., 100% Everest fleece
- matte bindings and a decorative zipper pull for standout style
- kanga pocket

Sizes: XXS - 3XL

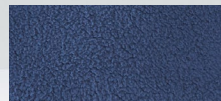
MSRP \$58.85



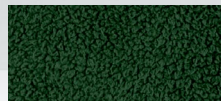
Black/Chocolate
001



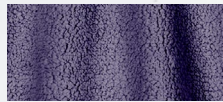
Espresso/Black
210



Indigo/Chocolate
430



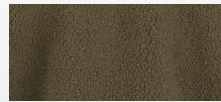
Moss/Black
313



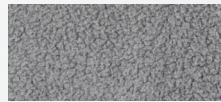
Mystic/Black
510



Natural/Chocolate
103



Olive/Chocolate
310



Oxford/Charcoal
007





The name says it all. Our Adventure Jacket is ready to take on the day while offering lightweight warmth and protection. It has a quilted poly shell with woven arms for stretchable comfort and flexibility. Features a self zipper guard and a zippered chest pocket. Side-seam pockets have lightweight pocket bags.

BM8101 *Adventure Jacket*

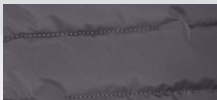
- body: 1.5 oz., 100% poly
- woven sleeves: 11.2 oz., 68% rayon, 28% chinlon, 4% spandex
- fill: 3 oz., 100% poly
- self zipper guard
- zippered chest pocket

Sizes: XXS - 3XL

MSRP \$88.85



Navy
NAV



Slate
SLT



Men's Active Collection

“Our bodies are our
gardens – our wills are
our gardeners.”
- **William Shakespeare**

BOXERCRAFT
your life. your spirit.





Made for style and function, our Stretch Woven Vest adds a layered style to your look or a touch of warmth to your core, where you need it the most. The contrast self-fabric inner-collar lining adds visual interest, plus you'll find plenty of places to stash your stuff: a hidden right chest pocket, front welt pockets with mesh pocket bags, and mesh pocket bags sewn into the bottom hem.

BM5502 Men's Stretch Woven Vest

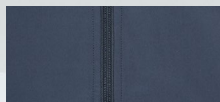
- 3.39 oz., 90% poly, 10% elastane
- self-fabric inner-collar lining in contrasting color
- hidden right chest pocket and front welt pockets

Sizes: XXS - 3XL

MSRP \$48.85



Black
001



Castlerock
085



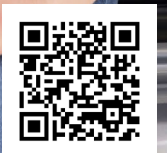
Indigo
430



Mystic
510



Oxford
007





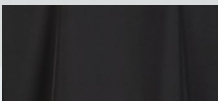
Our Stretch Woven Quarter-Zip Pullover is the perfect choice for layering over turtlenecks or tees, under a jacket, or simply wear it alone. The stretch weave fabric adds flexibility for movement and comfort. A self-fabric stand-up collar, zipper guard and sleeve cuffs give it a streamlined look. Two front side-seam pockets for storage and a drawcord at the waist for adjustability.

BM5206 *Men's Stretch Woven Quarter Zip Pullover*

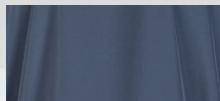
- 3.39 oz., 90% poly, 10% elastane
- self-fabric stand-up collar
- two front side-seam pockets for storage

Sizes: XXS - 3XL

MSRP \$54.85



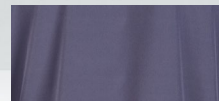
Black
001



Castlerock
085



Indigo
430



Mystic
510



Oxford
007





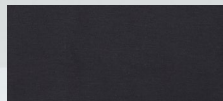
In search of a perfectly comfortable, lightweight layer? The Flex Quarter-Zip Pullover has you covered! Soft and stretchy rayon-poly-spandex fabric is great for your active lifestyle, or for simply lounging. It's designed with a self-fabric standup collar and self-fabric sleeve, shoulder and back yoke panels. The straight bottom hem looks great worn out over your favorite fleece or denim bottoms. Contrasting heather grey neck tape completes the look.

BM5203 *Men's Flex Quarter Zip Pullover*

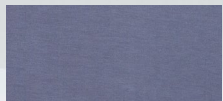
- 6.8 oz., 70% rayon, 26% poly, 4% spandex
- self-fabric mock neck collar
- self-fabric sleeve, shoulder and back yoke panels

Sizes: XXS - 3XL

MSRP \$54.85



Black
001



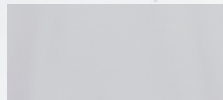
Castlerock
085



Navy/Oxford/White
973



Oxford/Black/Charcoal
975



White
100





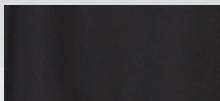
Get serious about your workouts or your chill outs with this go-everywhere Tech Pant. You'll love the comfort of the self-elastic waist and inner elastic exposed-logo waistband. Straight-leg styling and a great-looking self-fabric side panel complete the look. Handy side pockets to keep your phone and necessities nearby.

BM6201 *Men's Stretch Woven Pant*

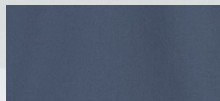
- 3.39 oz., 90% poly, 10% elastane
- self-elastic waist with exposed logo waistband
- straight-leg styling with side pockets
- hidden drawcord encased in hem with bungee cord lock

Sizes: XXS - 2XL

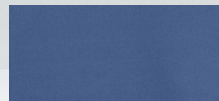
MSRP \$48.85



Black
001



Castlerock
085



Indigo
430





Recrafted™ Collection

“You cannot get through a single day without having an impact on the world around you. What you do makes a difference and you have to decide what kind of a difference you want to make.”

- Jane Goodall

RECRRAFTED

by Boxercraft.



Scan the QR code to learn more about the **RECRRAFTED™** by Boxercraft® story.



RECRRAFTED
by Boxercraft.

Relax in a tee that is both ultra comfortable and sustainable. Our Recrafted collection combines upcycled cotton with recycled poly, making a conscious style statement. The tee has vintage heathered look and an extremely soft feel. It's finished with ribbed neck trim and self-fabric turned back sleeve and bottom hems. Loose fit.

EM2180 *Men's Recrafted Crewneck Tee*

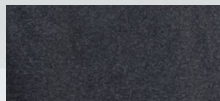
- 4.4 oz., 100% post consumer recycled materials;
50% post consumer cotton, 50% post consumer plastic
- ribbed neck trim
- self-fabric turned-back sleeve and bottom hems

Sizes: XS - 2XL

MSRP \$29.85



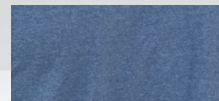
Aluminum
050



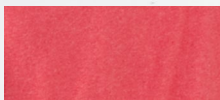
Black Heather
010



Cobalt Blue
445



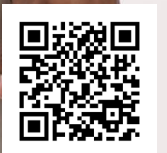
Navy
400



Recover Red
665



White
100





RECR^oFTED

by Boxercraft.

Do something comfortable for yourself, and do something smart for the environment. Our Recrafted crewneck tee is made from a blend of upcycled cotton and post-consumer poly. It feel super soft to the touch, and it's sustainable, too. Fabric has a heathered look that looks and feels terrific from day one. Ribbed neck trim and self-fabric turned back sleeve and bottom hems. Relaxed shape fit.

EW2180 *Women's Recrafted Crewneck Tee*

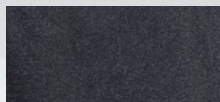
- 4.4 oz., 100% post consumer recycled materials; 50% post consumer cotton, 50% post consumer plastic
- ribbed neck trim
- self-fabric turned-back sleeve and bottom hems

Sizes: XXS - 2XL

MSRP \$29.85



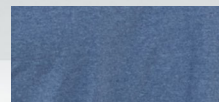
Aluminum
050



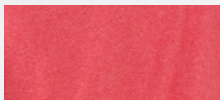
Black Heather
010



Cobalt Blue
445



Navy
400



Recover Red
665



White
100





RECR^oFTED

by Boxercraft.



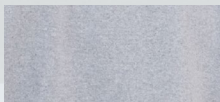
Make your fleece game more meaningful than ever. Our recycled fleece crew pullover is completely comfortable and eco-friendly. It's part of our socially-responsible collection that is made of upcycled cotton and post-consumer poly. The fabric has a heathered look with a soft hand. Self-fabric shoulder and side inset panels. With ribbed collar cuffs and waistband, and a ribbed V-notch inset at the neck. Standard relaxed fit.

EM5160 *Men's Recrafted Crew Fleece*

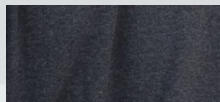
- 8 oz., 50% upcycled cotton, 50% post-consumer poly
- ribbed V-notch inset at neck front
- ribbed collar, cuffs and waistband

Sizes: XS - 2XL

MSRP \$52.85



Aluminum
050



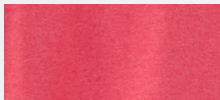
Black Heather
010



Cobalt Blue
445



Navy
400



Recover Red
665



White
100





RECRRAFTED
by Boxercraft.

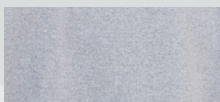
We've taken a comfort favorite, the hoodie, and given it new meaning with our Recrafted Fleece. As a part of our eco-friendly collection, these are items made from a blend of upcycled cotton and post-consumer poly. The end result feels soft and cozy, while being environmentally conscious. Designed with a self-fabric hood with drawcords, a Kanga front pocket and ribbed cuffs and waistband. Standard relaxed fit.

EM5370 *Men's Recrafted Fleece Hoodie*

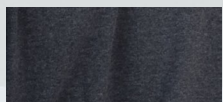
- 8 oz., 50% upcycled cotton, 50% post-consumer poly
- self-fabric hood with drawcords
- kanga front pocket

Sizes: XS - 2XL

MSRP \$59.85



Aluminum
050



Black Heather
010



Cobalt Blue
445



Navy
400



Recover Red
665



White
100



BXC Blankets Collection

“We need much less
than we think we need.”
- **Maya Angelou**

BOXERCRAFT[®]
your life. your spirit.™





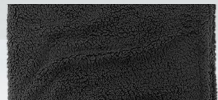
Our Sherpa blanket takes coziness to the next level. We don't mess around. Featuring double-faced Sherpa on one side and ultra-plush microfleece on the other, keep this standard size throw blanket at the ready whenever cold weather strikes. Designed with finished edges and a convenient zipper pocket to conceal embroidered backing.

Q21 *Sherpa Blanket*

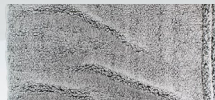
- 7.4 oz., 100% poly double-faced Sherpa
- machine wash cold, tumble dry low
- the dye process used to produce this blanket infuses each one with unique character; please allow for color variation in production

Size: 50 x 60-inch standard size throw blanket

MSRP \$38.85



Charcoal
CHA



Frosty Grey
FGR



Navy
NAV



You don't have to go to Mount Everest to appreciate the warmth of this flannel and Sherpa blanket, but you could. More practical purposes include snuggling on the couch or staying cozy by a campfire. This standard size throw blanket is easy to love in brushed cotton flannel with a plush Sherpa fleece backing for soft warmth without feeling heavy. There's even a zippered corner to conceal embroidery backing. When chilly weather strikes, make sure your new favorite blanket is handy.

FQ01 *Everest Blanket*

- 4.3 oz., 100% brushed cotton flannel; 5.9 oz., 100% poly Sherpa back
- self-flannel binding with double-needle coverstitching
- machine wash cold; tumble dry low

Size: 50 x 58-inch throw blanket

MSRP \$48.85



Blackwatch
Plaid
BPD



Black White
Buffalo Check
BWN



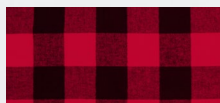
Charcoal Black
Buffalo Check
CBN



Royal
Field Day
FD3



Crimson
Field Day
FD5



Red Black
Buffalo Check
RBN



Remember that blanket you had to have as a kid? Maybe it's still around, or frayed remnants. Meet your new favorite. This go-everywhere plaid blanket is easy to love in double-brushed cotton flannel with a plush fleece backing for soft warmth without feeling heavy. Snuggle on the couch. Stay warm in a cold outdoor stadium. Stretch out and stargaze. If you spill your drink (oops, it happens), just throw this flannel blanket in the washing machine and tumble dry. With bounded edges and rounded corners, it will come out looking and feeling like new.

FB250 Premium Flannel Blanket

- 4.3 oz. double-brushed, all-cotton flannel
- backed by 7 oz. fleece of 50% cotton, 50% poly
- bound and finished edges

Size: 50 x 60-inch standard size throw blanket

MSRP \$42.85



Black Gold
Plaid
BGO



Black White
Plaid
BWB



Garnet Black
Plaid
GBB



Green White
Plaid
GPB



Navy Columbia
Plaid
NCN



Navy Gold
Plaid
NGV



Navy Red
Plaid
NRN



Navy Silver
Plaid
NSP



Purple White
Plaid
PWB



Red White
Plaid
RWB



CUSTOM CRAFTED

Sublimation printing uses heat to essentially bring ink and fabric together as one. First, a design is printed onto special paper. The inks that are used turn into gas when brought under heat, then combine with the fabric and permanently print onto the fabric. The effects are permanent and less prone to fading, as the ink is embedded in the fabric or substrate rather than simply laying on top like a normal print and won't crack, peel or wash away from the substrate.



MEN'S/UNISEX STYLES



MEN'S SUBLIMATED CLASSIC CREW TEE
BMS203 | XS - XXL
MSRP \$34.85



MEN'S SUBLIMATED TECH TEE
BMS292 | XS - XXL
MSRP \$34.85



MEN'S SUBLIMATED LONG SLEEVE TEE
BMS311 | XS - XXL
MSRP \$38.85



MEN'S SUBLIMATED PRACTICE TEE
BMS206 | S - XXXL
MSRP \$49.85



MEN'S SUBLIMATED CABANA SHIRT
BMS7101 | S - XXXL
MSRP \$58.85



MEN'S HARLEY SUBLIMATED PANT
BMS624 | XXS - XXXL
MSRP \$44.85



ADULT SUBLIMATED PANT
SB20 | XXS - XXXL
MSRP \$44.85



YOUTH SUBLIMATED PANT
BYS624 | YS - YXL
MSRP \$38.85



MEN'S SUBLIMATED BOXER
BMS648 | S - XXL
MSRP \$32.85



SUBLIMATED BUCKET HAT
BUS920 | S/M & L/XL
MSRP \$34.85

YOUTH STYLES



YOUTH SUBLIMATED CREW TEE
BYS292 | YS, YM, YL
MSRP \$32.85



YOUTH SUBLIMATED PRACTICE TEE
BYS206 | YS, YM, YL
MSRP \$44.85

WOMEN'S STYLES



WOMEN'S SUBLIMATED V-NECK TEE
BWS220 | XS - XXL
MSRP \$34.85



WOMEN'S SUBLIMATED POM POM JERSEY
BWS314 | XXS - XXL
MSRP \$44.85



WOMEN'S CROPPED SUBLIMATED TEE
BWS204 | XXS - XXL
MSRP \$34.85



WOMEN'S SUBLIMATED TANK DRESS
BWS410 | XS - XXL
MSRP \$38.85



WOMEN'S HALEY SUBLIMATED PANT
BWS620 | XXS - XXL
MSRP \$44.85



WOMEN'S SUBLIMATED LEGGING
BWS632 | XXS - XXL
MSRP \$44.85

WHY CUSTOM CRAFTED?

- All over printing
- Garments retain smooth hand feel
- Color longevity is higher than other printing methods
- 60 piece minimums



DTG

New advances in technology have made it possible to print Direct to Garment (DTG). DTG utilizes a specialized printer allowing an image to be printed directly onto a garment. Since this is a digital process the print is sharper and has a higher resolution than traditional printing methods such as screen printing. However, unlike screen printing, there is no long setup or clean-up process, and DTG has the ability to print lower quantities for minimal cost. Inks are completely safe and dries quickly. The ink will soak into your garment itself and become part of the shirt. That means there's no chance for the graphic to crack, peel, or wash away over time.

SHIRTS MUST CONTAIN AT LEAST 60% COTTON CONTENT FOR DTG PRINTING



WHY CHOOSE DTG?

- Excellent color reproduction
- Ease of printing detailed colors on dark garments
- Eco-friendly water based inks
- 24 piece minimums

FUSION

Fusion Heat Transfer is Boxercraft's newest embellishment technique. Fusion mimics the look and feel of traditional twill applique. No sewing required! This heat transfer technique provides excellent durability and last just as long as screen printed or embroidered decorations.

RECOMMENDED FOR FLEECE HOOD AND CREW



WHY CHOOSE FUSION?

- Offers softer more flexible feel
- Easy reorder process
- Eight templates available
- 72 pc minimums/8 wk turnaround time
- Durable and long lasting

HEAT TRANSFER

With heat transfer, also known as digital transfer, your custom logo or design is printed onto transfer paper and then ink is thermally transferred from the paper to your fabric using heat and pressure.

FAUX LEATHER PATCH

Laser-etched patches available in a variety of color options with the same consistent, even finish you get with real leather.

Products: Sherpa, Everest, Fleece

Colors: Sandstone/Black, Chocolate/Black, Black/Silver

CAD-CUT PREMIUM PLUS (Soft Feel Vinyl)

Soft hand, high stretch, and matte finish. Popular choice for everyday decoration.

*No small details (trademarks) for small sized graphics.

Products: Most products

Colors: 2 Color Max (limited colors)

CAD-CUT SILICONE DYE-BLOCK (Raised Vinyl)

Rubber-like material that blocks dye migration on heat-sensitive performance fabrics.

*No small details (trademarks) for small sized graphics.

Products: Polyester, Performance Fabrics

Colors: 2 Color Max (limited colors)

CAD-CUT SOFT FLOCK (Premium Vinyl)

Soft and vibrant suede-like vinyl. *No small details (trademarks) for small sized graphics.

Products: Most products

Colors: 2 Color Max (limited colors)

CAD-CUT PREMIUM SUBLIMATED VINYL

Choose from a variety of trendy, customizable printed patterns.

*No small details (trademarks) for small sized graphics.

Products: Most products

Colors: Pattern limited

ULTRACOLOR MAX (Full Color Heat Transfers)

Achieve unlimited colors, extremely fine detail, and an amazing soft feel.

Products: Most products except 10% polyester and poly/spandex

Colors: Unlimited



*Ultracolor Max

SCREENPRINTING

Our traditional screen print techniques offer you the best in high quality prints. We also offer a variety of specialty inks and embellishments to accessorize any design and create the perfect combination.

CLEAR INK

Transparent ink that gives a “wet” look to certain garments. Achieve different tonal colors with same ink, based on garment color.

Products: Cuddle Soft, Dream Fleece, Pom Pom

Colors: Clear

CRYSTALINA (Glitter)

Large sized glitter flakes printed over a design as a separate screen to achieve a more traditional glitter effect. Small details and lettering should be avoided.

Products: Most products

Colors: Any PMS color

HAZE

Clear ink with 10% White ink.

Products: Most products

Colors: Haze

LIQUID METALLIC

Metallic effect with small sized flakes. This creates a “foil” look without being true glitter.

Products: Most products

Colors: Silver and Gold

PUFF INK

Ink that when exposed to the curing process will raise off the garment. Not to be used on smaller logos or logos with intricate detail that may “fill in” during puff activation.

Products: Most products

Colors: Any PMS color

SHIMMER

Metallic ink with medium sized flakes.

Products: Most products

Colors: Silver and Gold

SMOKE

Clear Ink with 10% Black ink.

Products: Most products; recommended for dark garments

Colors: Smoke



*Clear ink

SIZING GUIDE

Pants, Shorts & Tops Have A +/- 1/2" Tolerance

WOMEN'S FLANNEL FIT - BW6620

SIZES	WAIST RELAXED	FRONT RISE	BACK RISE	INSEAM
XXS	25"	10 1/4"	14 3/4"	26 1/4"
XS	26"	10 3/4"	15 1/4"	28 3/4"
S	28"	11 1/4"	15 3/4"	29 1/4"
M	30"	11 3/4"	16 1/4"	29 3/4"
L	33"	12 1/4"	16 3/4"	30 1/4"
XL	36 1/2"	12 3/4"	17 1/4"	30 3/4"
2X	38"	13 1/4"	17 3/4"	31 1/4"



CHEST
Measure at fullest point

WAIST
Relaxed

INSEAM
Inner leg length is measured from the top of the inside leg down to the bottom edge of inside leg



MEN'S FLANNEL FIT - BM6624

SIZES	WAIST RELAXED	FRONT RISE	BACK RISE	INSEAM
XXS	26"	12 3/4"	15 1/4"	28 1/4"
XS	28"	13 1/4"	16"	28 3/4"
S	30"	13 3/4"	16 1/2"	29 1/4"
M	31"	14 1/4"	17"	29 3/4"
L	33"	14 3/4"	17 1/2"	30 1/4"
XL	36"	15 1/4"	18"	30 3/4"
2X	38"	15 3/4"	18 1/2"	31 1/4"
3X	40"	16 1/4"	19"	31 3/4"

WOMEN'S - TOPS

SIZES	BUST
XXS (00)	27.5" - 29.5"
XS (0-2)	29.5" - 32.5"
S (4-6)	32.5" - 35.5"
M (8-10)	35.5" - 38"
L (12-14)	38" - 40.5"
XL (16)	40.5" - 43"
2X (18)	43" - 45.5"
3X (20)	45.5" - 47"

WOMEN'S - BOTTOMS

SIZES	WAIST	HIPS	INSEAM
XXS (00)	24" - 25.5"	31.5" - 33"	28" - 29"
XS (0-2)	25.5" - 26.5"	33" - 35.5"	29" - 30"
S (4-6)	26.5" - 29"	35.5" - 37.5"	30" - 31"
M (8-10)	29" - 31.5"	37.5" - 39.5"	31" - 32"
L (12-14)	31.5" - 34.5"	39.5" - 41.5"	32" - 33"
XL (16)	34.5" - 38.5"	44" - 46"	33" - 34"
2X (18)	38.5" - 42.5"	46" - 49"	34" - 35"
3X (20)	42.5" - 46"	49" - 52"	35" - 36"

ADULT FLANNEL JOGGER FIT - BM6625

SIZES	WAIST WIDTH EXT.	FRONT RISE	BACK RISE	INSEAM
XXS	17"	11 1/2"	15 7/8"	32"
XS	18 1/2"	11 7/8"	16 1/4"	32"
S	19 1/2"	12 1/4"	16 5/8"	32"
M	20 1/2"	12 5/8"	17"	32"
L	21 1/2"	13"	17 3/8"	32"
XL	23 1/2"	13 3/8"	17 3/4"	32"
2X	25 1/2"	13 3/4"	18 1/8"	32"
3X	27 1/2"	14 1/8"	18 1/2"	32"

MEN'S/UNISEX - TOPS

SIZES	CHEST
XXS	29.5" - 32.5"
XS	32.5" - 34"
S	34" - 36"
M	38" - 40"
L	42" - 44"
XL	46" - 48"
2X	50" - 52"
3X	54" - 56"

MEN'S/UNISEX - BOTTOMS

SIZES	WAIST	HIPS	INSEAM
XXS	25" - 27"	-	28" - 29"
XS	27" - 29"	-	29" - 30"
S	29" - 31"	-	30" - 31"
M	31" - 32"	-	31" - 32"
L	33" - 34"	-	32" - 33"
XL	35" - 36"	-	33" - 34"
2X	37" - 38"	-	34" - 35"
3X	39" - 40"	-	36" - 37"

YOUTH FLANNEL FIT - BY6624

SIZES	WAIST RELAXED	FRONT RISE	THIGH WIDTH	INSEAM
YS (6-8)	11 1/4"	9 5/8"	11"	25"
YM (8-10)	12"	10"	11 1/2"	26 1/2"
YL (10-12)	12 3/4"	10 3/8"	12"	28"
YXL (14-16)	13 1/2"	10 3/4"	12 1/2"	29 1/2"

YOUTH - TOPS

SIZES	CHEST
YS (8-10)	25" - 27"
YM (10-12)	28" - 30"
YL (12-14)	31" - 33"

YOUTH - BOTTOMS

SIZES	WAIST	HIPS	INSEAM
S (8-10)	22" - 23"	-	21" - 23"
M (10-12)	24" - 25"	-	24" - 26"
L (12-14)	26" - 27"	-	26" - 27"



L001 / R001
L / R Chest
3" x 3"
S E H D F



F004
Front Center
12" x 12"
S D F



L057 / R057
Shoulder Sleeve
3" x 3" S H
2.75" x 2.75" E



L003
Pocket
3" x 3" S H
1.75" x 1.75" E



L055
Above Pocket
3" x 3"
S E H



L058
Left Corner Pocket
.75" x .75" E
*one color micro embroidery



L010 / R010
Lower Shirt Hem
3" x 3"
S E H



B013
Back Center
Men's: 12" x 12"
Women's: 9" x 9"
S D



B014
Upper Back Center
3" x 3"
S E H



F007
Upper Front
13" x 5"
S



F009
Lower Front
13" x 8"
S



B015
Upper Back
12" x 3"
S



B017
Lower Back
12" x 12"
S



B016
Oversized Upper Back
22" x 6"
S



L018 / R018
Full Sleeve
Men's: 3" x 12"
Women's: 3" x 10"
S E H



L019 / R019
Cuff
2.5" x 1" E
2.5" x 2.5" H



L037 / R037
Leg Hem
3" x 3"
S E H



F011
Front Waist Band
3" x 1.75"
H



B011
Back Waist Band
3" x 1.75"
H



F012
Front Bottom Band
3" x 0.75"
H



B012
Back Bottom Band
3" x 0.75"
H



F004
Front Center
3" x 2"
H



B013
Back Center
3" x 2"
H



L023 / R023
Hip
3.5" x 3.5" S
3" x 3" E H



L024 / R024
Thigh
4" x 4"
S



L025 / R025
Leg Front
4" x 18"
S



L033 / R033
Leg Side
4" x 18"
S



L038 / R038
Hem Front
4" x 18"
S



L038 / R038
Hem Side
4" x 18"
S



L048 / R048
Corner
5" x 5" S
3.5" x 3.5" E

Table of Contents



Women's Essentials 03

BW2502 Essential Racerback Tank.....	04
BW2505 Women's Twistback Tank	05
BW2507 Knot Front Tee.....	06
BW2508 Bamboo Hi/Low Tank.....	07
BW2105 Bamboo Hi/Low Tee.....	08
BW2201 Women's V-Neck Tee.....	09
BW2101 Women's Tri-Blend Tee.....	10
BW2104 Women's Essential Crew Tee	11
BW2404 Women's Carefree Tee.....	12
BW2405 Bella Crossback Tee	13
T67 Cut It Out Tee.....	14
BW2102 Women's Sweet Tee.....	15
BW2401 Willow Tee.....	16
BW3166 Solid Preppy Patch Tee.....	17
BW3514 Pom Pom Jersey.....	18
BW3515 Cropped Retro Jersey	19
BW2501 Adrienne Tank.....	20
BW2403 Baby Rib Top.....	21
BW2402 Harper Henley	22
BW4101 Coastal Cover Up.....	23
BW4102 Women's Caydn Tank Dress	24
BW4201 Women's Vivian Dress.....	25
T59 All Star Dress.....	26
BW6102 Women's Sport Short.....	27
K11 Rally Short.....	28
R65 Relay Short.....	29
BW6615 Evelyn Pant.....	30

Cuddle 31

BW1101 Cuddle Puff Sleeve Top	32
L06 Cuddle Boxy Crew	33
BW1102 Cuddle Oversized Crew	34
BW1301 Cuddle Soft Wrap Top.....	35
BW1501 Cuddle Hoodie.....	36
L12 Cuddle Cowl Pullover	37
L11 Cuddle Short.....	38

L09 Cuddle Jogger.....	39
L10 Cuddle Wide Leg Pant.....	40
L08 Cuddle Hooded Cardigan	41
BW1103 Cuddle Cardigan.....	42

Women's Layers 43

BW5301 Dream Fleece Pull Over Hood	44
BW5205 Dream Fleece Quarter Zip.....	45
BW5201 Dream Fleece Full Zip Hood	46
BW6601 Dream Fleece Pant.....	47
L04 Cozy Contrast Pullover.....	48
R08 Quilted Crew.....	49
V03 Women's Rally Lace-up Pullover.....	50
D02 Rally Corduroy Crew	51
BW5401 Women's Lace Up Pullover.....	52
BW5203 Women's Manchester Quarter Zip....	53
BW5402 Women's Travel V-Neck Pullover.....	54
BW6202 Women's Travel Crop Pant.....	55
BW5404 Women's Fleece Cropped Hood.....	56
BW6502 Women's Fleece Short	57
K01S Reverse Fleece Out Crew.....	58
K02S Reverse Fleece Out Short.....	59
BW3101 Harlow Oversized Terry Pullover	60
BW2407 Women's Sleeveless Terry Half Zip....	61
BW6503 Women's French Terry Safari Short.	62
BW5207 Women's Alpine Fleece Full Zip.....	63

Women's Outerwear 64

BW8501 Everest Half Zip.....	65
FZ01 Fuzzy Fleece Pullover	66
FZ03 Fuzzy Fleece Crew.....	67
FZ04 Remy Fuzzy Fleece Pullover.....	68
FZ06 Quilted Fuzzy Fleece Pullover.....	69
Q10 Sherpa Quarter Zip Pullover	70
Q12 Sherpa Full-Zip Jacket.....	71
BW8101 Women's Adventure Jacket	72
BW8102 Quilted Market Jacket.....	73

Women's Active 74

S101 Support Your Team Bra.....	75
BW2701 Sweetheart Sports Bra.....	76
BW6103 Stretch Woven Lined Short.....	77
S08 Love 'Em Longer Legging.....	78
BW6301 Luna Legging.....	79
BW6302 Adore Me Legging.....	80
BW6201 Women's Sport Jogger.....	81
BW5202 Women's Flex Quarter Zip.....	82
S89 Practice Jacket.....	83
S95 Studio Jacket.....	84

Flannel 85

BW6620 Women's Haley Flannel Pant.....	86
BM6624 Men's Harley Flannel Pant.....	87
BM6625 Adult Flannel Jogger.....	88
BY6624 Youth Poly Flannel Pant.....	89
BM6501 Women's Flannel Short.....	90
BM6701 Men's Flannel Short.....	91

Men's Essentials 92

BM2102 Men's Tri-Blend Tee.....	93
BM2103 Men's Crewneck Tee.....	94
BM2204 Men's High V-Tee.....	95
BU3102 Essential Long Sleeve Tee.....	96
BM3101 Men's Henley Long Sleeve.....	97
BM2301 Men's Pique Polo.....	98
BM6101 Riptide Hybrid Short.....	99

Men's Layers 100

BM5101 Men's Crewneck Fleece.....	101
BM5302 Men's Fleece Hood.....	102
BM6602 Men's Fleece Jogger.....	103
BM5205 Men's Alumni Quarter Zip Pullover.....	104
BM5202 Men's Quarter Zip Fleece Pullover.....	105
BM5201 Men's Sullivan Quarter Zip Pullover.....	106
BM5301 Fleece Baja Pullover.....	107
BM5104 French Terry Crew.....	108

BM5209 French Terry Button Pullover.....	109
BM5303 French Terry Hoodie.....	110
BM6603 French Terry Pant.....	111
BM5207 Men's Alpine Fleece Quarter Zip.....	112
BM7601 Men's Flannel Sherpa Workshirt.....	113

Men's Outerwear 114

BM8102 Men's Peak Jacket.....	115
BM8510 Men's Everest Fleece Pullover.....	116
BM8101 Adventure Jacket.....	117

Men's Active 118

BM5502 Men's Stretch Woven Vest.....	119
BM5206 Men's Stretch Woven Quarter Zip... <td>120</td>	120
BM5203 Men's Flex Quarter Zip Pullover.....	121
BM6201 Men's Stretch Woven Pant.....	122

Recrafted 123

EM2180 Men's Recrafted Crewneck Tee.....	124
EW2180 Women's Recrafted Crewneck Tee.....	125
EM5160 Men's Recrafted Crew Fleece.....	126
EM5370 Men's Recrafted Fleece Hoodie.....	127

Blankets 128

Q21 Sherpa Blanket.....	129
FQ01 Everest Blanket.....	130
FB250 Premium Flannel Blanket.....	131

Additional Information 132

Custom Crafted Garments.....	132-133
Direct To Garment Embellishment.....	134
Fusion Embellishment.....	134
Heat Transfer Embellishments.....	135
Special Screenprint Embellishments.....	135
Sizing Guide Measurements.....	136
Embellishment Locations.....	137





BOXERCRAFT
your life. your spirit.

Boxercraft.com